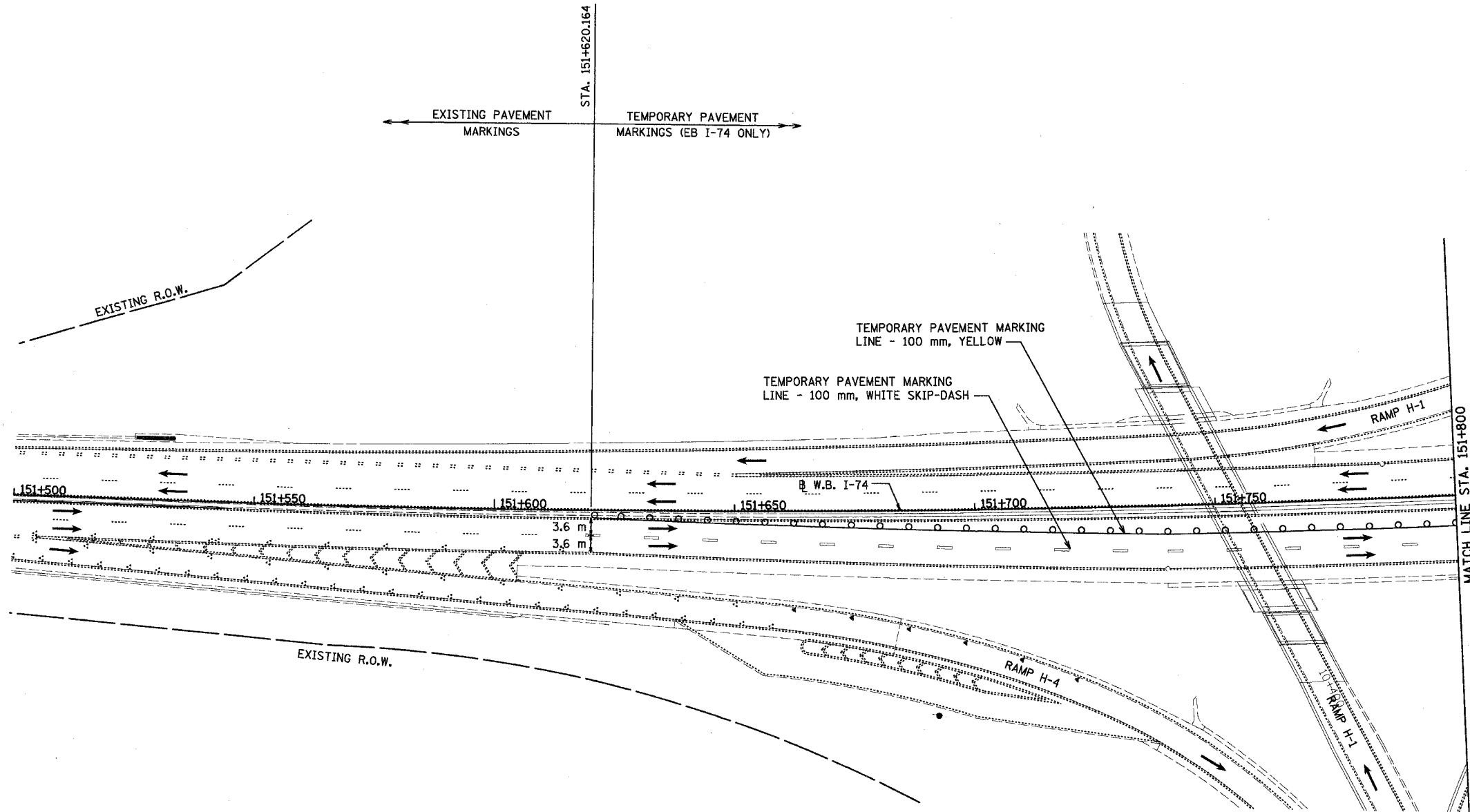
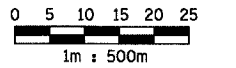


F.A.I. RTE.	SECTION	COUNTY	TOTAL SHEETS	SHEET NO.
74	(90-11R-2) 90(13,14,14-1)R-1	TAZEWELL	1366	146
STA. 151+500		TO STA. 151+800		
FED. ROAD DIST. NO. 4		ILLINOIS FED. AID PROJECT		



LEGEND	
	TEMPORARY PAVEMENT MARKING
	TRAFFIC FLOW DIRECTION
	DRUM WITH STEADY BURNING MONO-DIRECTIONAL LIGHT

NOTES: MAINLINE TRAFFIC CONTROL FOR I-74 SHALL BE IN ACCORDANCE WITH STANDARD 701101 AND 701406.

SEE MOT GENERAL NOTES SHEET FOR TEMPORARY SIGNING LEGEND.

THIS MAINTENANCE OF TRAFFIC PLAN SHOWS SPECIAL TRAFFIC CONTROL IN THIS AREA. IN ADDITION TO THE SPECIAL TRAFFIC CONTROL DETAILS SHOWN, IDOT TRAFFIC CONTROL HIGHWAY STANDARDS SHALL APPLY WHERE APPLICABLE AND AS DIRECTED BY THE ENGINEER. SEE TRAFFIC NOTES ON THE CONSTRUCTION SEQUENCING SHEET FOR STAGE 3A FOR APPLICABLE IDOT HIGHWAY STANDARDS.

REVISIONS	
NAME	DATE



ILLINOIS DEPARTMENT OF TRANSPORTATION
 F.A.I. ROUTE 74 (I-74)
 MAINTENANCE OF TRAFFIC
 STAGE 3A
 STA. 151+500 TO STA. 151+800 I-74.
 DRAWN BY KMO
 CHECKED BY RTG
 DATE 12/20/2004