

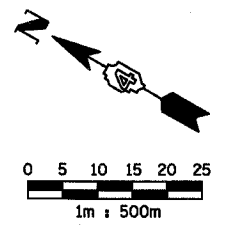
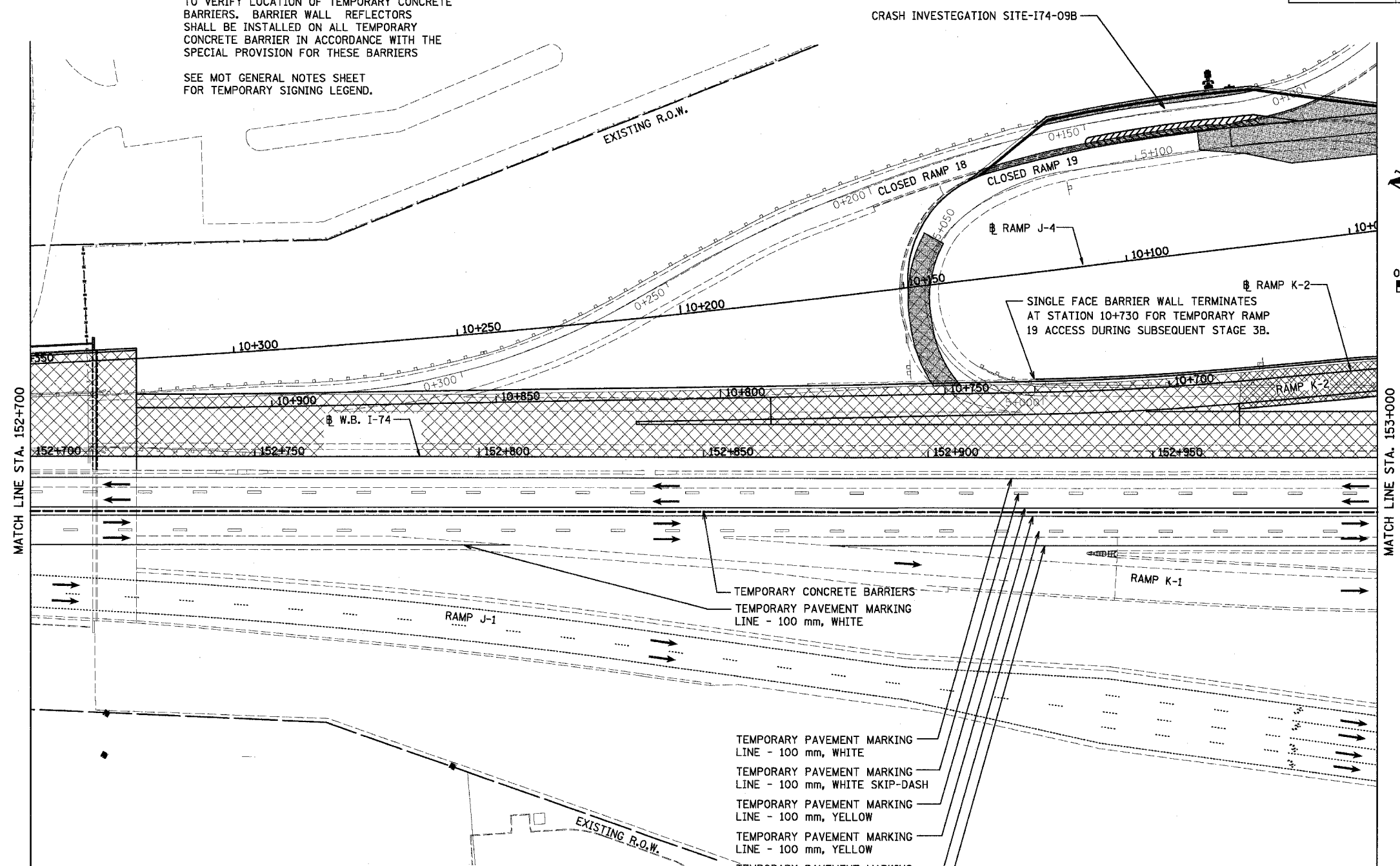
F.A.I. RTE.	SECTION	COUNTY	TOTAL SHEETS	SHEET NO.
74	(90-11R-2) 90(13,14,14-1R-1)	TAZEWELL	1366	150
STA. 152+700		TO STA. 153+000		
FED. ROAD DIST. NO. 4		ILLINOIS FED. AID PROJECT		

NOTES: MAINLINE TRAFFIC CONTROL FOR I-74 SHALL BE IN ACCORDANCE WITH STANDARD 701101 AND 701406.

SEE TYPICAL SECTION (T) CIS-174-09B RAMP 19 STA 5+064.082 TO 5+162.752 (STAGE 3A-3) FOR THE TYPICAL SECTIONS OF THE CRASH INVESTIGATION SITE - I74-09B

SEE TEMPORARY TRAFFIC CONTROL SCHEDULE TO VERIFY LOCATION OF TEMPORARY CONCRETE BARRIERS. BARRIER WALL REFLECTORS SHALL BE INSTALLED ON ALL TEMPORARY CONCRETE BARRIER IN ACCORDANCE WITH THE SPECIAL PROVISION FOR THESE BARRIERS

SEE MOT GENERAL NOTES SHEET FOR TEMPORARY SIGNING LEGEND.



MATCH LINE STA. 152+700

MATCH LINE STA. 153+000

LEGEND	
	TEMPORARY PAVEMENT MARKING
	TEMPORARY PAVEMENT
	WORK ZONE
	TRAFFIC FLOW DIRECTION
	TEMPORARY CONCRETE BARRIER

- TEMPORARY PAVEMENT MARKING LINE - 100 mm, WHITE
- TEMPORARY PAVEMENT MARKING LINE - 100 mm, WHITE SKIP-DASH
- TEMPORARY PAVEMENT MARKING LINE - 100 mm, YELLOW
- TEMPORARY PAVEMENT MARKING LINE - 100 mm, YELLOW
- TEMPORARY PAVEMENT MARKING LINE - 100 mm, WHITE SKIP-DASH
- TEMPORARY PAVEMENT MARKING LINE - 100 mm, WHITE

THIS MAINTENANCE OF TRAFFIC PLAN SHOWS SPECIAL TRAFFIC CONTROL IN THIS AREA. IN ADDITION TO THE SPECIAL TRAFFIC CONTROL DETAILS SHOWN, IDOT TRAFFIC CONTROL HIGHWAY STANDARDS SHALL APPLY WHERE APPLICABLE AND AS DIRECTED BY THE ENGINEER. SEE TRAFFIC NOTES ON THE CONSTRUCTION SEQUENCING SHEET FOR STAGE 3A FOR APPLICABLE IDOT HIGHWAY STANDARDS.



REVISIONS	
NAME	DATE

ILLINOIS DEPARTMENT OF TRANSPORTATION
 F.A.I. ROUTE 74 (I-74)
 MAINTENANCE OF TRAFFIC
 STAGE 3A
 STA. 152+700 TO STA. 153+000 I-74
 DRAWN BY KMO
 DATE 12/20/2004
 CHECKED BY RTG