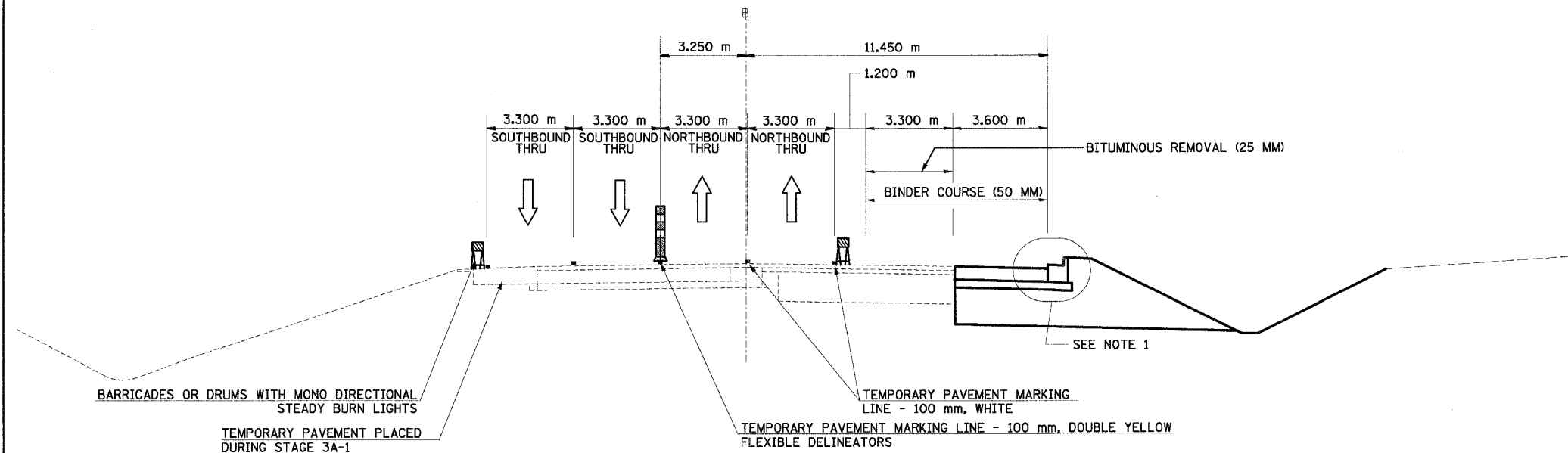
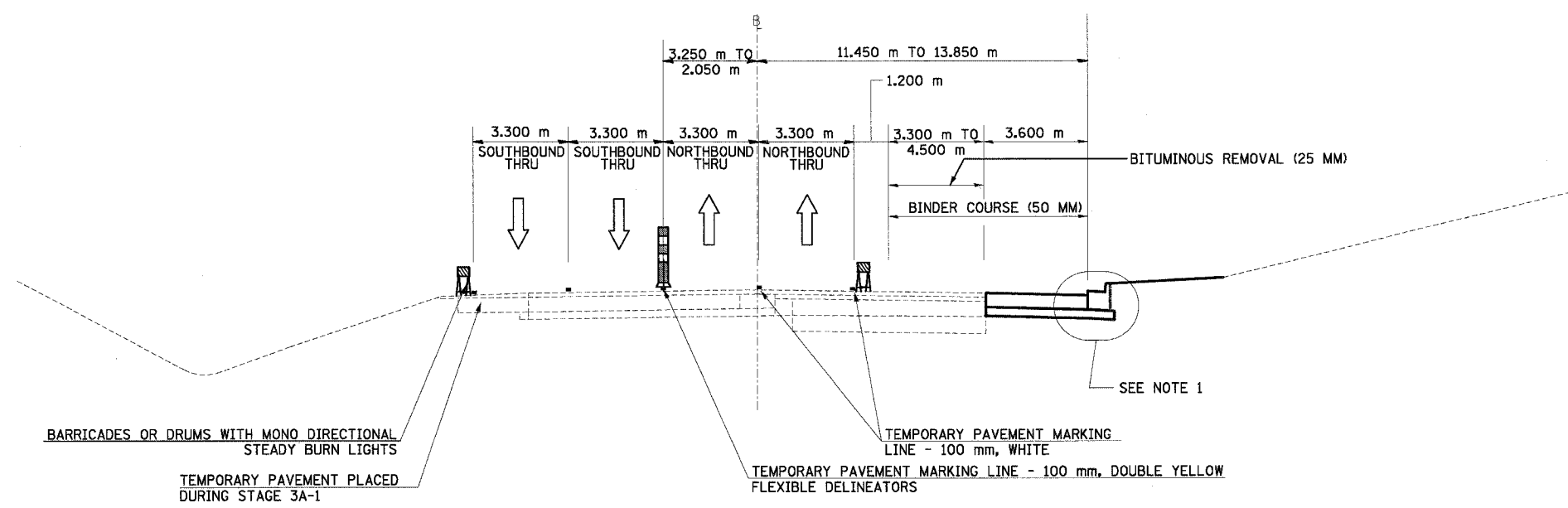


F.A.I. RTE.	SECTION	COUNTY	TOTAL SHEETS	SHEET NO.
74	*	TAZEWELL	1366	157
STA.		TO STA.		
FED. ROAD DIST. NO.		ILLINOIS FED. AID PROJECT		

*(90-1)R-2;90(13,14,14-1)R-1



NORTH MAIN ST MOT TYPICAL SECTION NO. 11A
 STA. 3+103.295 TO STA. 3+432.225 11A



NORTH MAIN ST MOT TYPICAL SECTION NO. 12A
 STA. 3+432.225 TO STA. 3+531.225 12A

- NOTES: 1. USE DISTRICT 4 STANDARD 602401-D4, TEMPORARY INLET DRAINAGE TREATMENT
 2. BINDER COURSE IS TO BE PLACED IN WORKZONE AREAS AS SHOWN

REVISIONS		ILLINOIS DEPARTMENT OF TRANSPORTATION FAI ROUTE 74 (I-74) MAINTENANCE OF TRAFFIC STAGE 3A-2 ILL. 116-U.S. 150-NORTH MAIN ST. TYPICAL SECTIONS 11A & 12A
NAME	DATE	
		URS URS CORPORATION CHICAGO, ILLINOIS DATE 12/20/04 DRAWN BY MRF CHECKED BY RTG