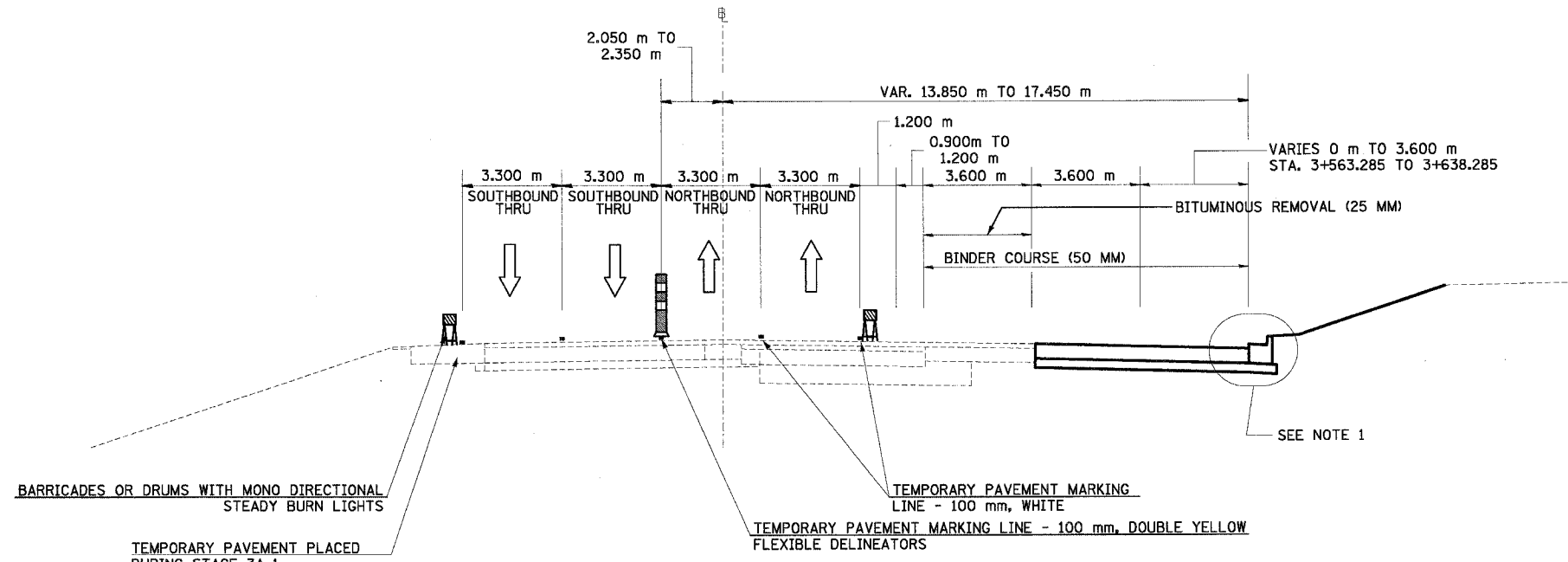
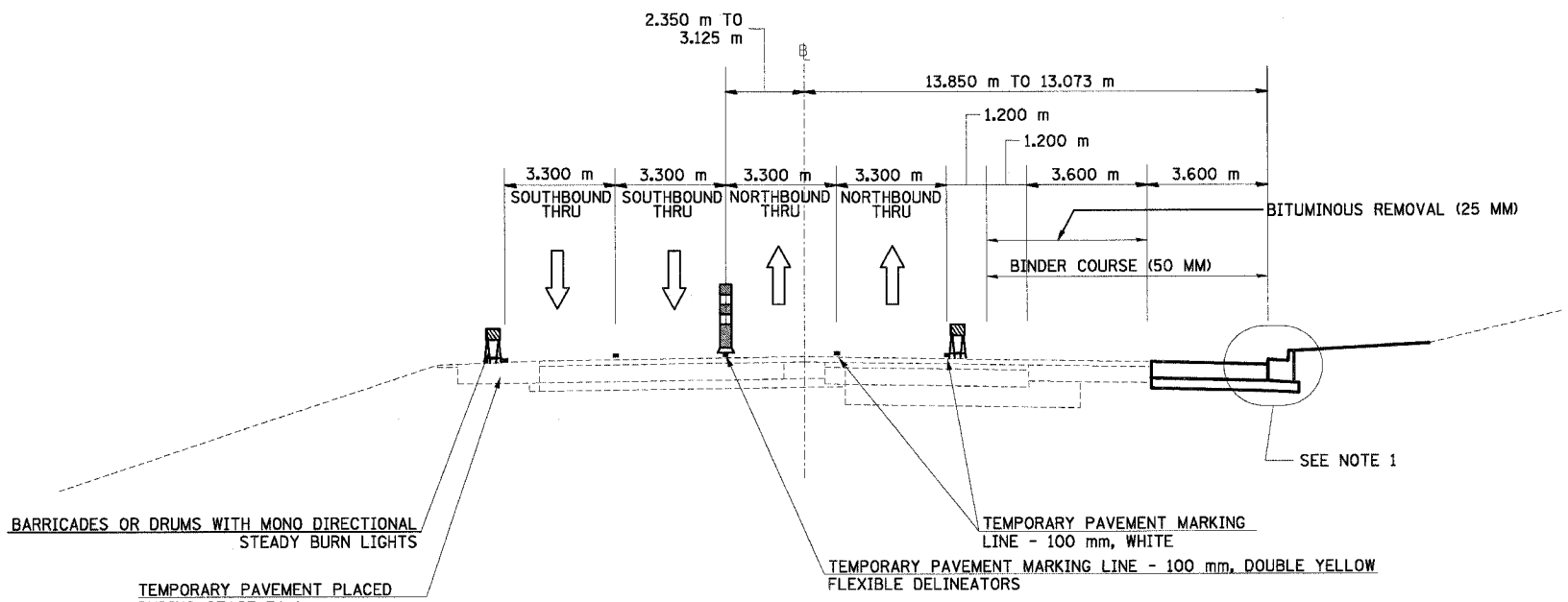


F.A.I. RTE.	SECTION	COUNTY	TOTAL SHEETS	SHEET NO.
74	*	TAZEWELL	1366	158
STA.		TO STA.		
FED. ROAD DIST. NO.		ILLINOIS	FED. AID PROJECT	

*(90-11)R-2;90(13,14,14-1)R-1



NORTH MAIN ST MOT TYPICAL SECTION NO. 13A (13A)
 STA. 3+531.225 TO STA. 3+842.800



NORTH MAIN ST MOT TYPICAL SECTION NO. 14A (14A)
 STA. 3+842.800 TO STA. 3+896.000

- NOTES: 1. USE DISTRICT 4 STANDARD 602401-D4, TEMPORARY INLET DRAINAGE TREATMENT
 2. BINDER COURSE IS TO BE PLACED IN WORKZONE AREAS AS SHOWN

REVISIONS	
NAME	DATE

ILLINOIS DEPARTMENT OF TRANSPORTATION
 FAI ROUTE 74 (I-74)
 MAINTENANCE OF TRAFFIC
 STAGE 3A-2
 ILL. 116-U.S. 150-NORTH MAIN ST.
 TYPICAL SECTIONS 13A & 14A
 DATE 12/20/04
 DRAWN BY MRF
 CHECKED BY RTG

