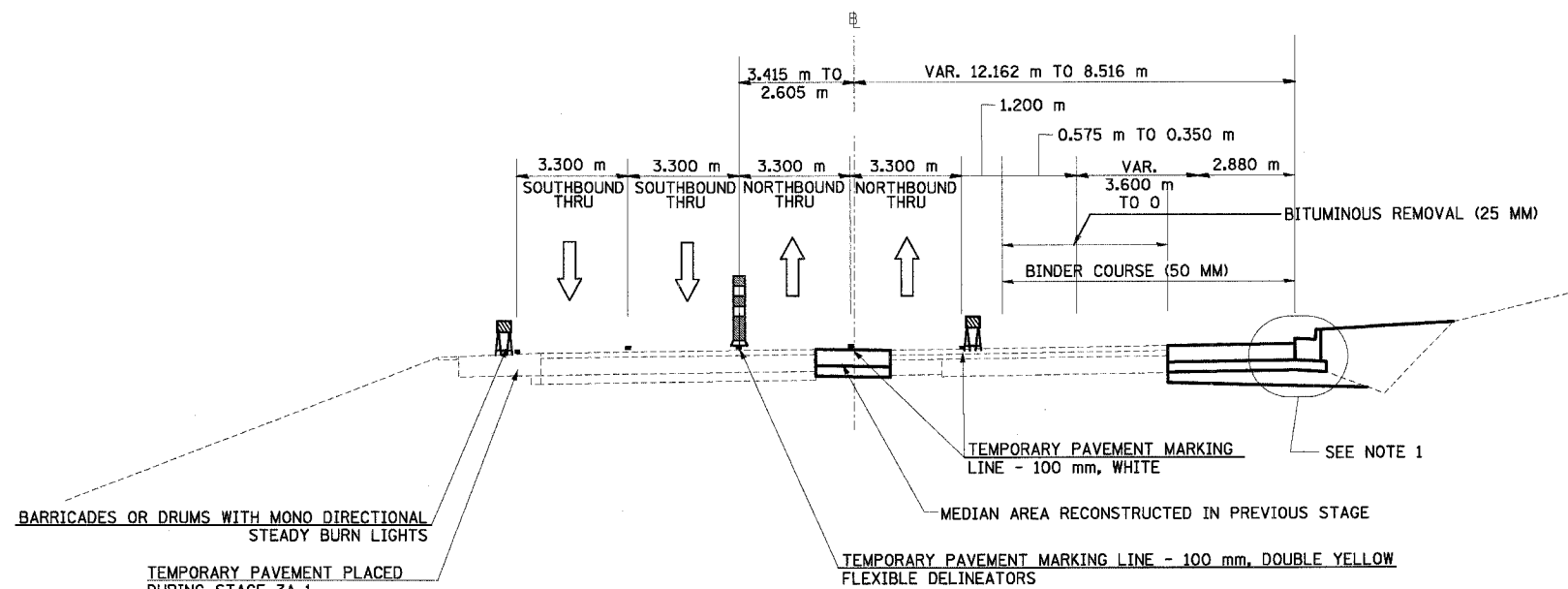


F.A.I. RTE.	SECTION	COUNTY	TOTAL SHEETS	SHEET NO.
74	*	TAZEWELL	1366	160
STA.		TO STA.		
FED. ROAD DIST. NO.		ILLINOIS FED. AID PROJECT		

*190-11)R-2;90(13,14,14-1)R-1



NORTH MAIN ST MOT TYPICAL SECTION NO. 17A (17A)
 STA. 4+013.000 TO STA. 4+157.000

*MAINTENANCE OF TRAFFIC
 ENDS AT STA 4+237.919
 END OF RESURFACE AND WIDENING

- NOTES: 1. USE DISTRICT 4 STANDARD 602401-D4, TEMPORARY INLET DRAINAGE TREATMENT
 2. BINDER COURSE IS TO BE PLACED IN WORKZONE AREAS AS SHOWN

REVISIONS	
NAME	DATE

ILLINOIS DEPARTMENT OF TRANSPORTATION
 FAI ROUTE 74 (I-74)
 MAINTENANCE OF TRAFFIC
 STAGE 3A-2
 ILL. 116-U.S. 150-NORTH MAIN ST.
 TYPICAL SECTION 17A



DATE 12/20/04
 DRAWN BY MRF
 CHECKED BY RTG