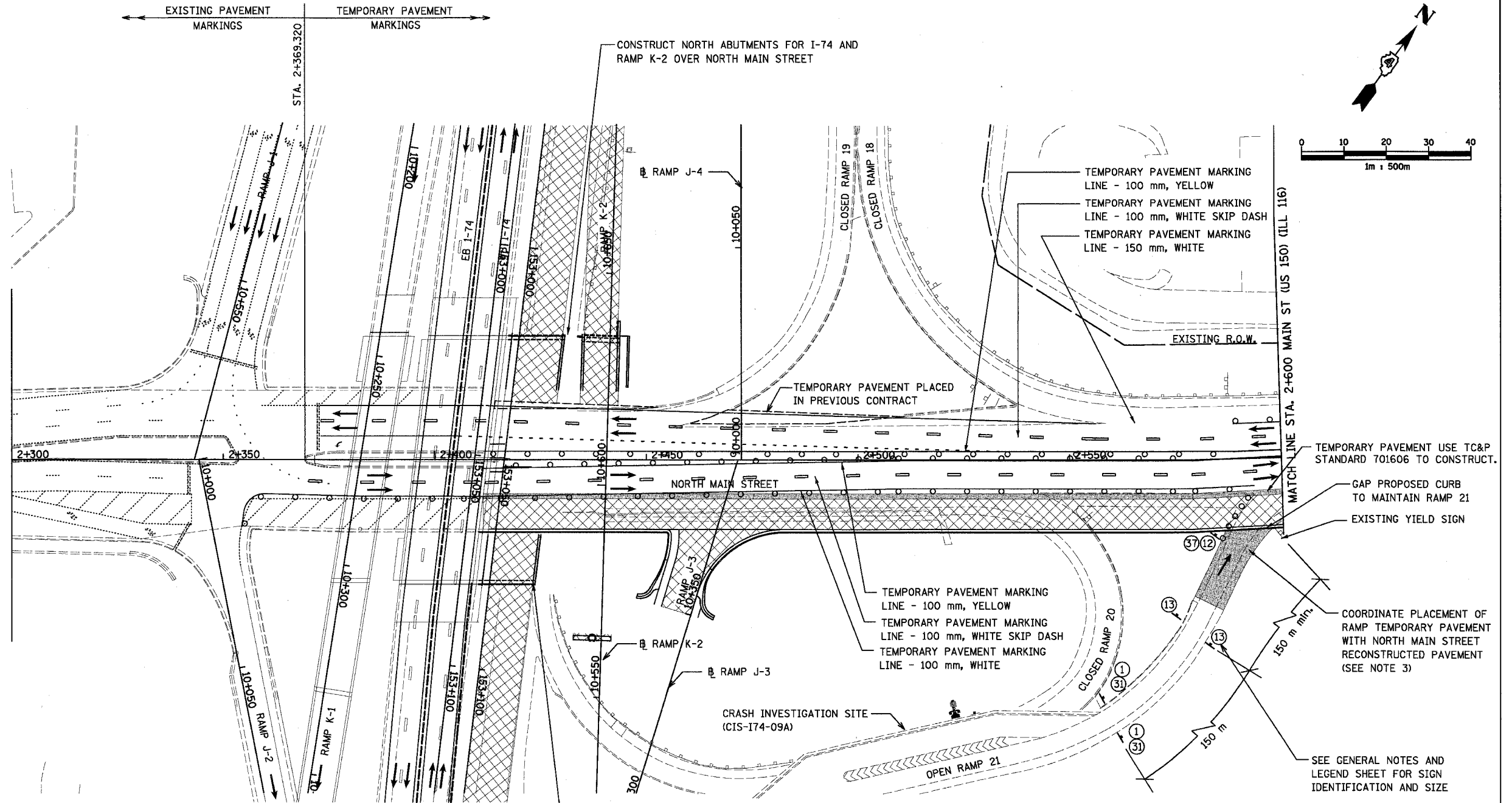
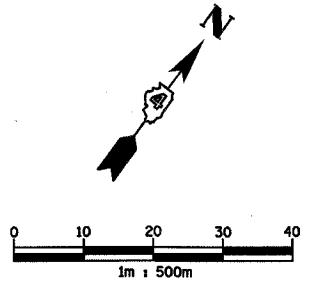


F.A.I. RTE.	SECTION	COUNTY	TOTAL SHEETS	SHEET NO.
74	(90-11R-2; 90(13,14,14-1)R-1	TAZEWELL	1366	161
STA.	2+300	TO STA.	2+600	
FED. ROAD DIST. NO. 4	ILLINOIS FED. AID PROJECT			



NOTES:

1. USE HIGHWAY STANDARD 701006 (RAMPS).
2. USE I-74 PROJECT STANDARD 701101-I74 TO MAINTAIN ENTRANCE RAMP TO NB NORTH MAIN ST FROM WB I-74.
3. WORK RELATED TO RAMP TEMPORARY PAVEMENT AND RECONSTRUCTION OF NORTH MAIN STREET MUST BE COORDINATED BY CONTRACTOR SO THAT ACCESS TO NORTH MAIN ST FROM RAMP 21 IS MAINTAINED CONTINUOUSLY
4. TRAFFIC CONTROL AND CONSTRUCTION SIGNAGE FOR NORTH MAIN STREET SHALL BE IN ACCORDANCE WITH STANDARD 701602

CONSTRUCT SOUTH ABUTMENT FOR I-74 OVER NORTH MAIN STREET

THIS MAINTENANCE OF TRAFFIC PLAN SHOWS SPECIAL TRAFFIC CONTROL IN THIS AREA. IN ADDITION TO THE SPECIAL TRAFFIC CONTROL DETAILS SHOWN, IDOT TRAFFIC CONTROL HIGHWAY STANDARDS SHALL APPLY WHERE APPLICABLE AND AS DIRECTED BY THE ENGINEER. SEE TRAFFIC NOTES ON THE CONSTRUCTION SEQUENCING SHEET FOR STAGE 3A-2 FOR APPLICABLE IDOT HIGHWAY STANDARDS.

LEGEND

- WORK ZONE
- TEMPORARY PAVEMENT
- TEMPORARY PAVEMENT MARKING
- TRAFFIC FLOW DIRECTION
- SIGN, SEE GENERAL NOTES AND LEGEND SHEET FOR SIGN TYPE
- DRUM WITH STEADY BURNING MONO-DIRECTIONAL LIGHT

REVISIONS	
NAME	DATE



ILLINOIS DEPARTMENT OF TRANSPORTATION
 F.A.I. ROUTE 74 (I-74)
 MAINTENANCE OF TRAFFIC
 STAGE 3A-2
 NORTH MAIN STREET 2+300 TO 2+600
 DRAWN BY KMO
 CHECKED BY RTG
 DATE 12/20/2004