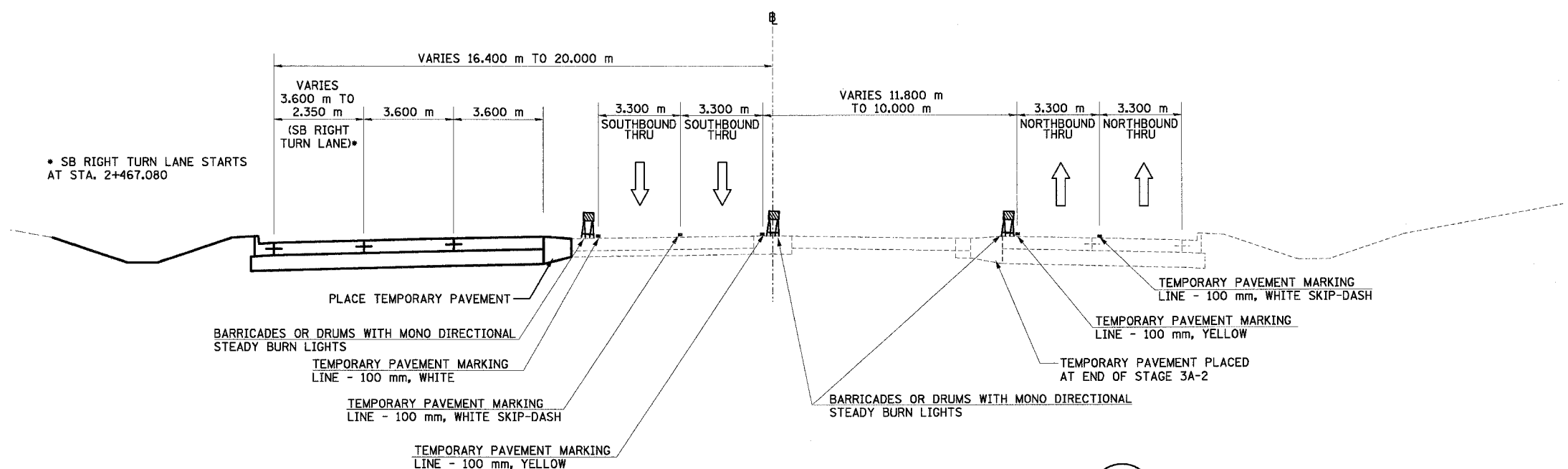
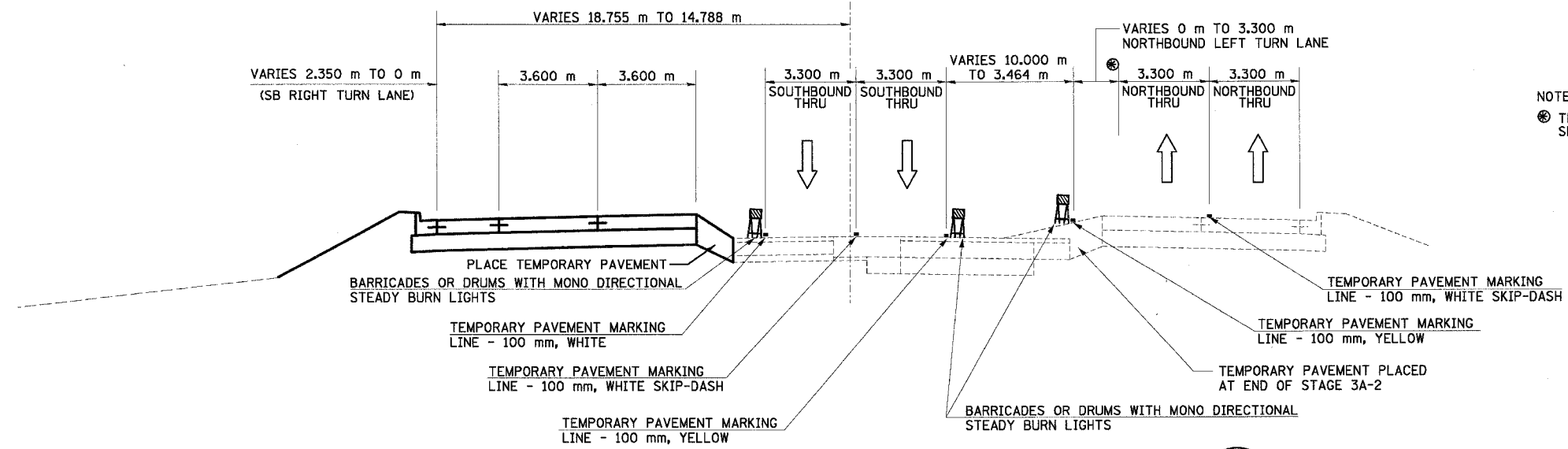


F.A.I. RTE.	SECTION	COUNTY	TOTAL SHEETS	SHEET NO.
74	*	TAZEWELL	1366	167
STA. *		TO STA.		
FED. ROAD DIST. NO.		ILLINOIS FED. AID PROJECT		

*(90-1)R-2;90(13,14,14-1)R-1



NORTH MAIN ST MOT TYPICAL SECTION NO. 5B (5B)
 STA. 2+413.245 TO STA. 2+578.825
 (CONSTRUCT PROPOSED BRIDGE PIERS
 FOR I-74 AND RAMP K-2 DURING SUBSTAGE 3A-3a)



NOTES:
 * THIS 3.300 m BREAKOVER AREA SHALL NOT EXCEED AN 5% GRADE.

NORTH MAIN ST MOT TYPICAL SECTION NO. 6B (6B)
 STA. 2+578.825 TO STA. 2+643.696

REVISIONS	
NAME	DATE

ILLINOIS DEPARTMENT OF TRANSPORTATION
 FAI ROUTE 74 (I-74)
 MAINTENANCE OF TRAFFIC
 STAGE 3A-3
 ILL. 116-U.S. 150-NORTH MAIN ST.
 TYPICAL SECTIONS 5B & 6B
 DATE 12/20/2004
 DRAWN BY MRF
 CHECKED BY RTG

