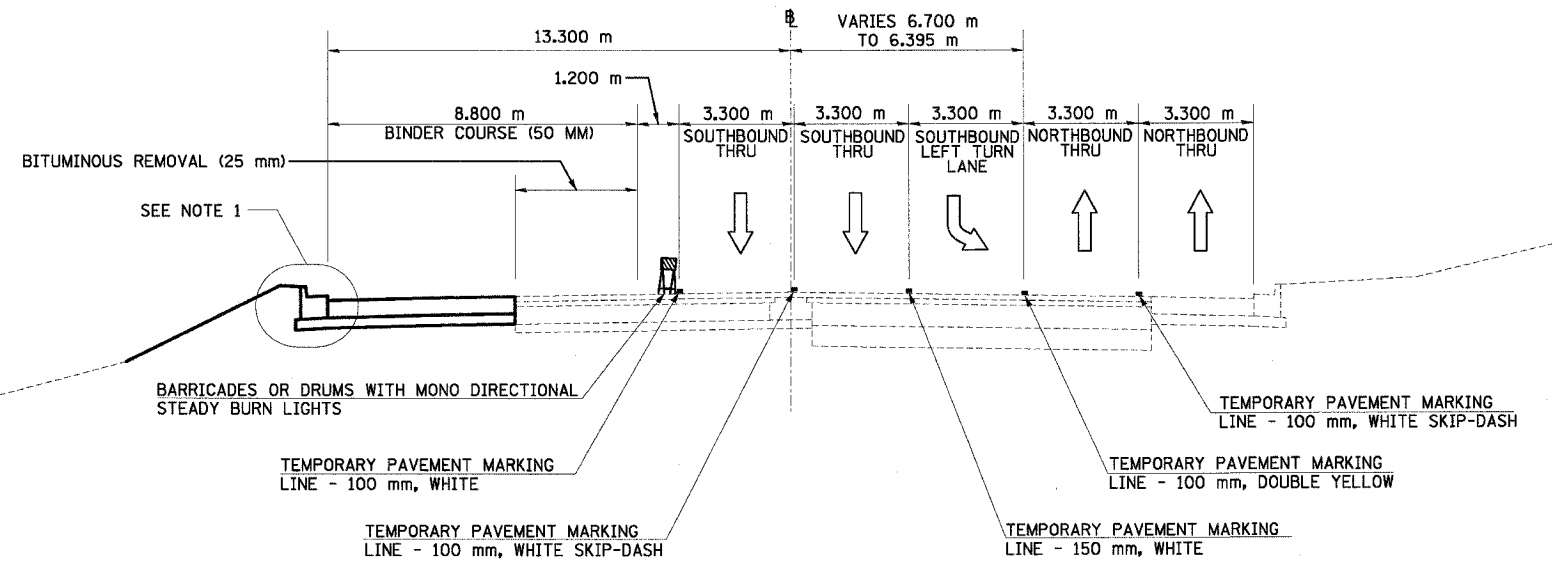


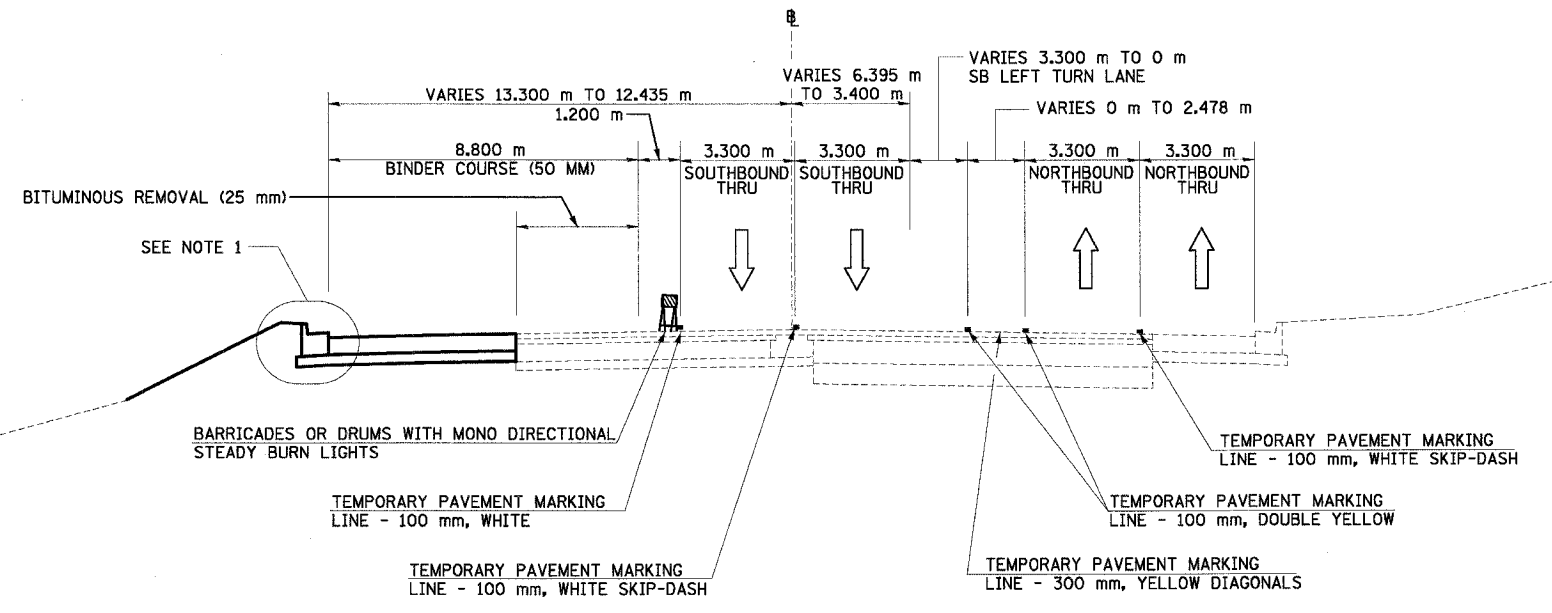
F.A.I. RTE.	SECTION	COUNTY	TOTAL SHEETS	SHEET NO.
74	*	TAZEWELL	1366	170
STA.		TO STA.		
FED. ROAD DIST. NO.		ILLINOIS FED. AID PROJECT		

\*(90-11)R-2;90(13,14,14-1)R-1



**NORTH MAIN ST MOT TYPICAL SECTION NO. 11B**  
 STA. 2+968.034 TO STA. 3+018.034

11B



**NORTH MAIN ST MOT TYPICAL SECTION NO. 12B**  
 STA. 3+018.034 TO STA. 3+058.794

12B

- NOTES: 1. USE DISTRICT 4 STANDARD 602401-D4, TEMPORARY INLET DRAINAGE TREATMENT  
 2. BINDER COURSE IS TO BE PLACED IN WORKZONE AREAS AS SHOWN

REVISIONS	
NAME	DATE

ILLINOIS DEPARTMENT OF TRANSPORTATION  
 FAI ROUTE 74 (I-74)  
 MAINTENANCE OF TRAFFIC  
 STAGE 3A-3  
 ILL. 116-U.S. 150-NORTH MAIN ST.  
 TYPICAL SECTIONS 11B & 12B  
 DATE 12/20/2004  
 DRAWN BY MRF  
 CHECKED BY RTG

