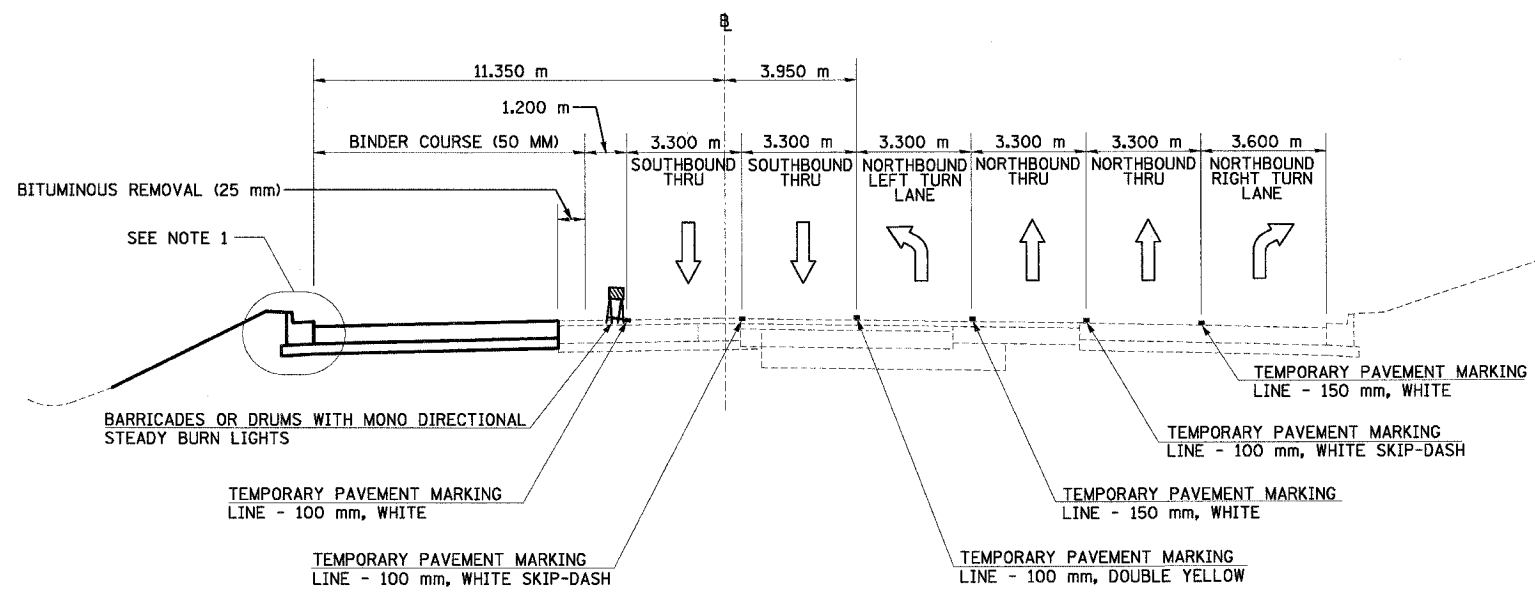


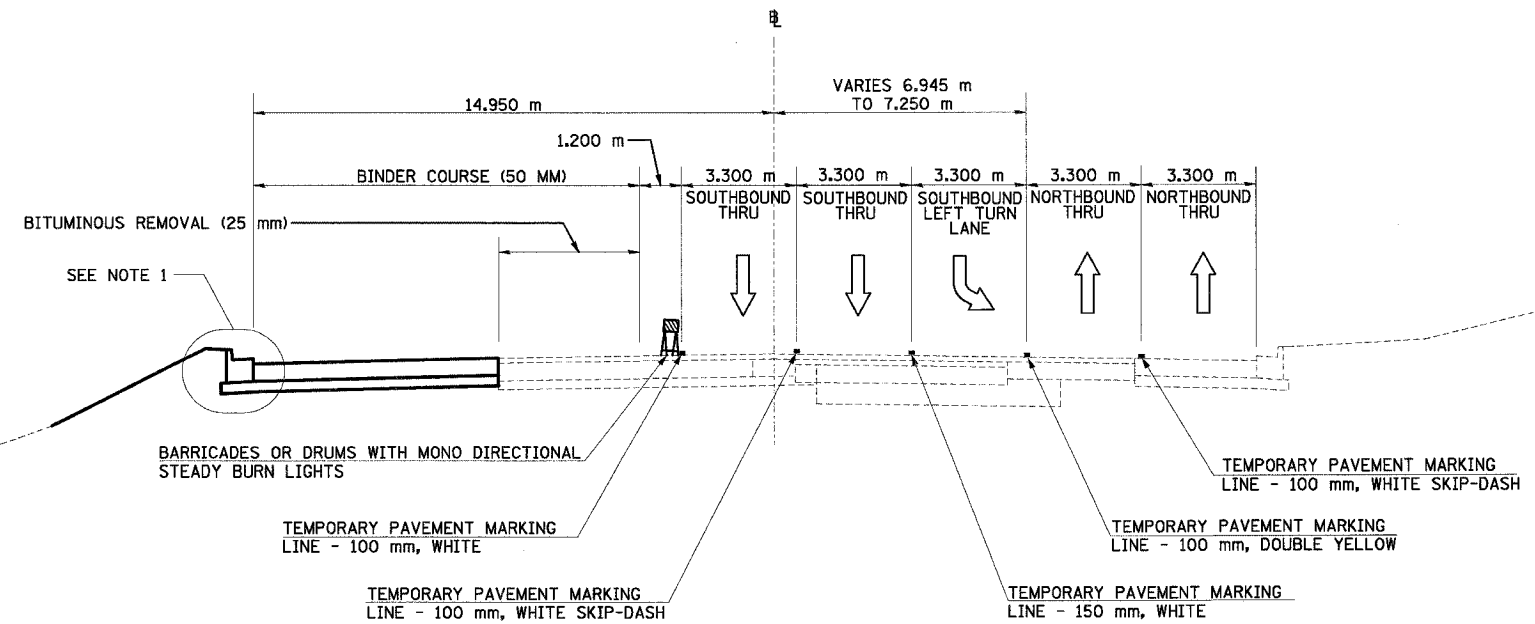
F.A.I. RTE.	SECTION	COUNTY	TOTAL SHEETS	SHEET NO.
74	*	FAZEWELL	1366	173
STA. TO STA.		ILLINOIS FED. AID PROJECT		
FED. ROAD DIST. NO.		ILLINOIS FED. AID PROJECT		

\*190-11)R-2;90(13,14,14-1)R-1



**NORTH MAIN ST MOT TYPICAL SECTION NO. 17B**  
 STA. 3+651.297 TO STA. 3+701.297

17B



**NORTH MAIN ST MOT TYPICAL SECTION NO. 18B**  
 STA. 3+751.313 TO STA. 3+801.313

18B

- NOTES: 1. USE DISTRICT 4 STANDARD 602401-D4, TEMPORARY INLET DRAINAGE TREATMENT  
 2. BINDER COURSE IS TO BE PLACED IN WORKZONE AREAS AS SHOWN

REVISIONS	
NAME	DATE

ILLINOIS DEPARTMENT OF TRANSPORTATION  
 FAI ROUTE 74 (I-74)  
 MAINTENANCE OF TRAFFIC  
 STAGE 3A-3  
 ILL. 116-U.S. 150-NORTH MAIN ST.  
 TYPICAL SECTIONS 17B & 18B  
 DATE 12/20/2004  
 DRAWN BY MRF  
 CHECKED BY RTG

