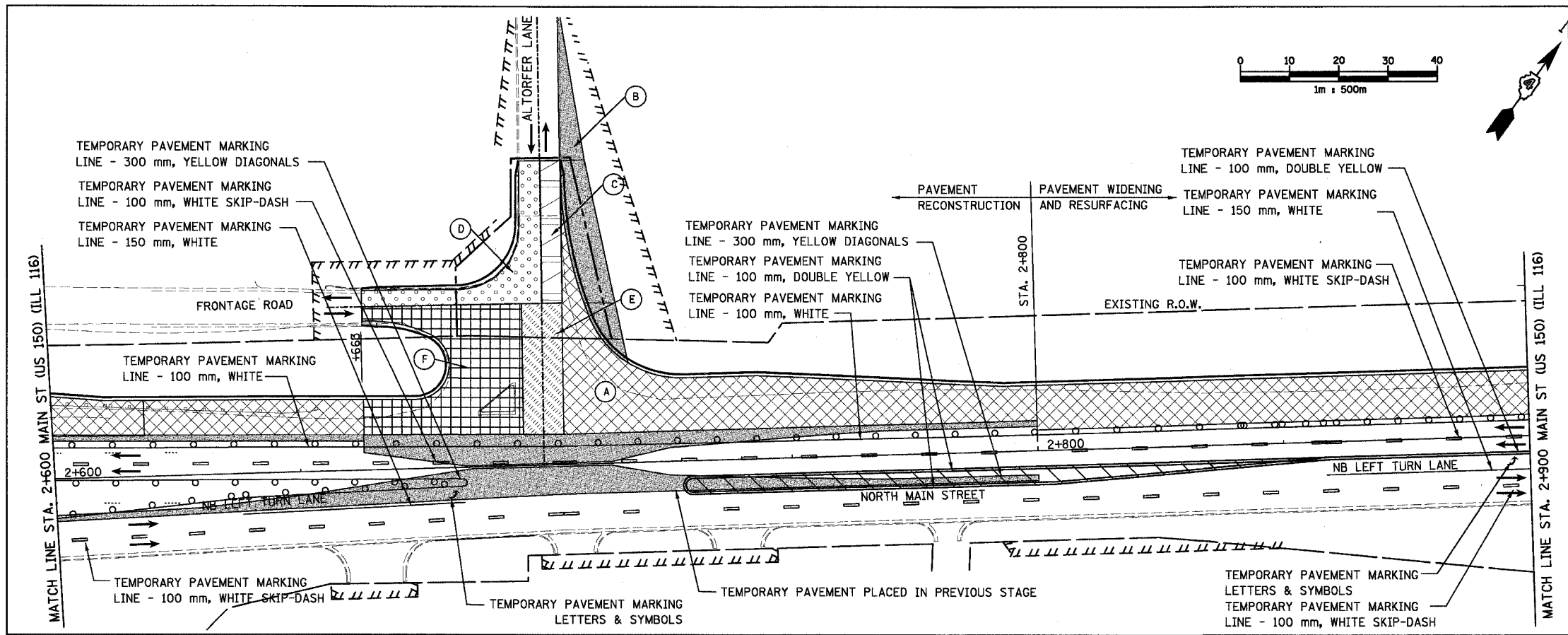
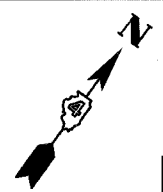
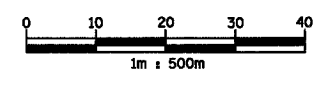
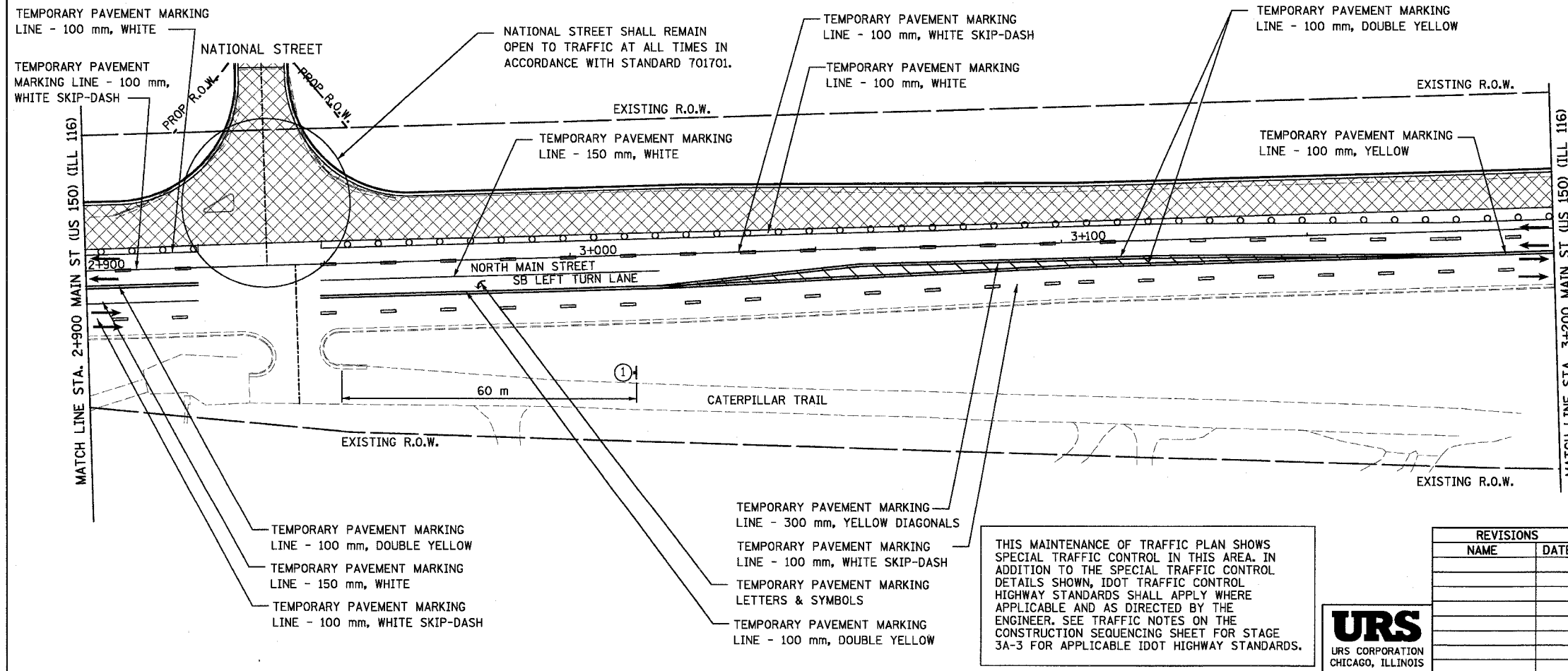


F.A.I. RTE.	SECTION	COUNTY	TOTAL SHEETS NO.
74	(90-11R-2) 9013,14,14-1R-1	TAZEWELL	1366 / 181
STA. 2+600 TO STA. 3+200		ILLINOIS FED. AID PROJECT	



- ALTORFER LANE STAGING**
- STEP A**
REMOVE EXISTING CC&G ON NORTH SIDE OF EXISTING ALTORFER LANE BEYOND THE LIMITS OF THE NEW PAVEMENT APPROX 33M. CONSTRUCT THE PROPOSED PAVEMENT (A) TO THE LIMITS SHOWN ALONG ALTORFER LANE. DO NOT BUILD THE PROPOSED CC&G ALONG THE NORTH SIDE OF THIS NEW PAVEMENT.
- STEP B**
CONSTRUCT PROPOSED TEMPORARY WIDENING AS SHOWN AS (B) AND TIE INTO ALTORFER LANE USING A 33 M TAPER.
- STEP C**
CONSTRUCT PROPOSED PCC PAVEMENT SHOWN AS (C) WHILE TRAFFIC SPLITS THE AREA.
- STEP D**
CONSTRUCT SOUTHWEST QUADRANT WHILE TRAFFIC IS SHIFTED TO THE NORTH ON AREAS (B) AND (C)
- STEP E**
CONSTRUCTION OF (E) MUST BE COMPLETED OVER WEEKEND PERIOD, TRAFFIC SPLITS THE AREA.
- STEP F**
CONSTRUCT AREA (F) BEGINNING WITH THE NORTHERNMOST PANELS AND CONTINUING SOUTH.
- STEP G**
REMOVE THE TEMPORARY WIDENING AND INSTALL THE PROPOSED CC&G ALONG THE NORTH SIDE OF THE INTERSECTION AND ALTORFER LANE.



- NOTES:**
- 1 THE NORTH MAIN STREET/ALTORFER LANE INTERSECTION SHALL REMAIN OPEN AND ACCESSIBLE AT ALL TIMES. ADJUST TRAFFIC CONTROL ITEMS AS INTERSECTION STAGING WARRANTS.
 - 2 CONTRACTOR IS TO MAINTAIN ACCESS TO ALL ENTRANCES, DRIVEWAYS AND SIDE STREETS AT ALL TIMES BY USING LOCALIZED STAGED CONSTRUCTION OR BY OBTAINING CONSENT TO CLOSE AN ENTRANCE FROM THE OWNER SHOULD THERE BE MORE THAN ONE.

LEGEND

	WORK ZONE
	TEMPORARY PAVEMENT
	TEMPORARY PAVEMENT MARKING
	TRAFFIC FLOW DIRECTION
	SIGN, SEE GENERAL NOTES AND LEGEND SHEET FOR SIGN TYPE
	DRUM WITH STEADY BURNING MONO-DIRECTIONAL LIGHT

THIS MAINTENANCE OF TRAFFIC PLAN SHOWS SPECIAL TRAFFIC CONTROL IN THIS AREA. IN ADDITION TO THE SPECIAL TRAFFIC CONTROL DETAILS SHOWN, IDOT TRAFFIC CONTROL HIGHWAY STANDARDS SHALL APPLY WHERE APPLICABLE AND AS DIRECTED BY THE ENGINEER. SEE TRAFFIC NOTES ON THE CONSTRUCTION SEQUENCING SHEET FOR STAGE 3A-3 FOR APPLICABLE IDOT HIGHWAY STANDARDS.



REVISIONS	
NAME	DATE

ILLINOIS DEPARTMENT OF TRANSPORTATION
 F.A.I. ROUTE 74 (I-74)
 MAINTENANCE OF TRAFFIC
 STAGE 3A-3
 NORTH MAIN STREET 2+600 TO 3+200
 DRAWN BY KMO
 CHECKED BY RTG
 DATE 12/20/2004