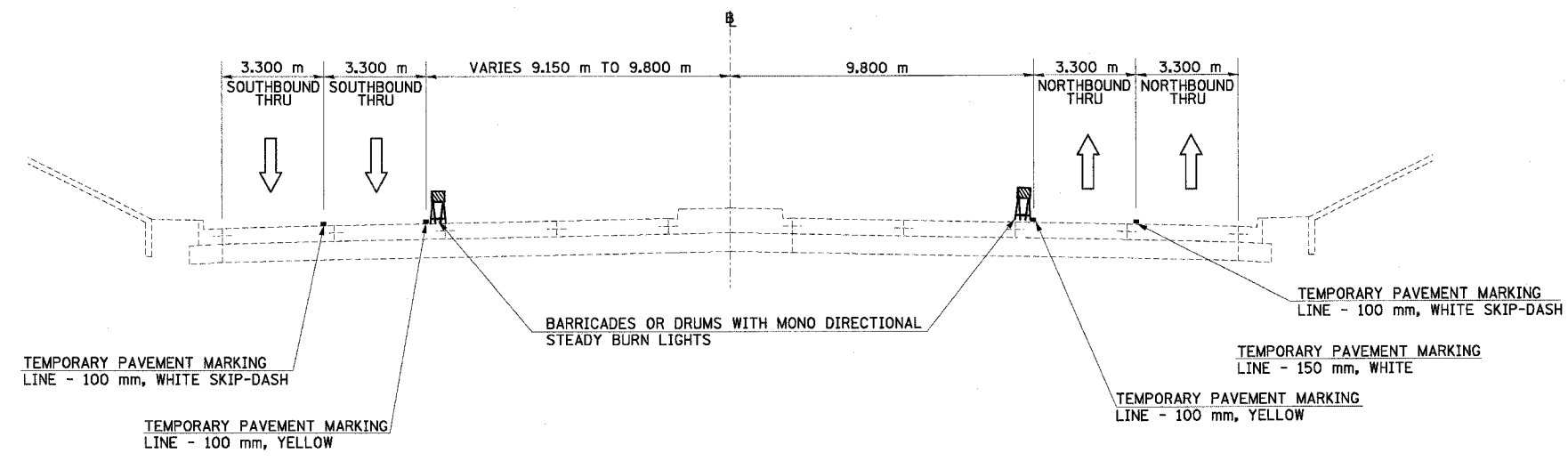
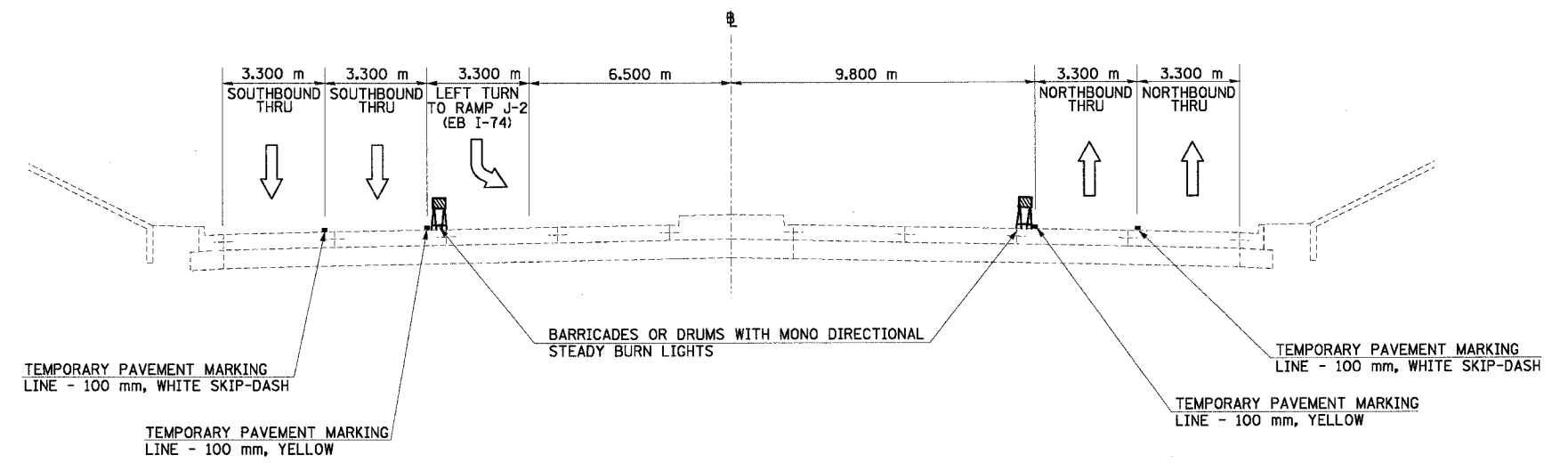


F.A.I. RTE.	SECTION	COUNTY	TOTAL SHEETS	SHEET NO.
74	*	TAZEWELL	1366	186
STA.		TO STA.		
FED. ROAD DIST. NO.		ILLINOIS FED. AID PROJECT		

80201
*(90-1)R-2;90(13,14,14-1)R-1



NORTH MAIN ST MOT TYPICAL SECTION NO. 5C (5C)
STA. 2+354.000 TO STA. 2+396.840



NORTH MAIN ST MOT TYPICAL SECTION NO. 6C (6C)
STA. 2+396.840 TO STA. 2+402.933

REVISIONS	
NAME	DATE



ILLINOIS DEPARTMENT OF TRANSPORTATION
FAI ROUTE 74 (I-74)
MAINTENANCE OF TRAFFIC
STAGE 3A-4
ILL. 116-U.S. 150-NORTH MAIN ST.
TYPICAL SECTIONS 5C & 6C
DATE 12/20/2004
DRAWN BY MRF
CHECKED BY RTG