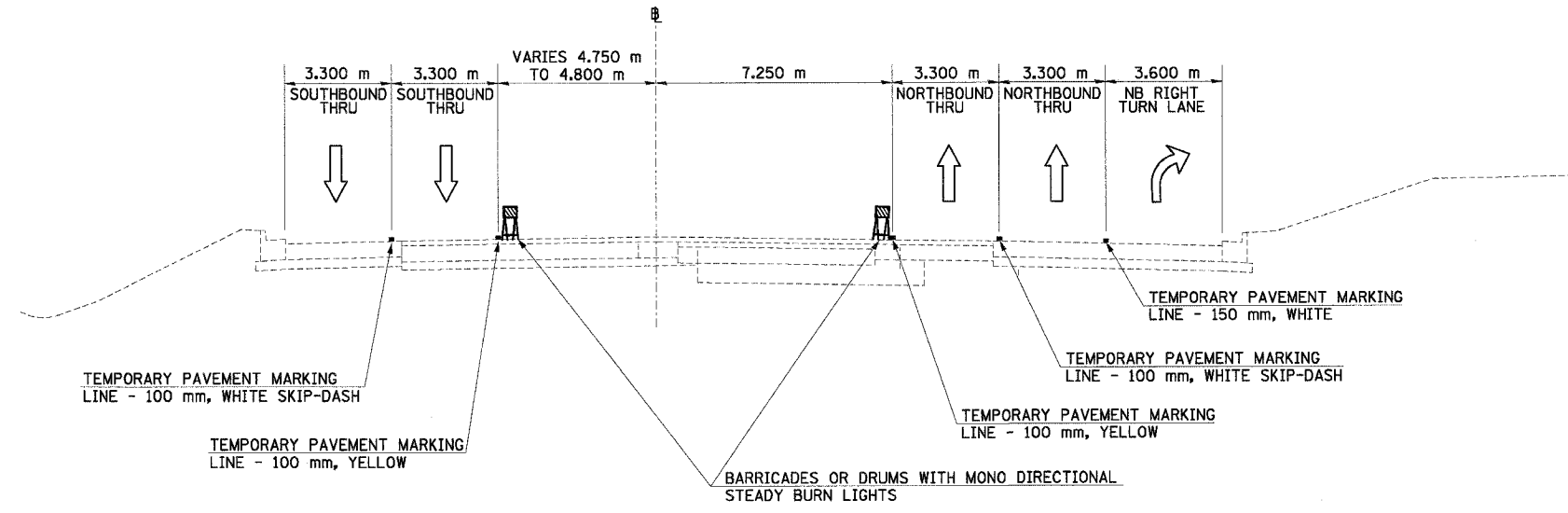
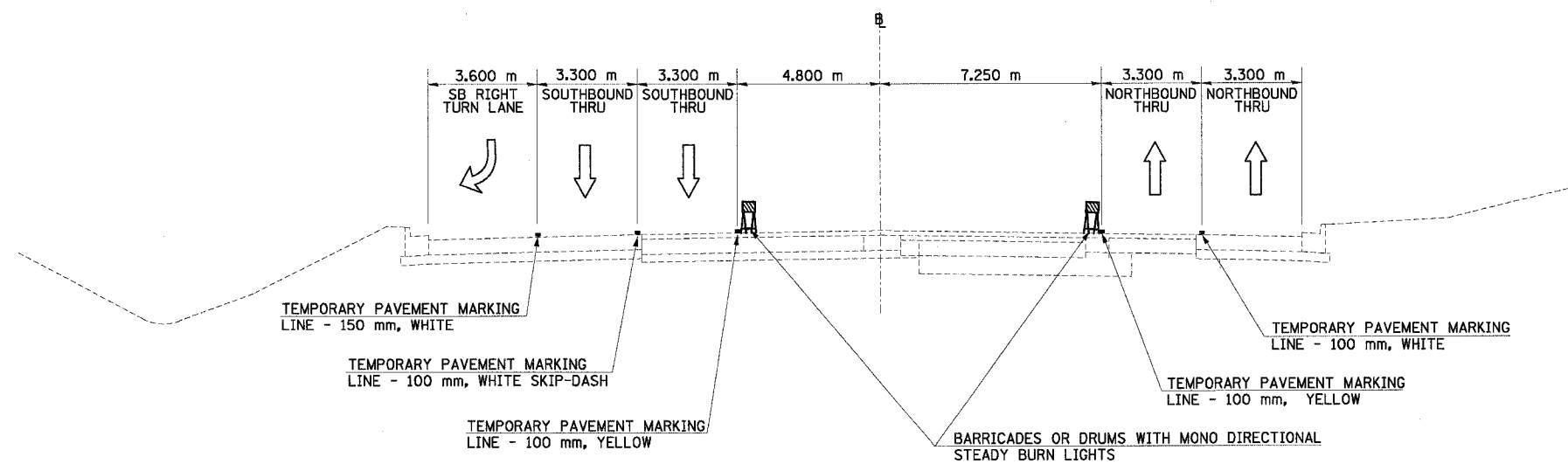


F.A.I. RTE.	SECTION	COUNTY	TOTAL SHEETS	SHEET NO.
74	*	TAZEWELL	1366	192
STA.		TO STA.		
FED. ROAD DIST. NO.		ILLINOIS FED. AID PROJECT		

\*(90-11)R-2;90(13,14,14-1)R-1



**NORTH MAIN ST MOT TYPICAL SECTION NO. 17C** (17C)  
 STA. 3+638.285 TO STA. 3+730.000  
 (TAPER FOR NB RIGHT TURN LANE FROM STA. 3+563.285 TO STA. 3+638.285)



**NORTH MAIN ST MOT TYPICAL SECTION NO. 18C** (18C)  
 STA. 3+730.000 TO STA. 3+820.996  
 (TAPER FOR SB RIGHT TURN LANE FROM STA. 3+820.996 TO STA. 3+895.996)

NOTE:  
 50mm BINDER COURSE TO BE PLACED WITHIN CENTER AREAS OF NORTH MAIN STREET THAT HAVE NOT RECEIVED BINDER COURSE DURING STAGES 3A-2 AND 3A-3. BARRICADES SHALL BE PLACED TO PROTECT THE AREAS THAT WILL RECEIVE BINDER COURSE DURING STAGE 3A-4

REVISIONS	
NAME	DATE



ILLINOIS DEPARTMENT OF TRANSPORTATION  
 FAI ROUTE 74 (I-74)  
 MAINTENANCE OF TRAFFIC  
 STAGE 3A-4  
 ILL. 116-U.S. 150-NORTH MAIN ST.  
 TYPICAL SECTIONS 17C & 18C  
 DATE 12/20/2004  
 DRAWN BY MRF  
 CHECKED BY RTG