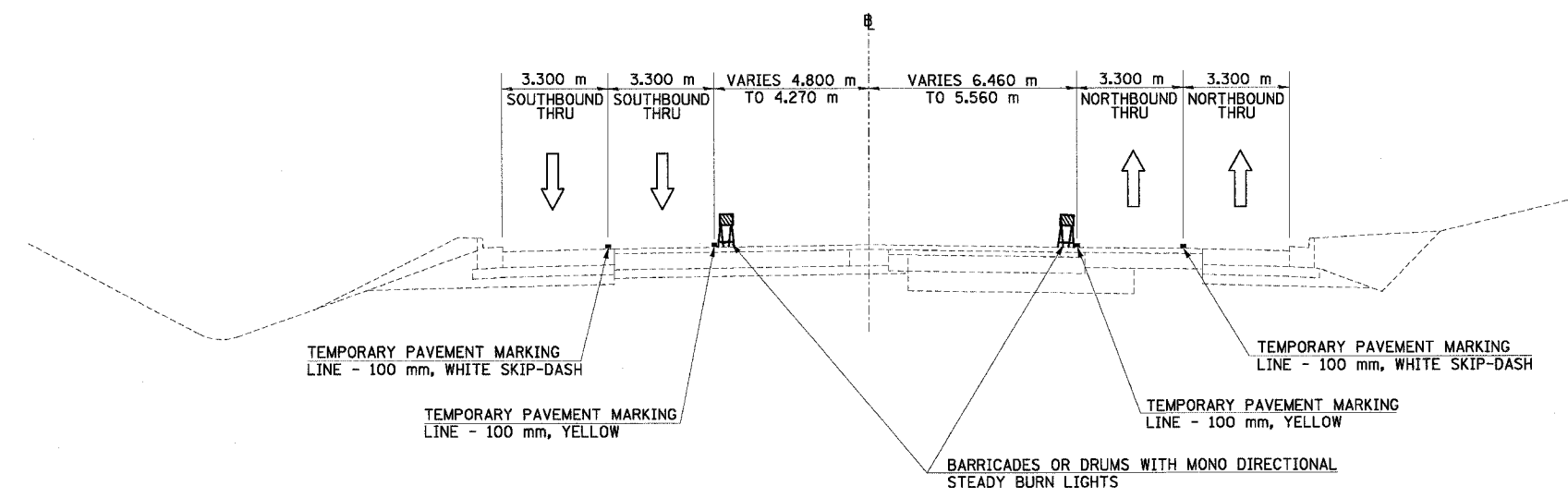
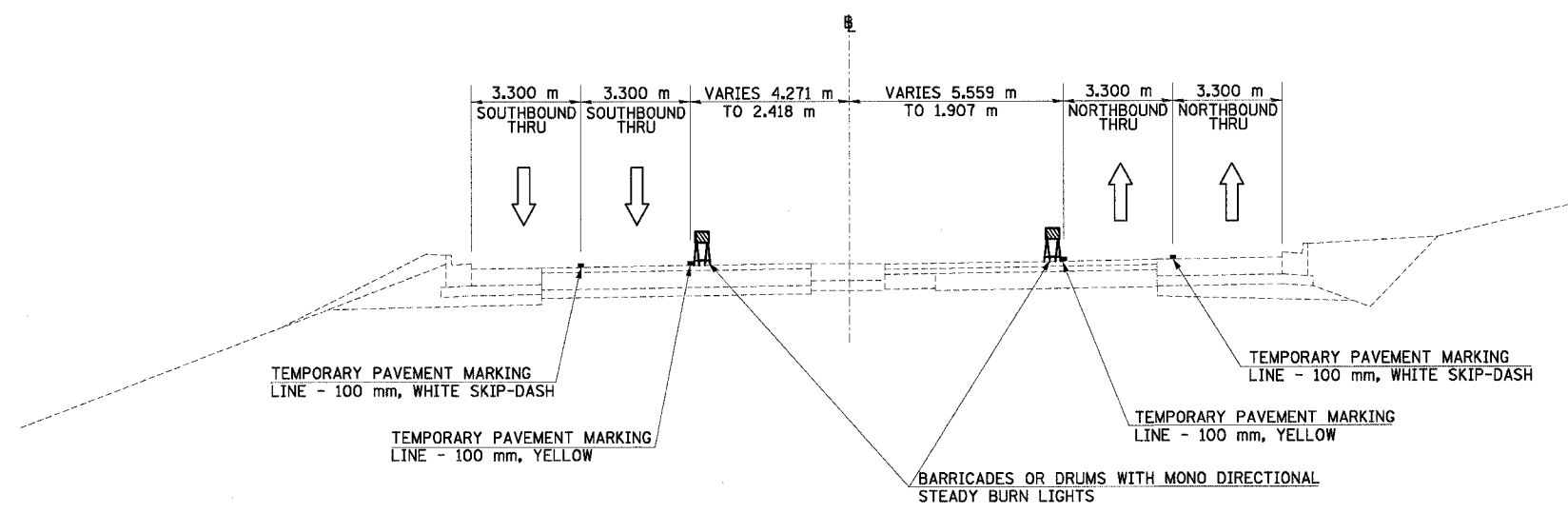


F.A.I. RTE.	SECTION	COUNTY	TOTAL SHEETS	SHEET NO.
74	*	TAZEWELL	1366	194
STA.		TO STA.		
FED. ROAD DIST. NO.	ILLINOIS	FED. AID PROJECT		

*(90-11)R-2:90(13,14,14-1)R-1



NORTH MAIN ST MOT TYPICAL SECTION NO. 21C (21C)
 STA. 3+977.000 TO STA. 4+013.000



NORTH MAIN ST MOT TYPICAL SECTION NO. 22C (22C)
 STA. 4+013.000 TO STA. 4+157.000
 * MAINTENANCE OF TRAFFIC ENDS AT STA 4+157

NOTE:
 50mm BINDER COURSE TO BE PLACED WITHIN CENTER AREAS OF NORTH MAIN STREET THAT HAVE NOT RECEIVED BINDER COURSE DURING STAGES 3A-2 AND 3A-3. BARRICADES SHALL BE PLACED TO PROTECT THE AREAS THAT WILL RECEIVE BINDER COURSE DURING STAGE 3A-4

REVISIONS	
NAME	DATE

ILLINOIS DEPARTMENT OF TRANSPORTATION
 FAI ROUTE 74 (I-74)
 MAINTENANCE OF TRAFFIC
 STAGE 3A-4
 ILL. 116-U.S. 150-NORTH MAIN ST.
 TYPICAL SECTIONS 21C & 22C
 DATE 12/20/2004
 DRAWN BY MRF
 CHECKED BY RTG

