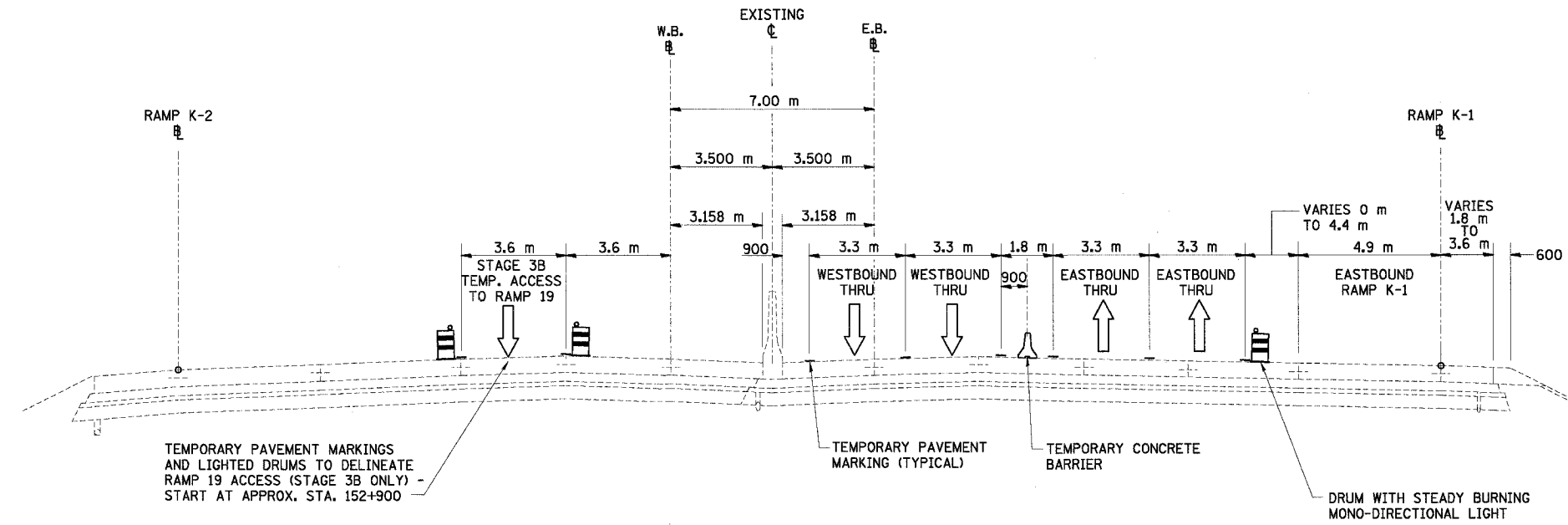
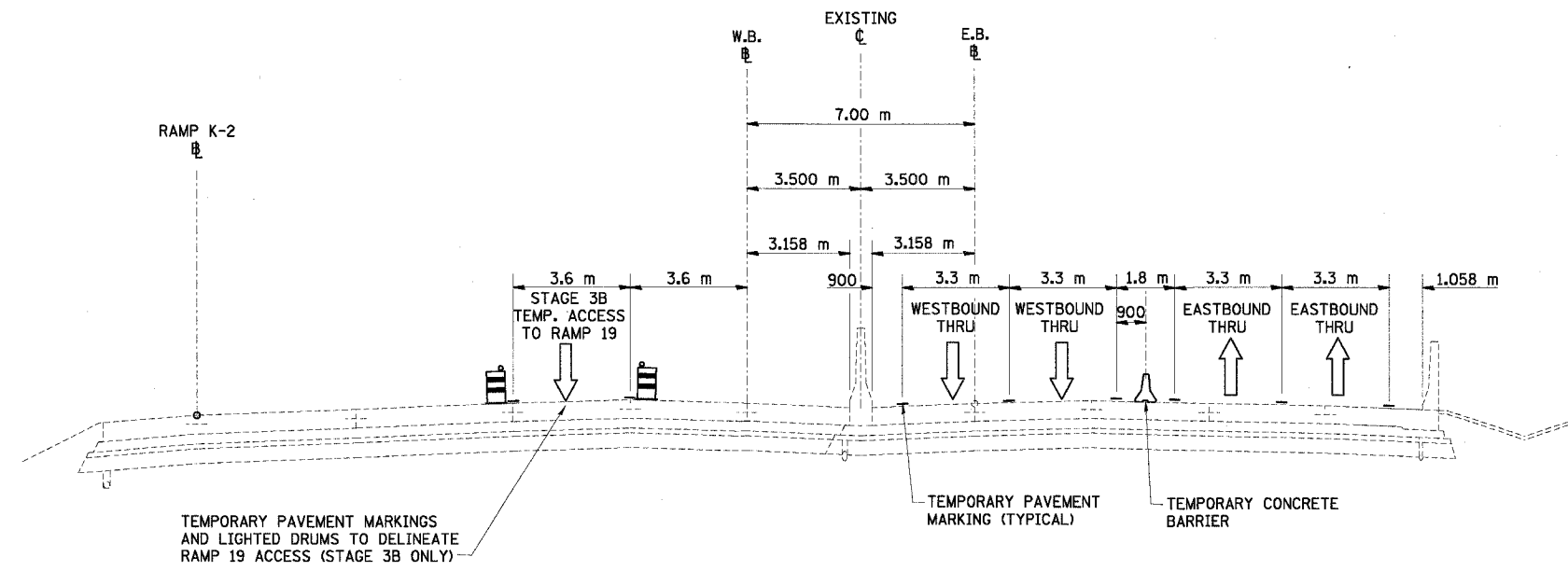


F.A.I. RTE.	SECTION	COUNTY	TOTAL SHEETS	SHEET NO.
74	90-11R-2; 9013,14,14-1R-1	TAZEWELL	1366	202
STA.		TO STA.		
FED. ROAD DIST. NO. 4		ILLINOIS FED. AID PROJECT		



**I-74 MOT TYPICAL SECTION NO. 7**  
STA. 152+877.964 TO STA. 152+942.154

7



**I-74 MOT TYPICAL SECTION NO. 8**  
STA. 152+942.154 TO STA. 153+012.640

8

REVISIONS		ILLINOIS DEPARTMENT OF TRANSPORTATION F.A.I. ROUTE 74 (I-74) MAINTENANCE OF TRAFFIC STAGE 3B I-74 TYPICAL SECTIONS 7 & 8 DRAWN BY KMO CHECKED BY RTC DATE 12/20/2004
NAME	DATE	

