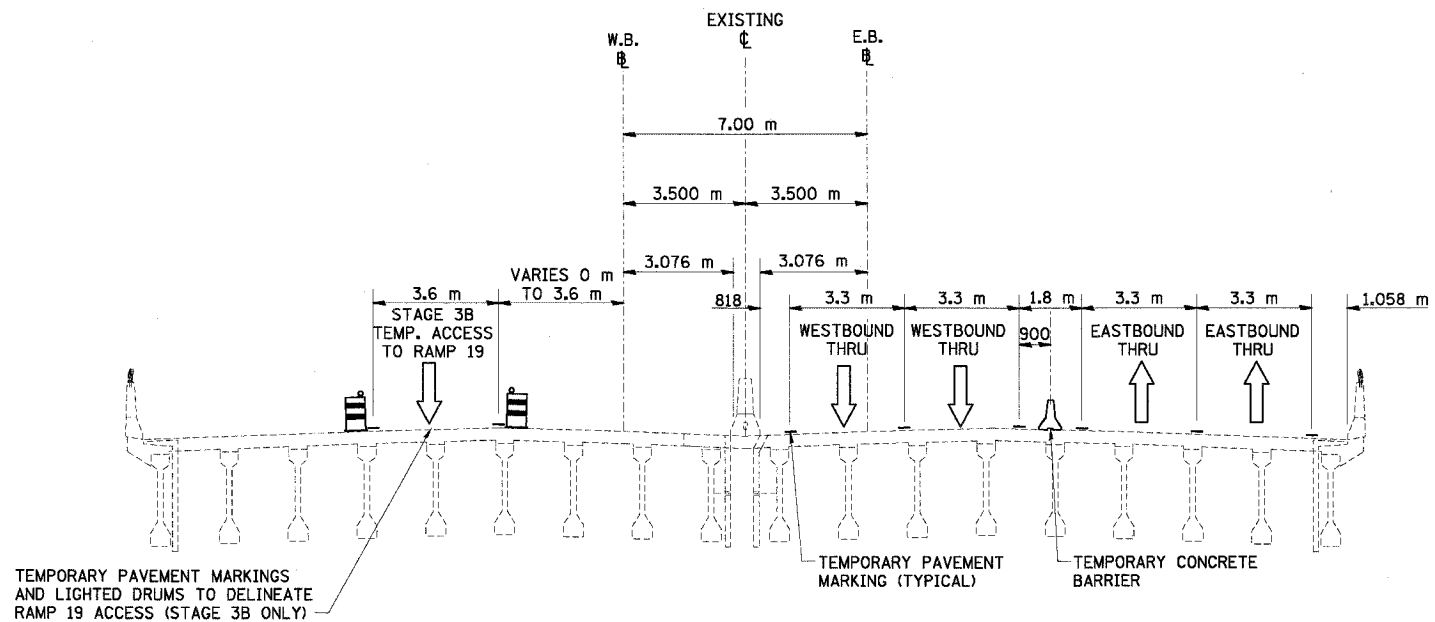


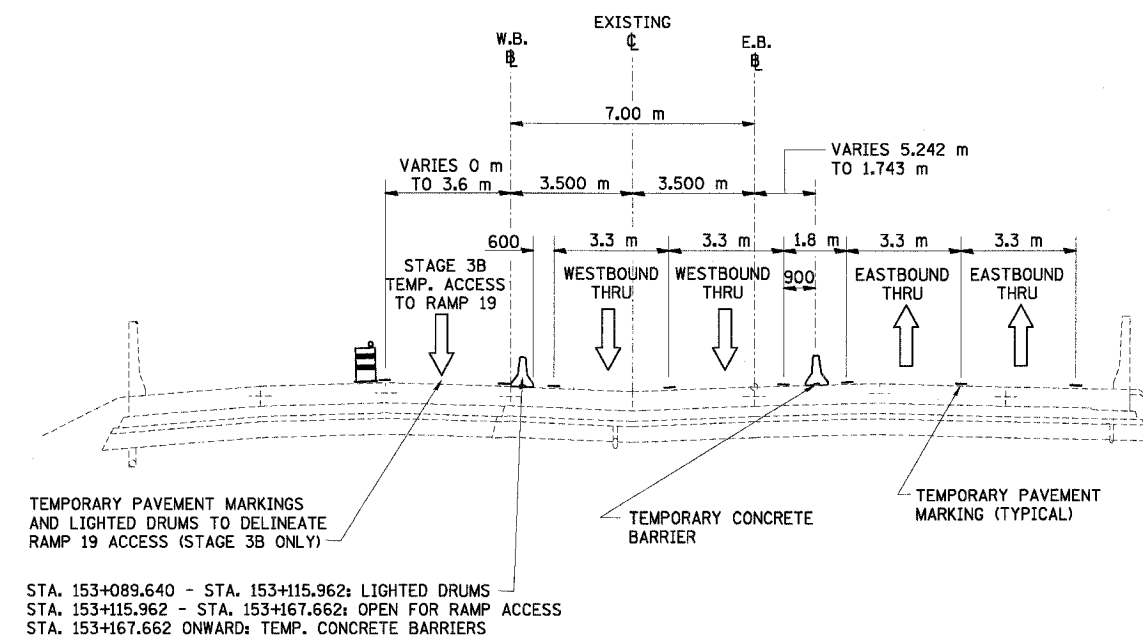
66201

F.A.I. RTE.	SECTION	COUNTY	TOTAL SHEETS	SHEET NO.
74	(90-11R-2) 90(13,14,14-1)R-1	TAZEWELL	1366	203
STA.		TO STA.		
FED. ROAD DIST. NO. 4		ILLINOIS FED. AID PROJECT		



I-74 MOT TYPICAL SECTION NO. 9
 STA. 153+012.640 TO STA. 153+089.640
 I-74 OVER MAIN STREET (US 150, IL116)

9



I-74 MOT TYPICAL SECTION NO. 10
 STA. 153+089.640 TO STA. 153+202.863

10

REVISIONS		ILLINOIS DEPARTMENT OF TRANSPORTATION F.A.I. ROUTE 74 (I-74) MAINTENANCE OF TRAFFIC STAGE 3B I-74 TYPICAL SECTIONS 9 & 10 DRAWN BY KMO CHECKED BY RTG
NAME	DATE	



DATE 12/20/2004