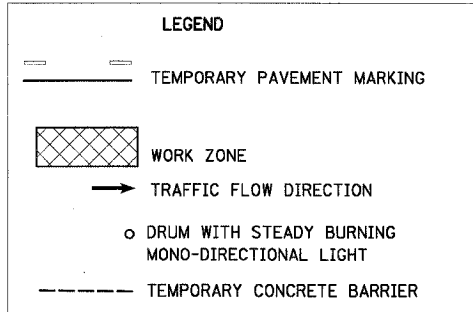


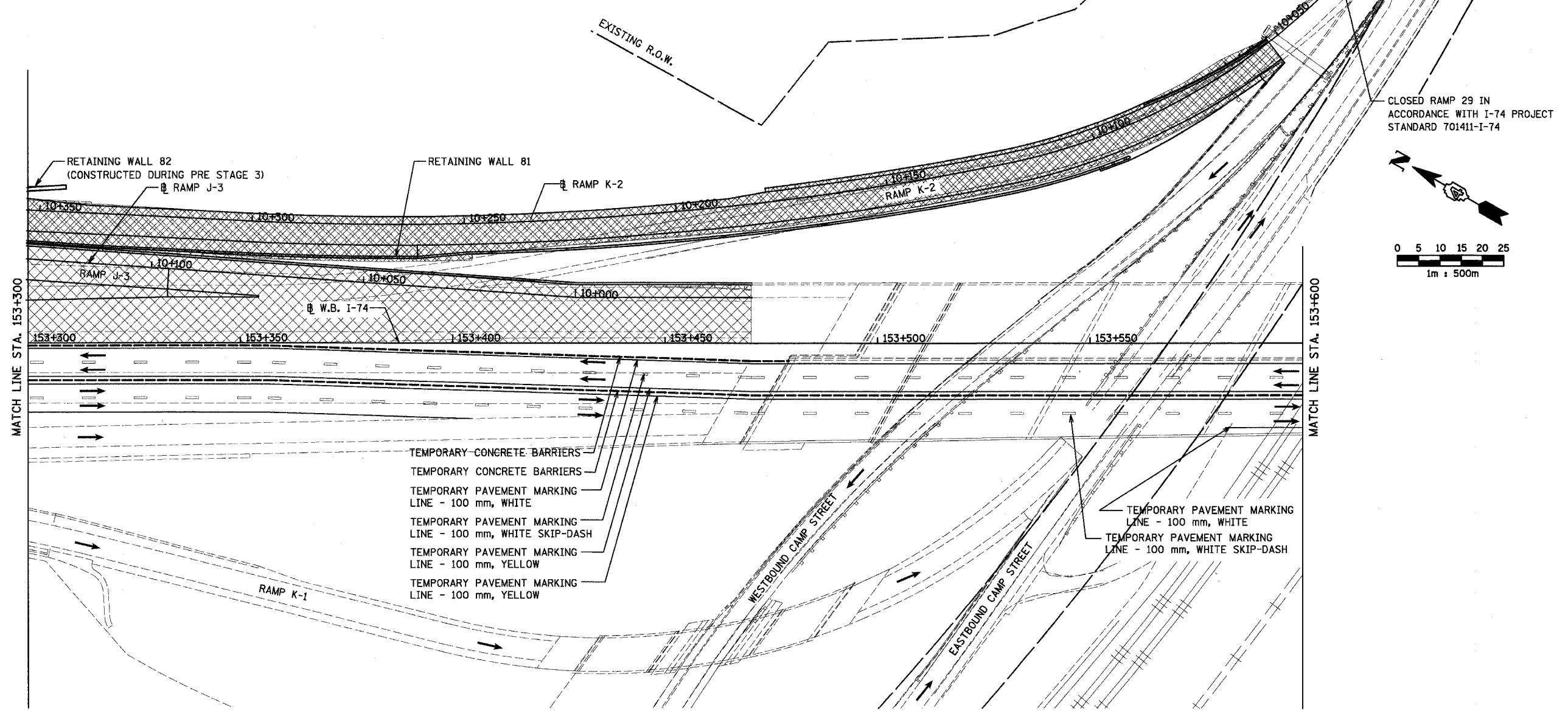
F.A.I. RTE.	SECTION	COUNTY	TOTAL SHEETS	SHEET NO.
74	(90-11)R-2 90(13,14,14-1)R-1	TAZEWELL	1366	208
STA. 153+300		TO STA. 153+600		
FED. ROAD DIST. NO. 4 ILLINOIS FED. AID PROJECT				



NOTES: MAINLINE TRAFFIC CONTROL FOR I-74 SHALL BE IN ACCORDANCE WITH STANDARD 701101 AND 701406.

SEE TEMPORARY TRAFFIC CONTROL SCHEDULE TO VERIFY LOCATION OF TEMPORARY CONCRETE BARRIERS. BARRIER WALL REFLECTORS SHALL BE INSTALLED ON ALL TEMPORARY CONCRETE BARRIER IN ACCORDANCE WITH THE SPECIAL PROVISION FOR THESE BARRIERS

SEE MOT GENERAL NOTES SHEET FOR TEMPORARY SIGNING LEGEND.



- TEMPORARY CONCRETE BARRIERS
- TEMPORARY CONCRETE BARRIERS
- TEMPORARY PAVEMENT MARKING LINE - 100 mm, WHITE
- TEMPORARY PAVEMENT MARKING LINE - 100 mm, WHITE SKIP-DASH
- TEMPORARY PAVEMENT MARKING LINE - 100 mm, YELLOW
- TEMPORARY PAVEMENT MARKING LINE - 100 mm, YELLOW

- TEMPORARY PAVEMENT MARKING LINE - 100 mm, WHITE
- TEMPORARY PAVEMENT MARKING LINE - 100 mm, WHITE SKIP-DASH

THIS MAINTENANCE OF TRAFFIC PLAN SHOWS SPECIAL TRAFFIC CONTROL IN THIS AREA. IN ADDITION TO THE SPECIAL TRAFFIC CONTROL DETAILS SHOWN, IDOT TRAFFIC CONTROL HIGHWAY STANDARDS SHALL APPLY WHERE APPLICABLE AND AS DIRECTED BY THE ENGINEER. SEE TRAFFIC NOTES ON THE CONSTRUCTION SEQUENCING SHEET FOR STAGE 3B FOR APPLICABLE IDOT HIGHWAY STANDARDS.



REVISIONS	
NAME	DATE

ILLINOIS DEPARTMENT OF TRANSPORTATION  
 F.A.I. ROUTE 74 (I-74)  
 MAINTENANCE OF TRAFFIC  
 STAGE 3B  
 STA. 153+300 TO STA. 153+600 I-74  
 DRAWN BY KMO  
 DATE 12/20/2004 CHECKED BY RTG