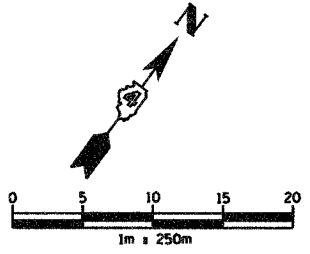
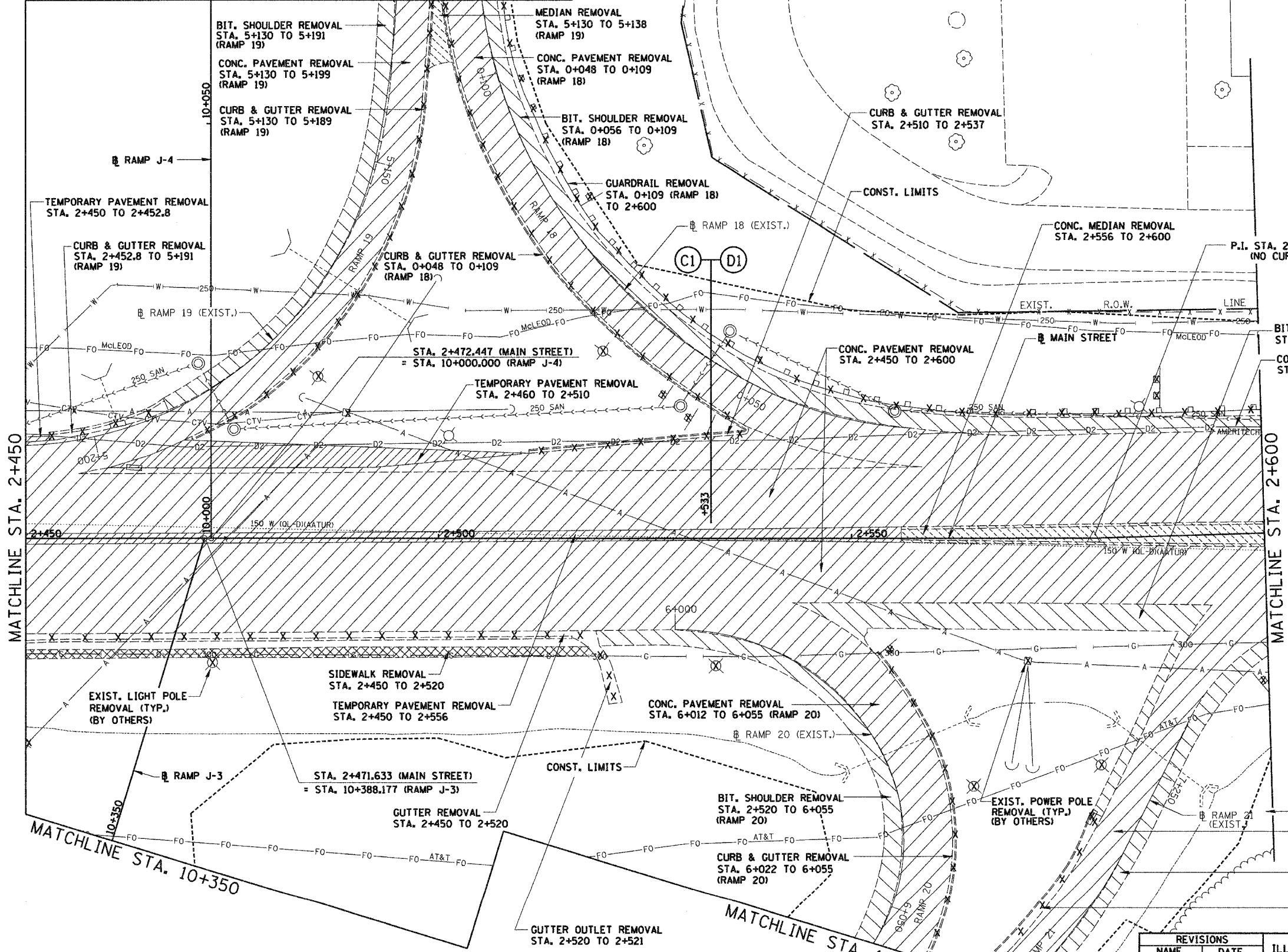


F.A.I. RTE.	SECTION	COUNTY	TOTAL SHEETS NO.	SHEET NO.
74	*	TAZEWELL	1366	220
STA. 2+450.000		TO STA. 2+600.000		
FED. ROAD DIST. NO.		ILLINOIS FED. AID PROJECT		

#(90-DR-2)9013,14,14-DR-1



MATCHLINE STA. 10+065



MATCHLINE STA. 2+450

MATCHLINE STA. 2+600

MATCHLINE STA. 10+350

MATCHLINE STA. 10+365 (RAMP J-3)

REMOVAL LEGEND

- PAVEMENT REMOVAL
- TEMPORARY PAVEMENT REMOVAL
- SHOULDER REMOVAL
- DRIVEWAY PAVEMENT REMOVAL
- SIDEWALK REMOVAL
- CURB & GUTTER REMOVAL
- GUARDRAIL REMOVAL
- BITUMINOUS SURFACE REMOVAL
- BITUMINOUS TAPER (FOR BUTT JOINTS)
- MEDIAN/ISLAND REMOVAL
- TREE REMOVAL (ha)
- TREE REMOVAL

REVISIONS	
NAME	DATE



ILLINOIS DEPARTMENT OF TRANSPORTATION
 EXISTING ROADWAY PLAN
 ILL. 116 - U.S. 150 - MAIN ST.
 STA. 2+450 TO STA. 2+600
 DRAWN BY SRS
 CHECKED BY JJM
 DATE 12-20-04

\\pds01\proj\11068-5\dwg\1217172004_9_26_04.dwg