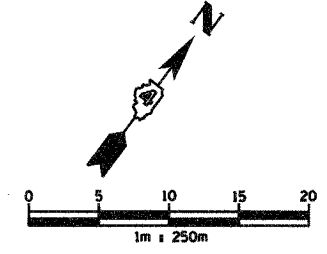


PL 99-27-5 10/02/11/21 up: ees-0111101 (tempo) (casaru)

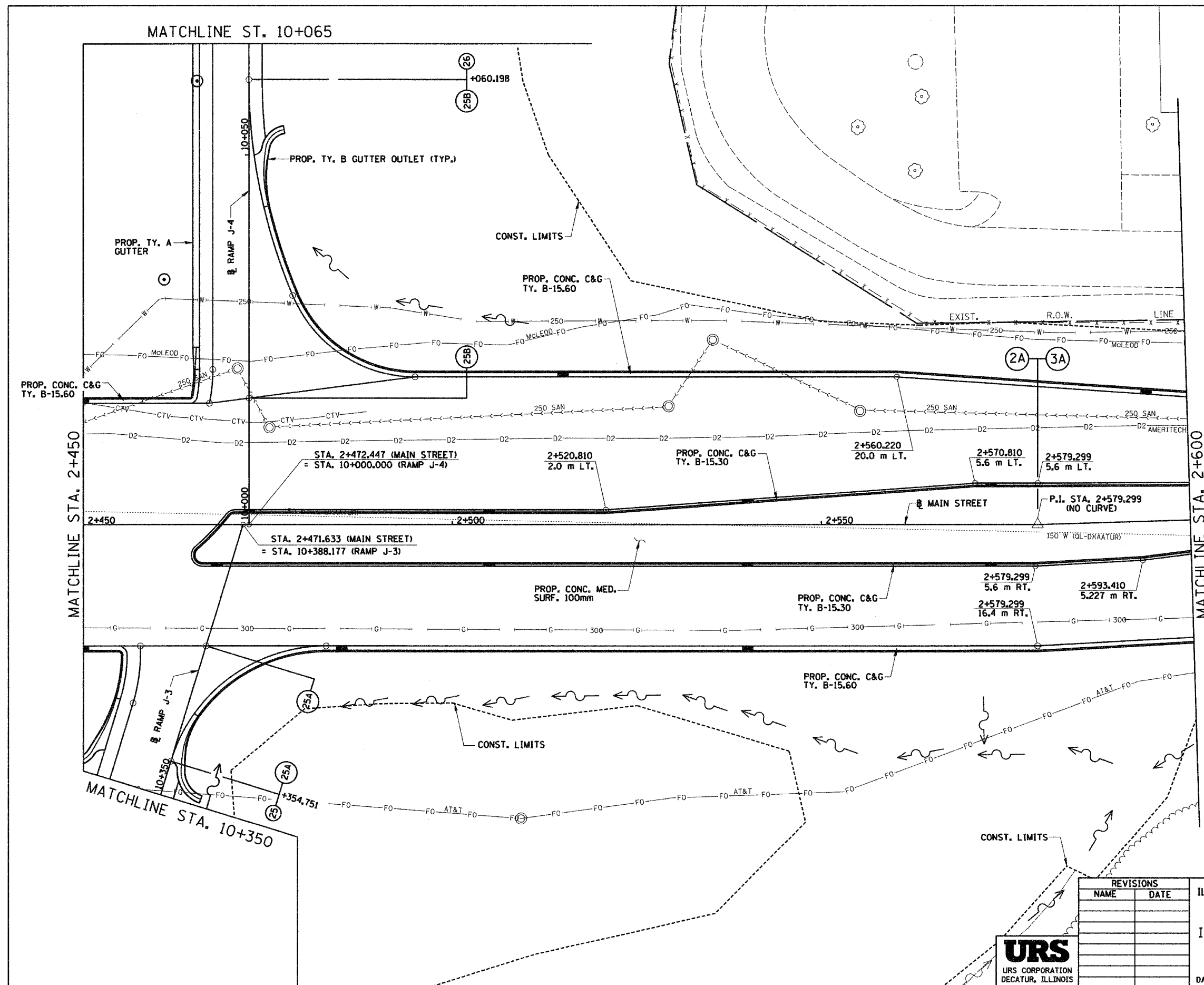
83201

F.A.I. RTE.	SECTION	COUNTY	TOTAL SHEETS	SHEET NO.
74	*	TAZEWELL	1366	222
STA. 2+450.000 TO STA. 2+600.000				
FED. ROAD DIST. NO.			ILLINOIS FED. AID PROJECT	

* (90-IDR-29003,14,14-DR-1



P.I. STA. 2+579.299
 $\Delta = 1^{\circ}43'09''$ (LT.)
 (NO CURVE)



REVISIONS	
NAME	DATE



ILLINOIS DEPARTMENT OF TRANSPORTATION
 PROPOSED ROADWAY PLAN
 ILL. 116 - U.S. 150 - MAIN ST.
 STA. 2+450 TO STA. 2+600
 DRAWN BY SRS
 CHECKED BY JJM
 DATE 12-20-04