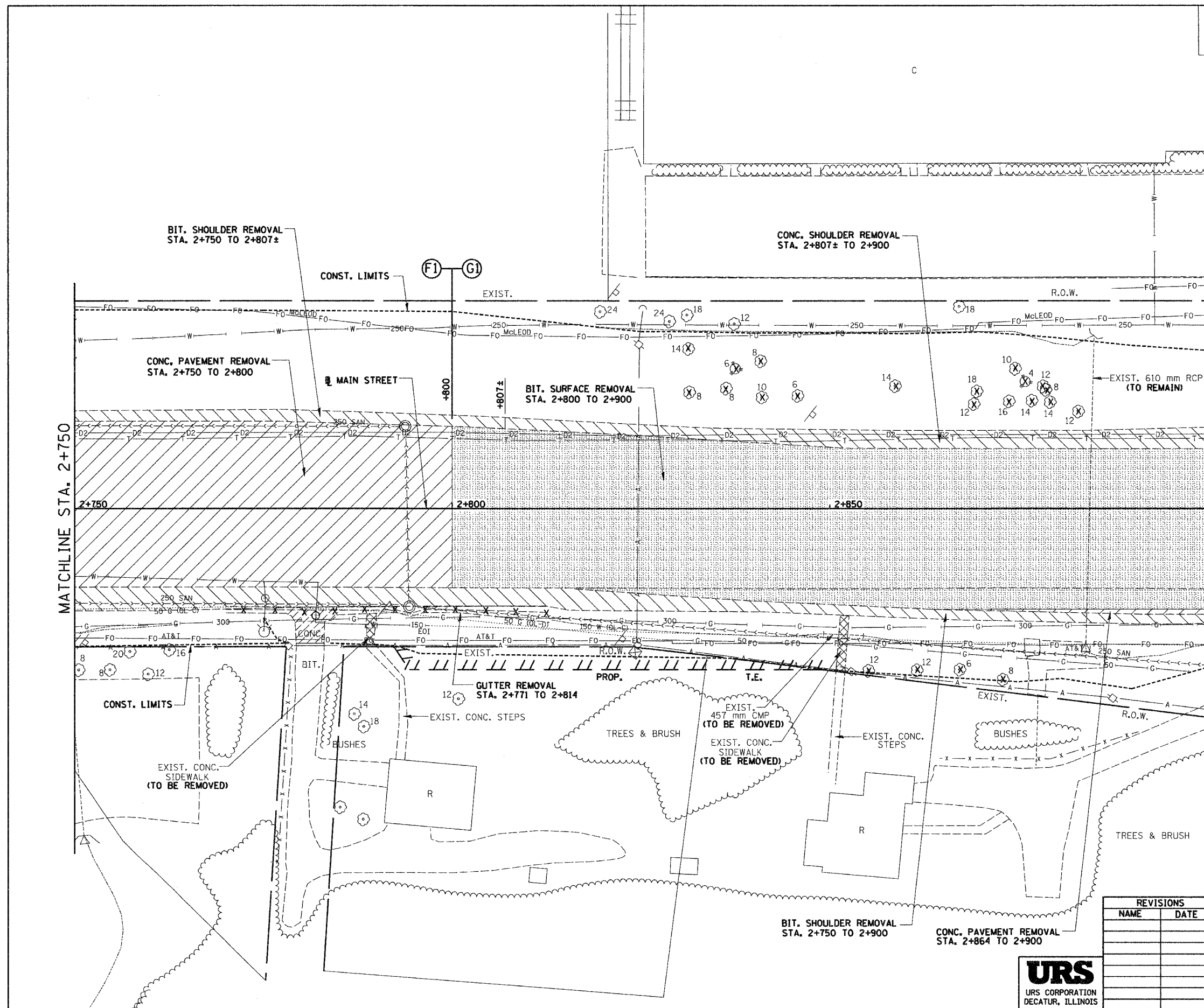
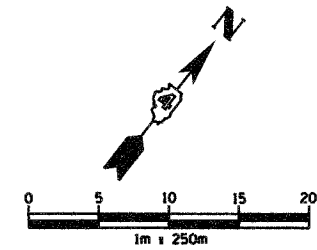


F.A.I. RTE.	SECTION	COUNTY	TOTAL SHEETS	SHEET NO.
74	*	TAZEWELL	1366	225
STA. 2+750.000 TO STA. 2+900.000				
FED. ROAD DIST. NO.			ILLINOIS FED. AID PROJECT	
*190-DR-290(13,14)-DR-1				



REMOVAL LEGEND

- PAVEMENT REMOVAL
- SHOULDER REMOVAL
- DRIVEWAY PAVEMENT REMOVAL
- SIDEWALK REMOVAL
- CURB & GUTTER REMOVAL
- GUARDRAIL REMOVAL
- BITUMINOUS SURFACE REMOVAL
- BITUMINOUS TAPER (FOR BUTT JOINTS)
- MEDIAN/ISLAND REMOVAL
- TREE REMOVAL (hd)
- TREE REMOVAL

REVISIONS	
NAME	DATE

ILLINOIS DEPARTMENT OF TRANSPORTATION
 EXISTING ROADWAY PLAN
 ILL. 116 - U.S. 150 - MAIN ST.
 STA. 2+750 TO STA. 2+900
 DRAWN BY SRS
 CHECKED BY JJM
 DATE 12-20-04



I:\projects\roadway\111111113-58m.dwg 12/17/2004 9:31:31 AM