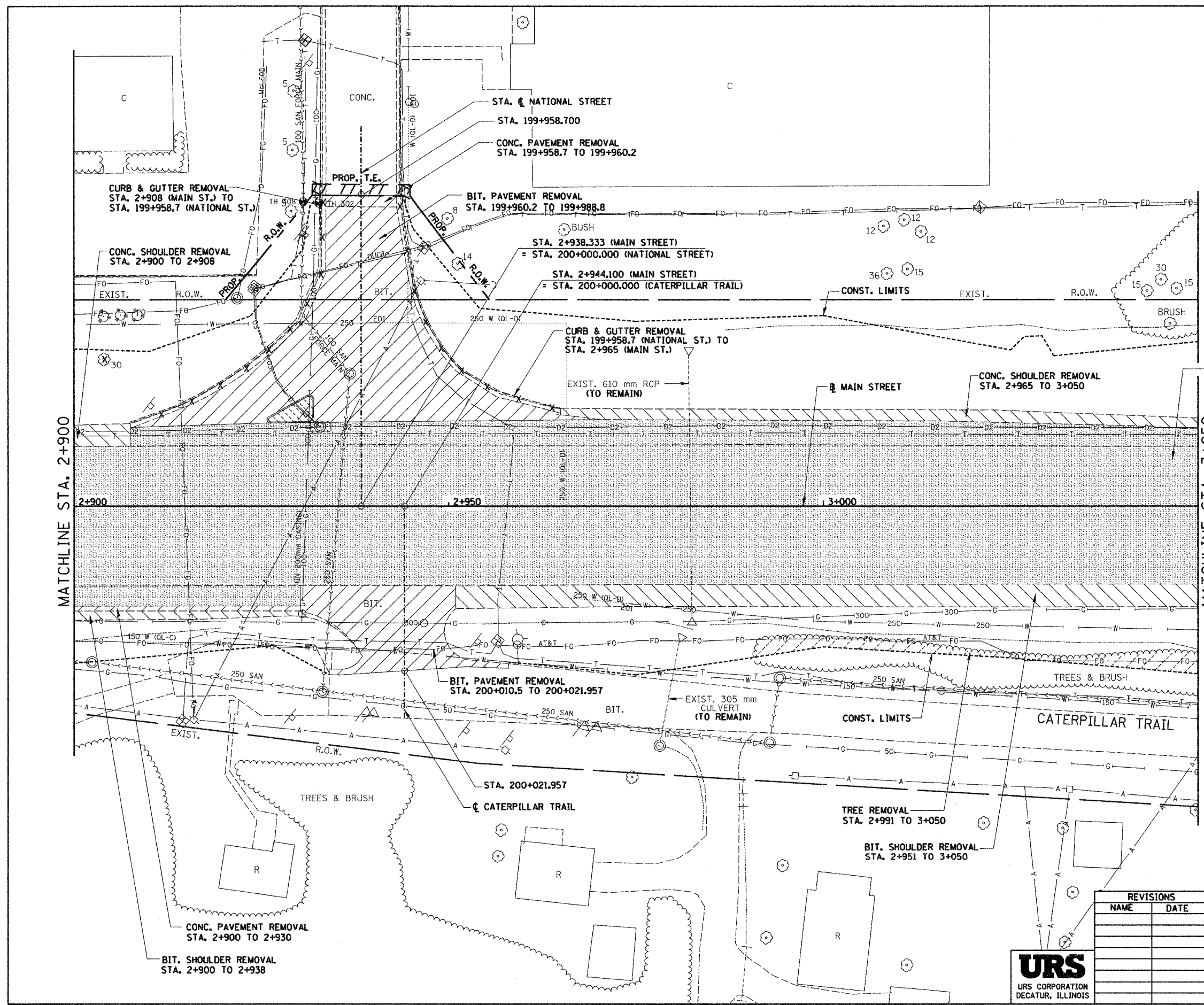
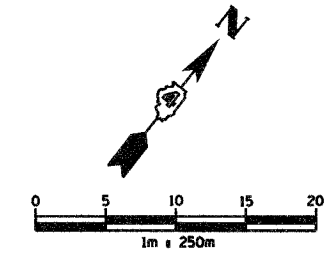


F.A.I. RTE.	SECTION	COUNTY	TOTAL SHEETS	SHEET NO.
74	*	TAZEWELL	1366	227
STA. 2+900.000		TO STA. 3+050.000		
FED. ROAD DIST. NO. ILLINOIS FED. AID PROJECT				

\*190-IDR-29013,14,14-DR-1



**REMOVAL LEGEND**

- PAVEMENT REMOVAL
- SHOULDER REMOVAL
- DRIVEWAY PAVEMENT REMOVAL
- SIDEWALK REMOVAL
- CURB & GUTTER REMOVAL
- GUARDRAIL REMOVAL
- BITUMINOUS SURFACE REMOVAL
- BITUMINOUS TAPER (FOR BUTT JOINTS)
- MEDIAN/ISLAND REMOVAL
- TREE REMOVAL (ha)
- TREE REMOVAL

REVISIONS	
NAME	DATE



ILLINOIS DEPARTMENT OF TRANSPORTATION  
 EXISTING ROADWAY PLAN  
 ILL. 116 - U.S. 150 - MAIN ST.  
 STA. 2+900 TO STA. 3+050  
 DRAWN BY SRS  
 CHECKED BY JJM  
 DATE 12-20-04

I:\projects\11115-150m\12/17/2004\_9\_35\_55.dwg  
 12/17/2004 9:35:55 AM