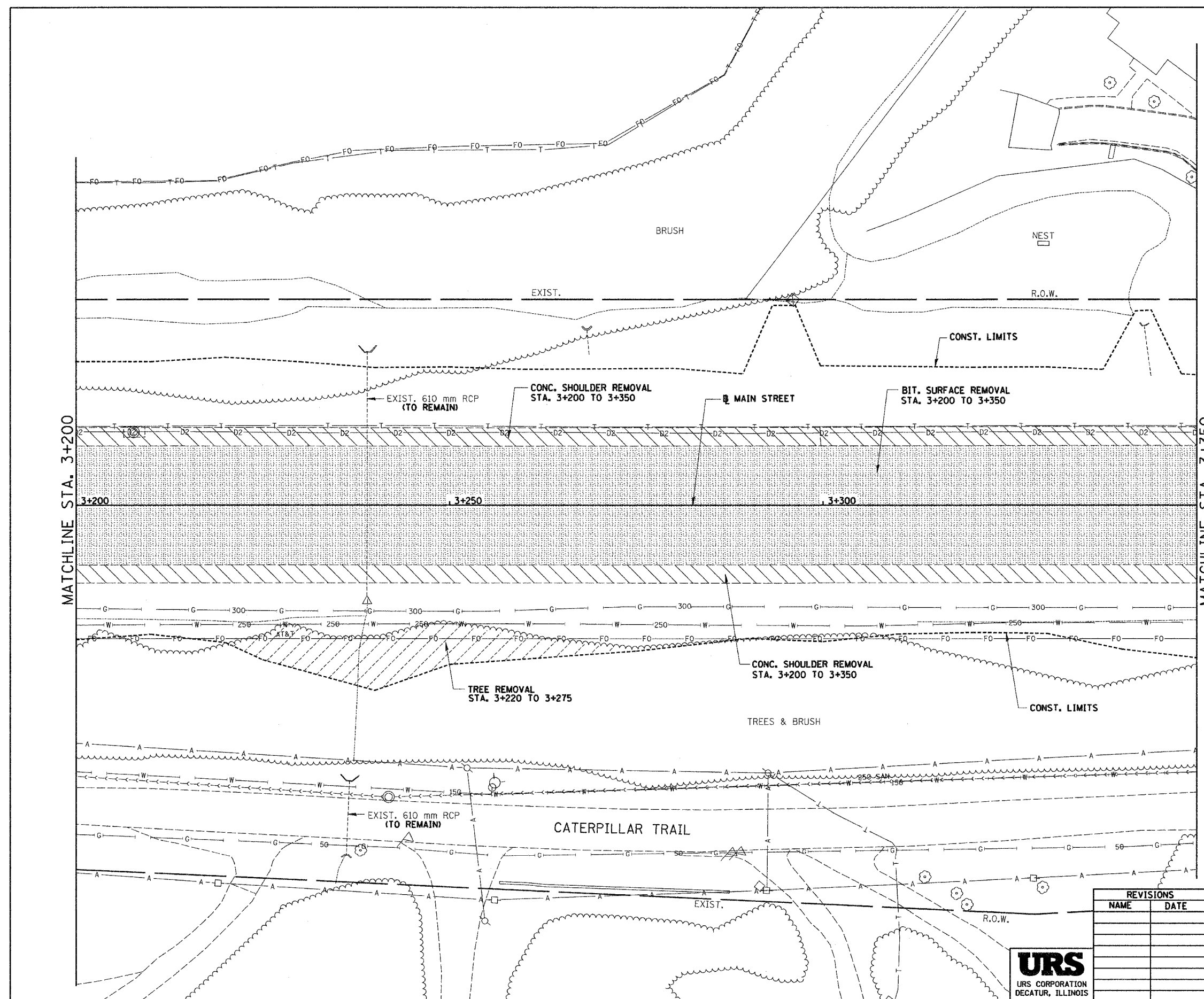
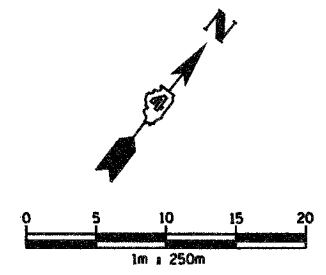


Phase2\cad\dwg\119\main.dwg 12/17/2004 9:35:08 AM

88201

F.A.I. RTE.	SECTION	COUNTY	TOTAL SHEETS	SHEET NO.
74	*	TAZEWELL	1366	231
STA. 3+200.000		TO STA. 3+350.000		
FED. ROAD DIST. NO.		ILLINOIS FED. AID PROJECT		

* (90-10R-2) 90(3) J4, 14-10R-1



REMOVAL LEGEND

- PAVEMENT REMOVAL
- SHOULDER REMOVAL
- DRIVEWAY PAVEMENT REMOVAL
- SIDEWALK REMOVAL
- CURB & GUTTER REMOVAL
- GUARDRAIL REMOVAL
- BITUMINOUS SURFACE REMOVAL
- BITUMINOUS TAPER (FOR BUTT JOINTS)
- MEDIAN/ISLAND REMOVAL
- TREE REMOVAL (hd)
- TREE REMOVAL

REVISIONS	
NAME	DATE



ILLINOIS DEPARTMENT OF TRANSPORTATION
 EXISTING ROADWAY PLAN
 ILL. 116 - U.S. 150 - MAIN ST.
 STA. 3+200 TO STA. 3+350
 DRAWN BY SRS
 CHECKED BY JJM
 DATE 12-20-04