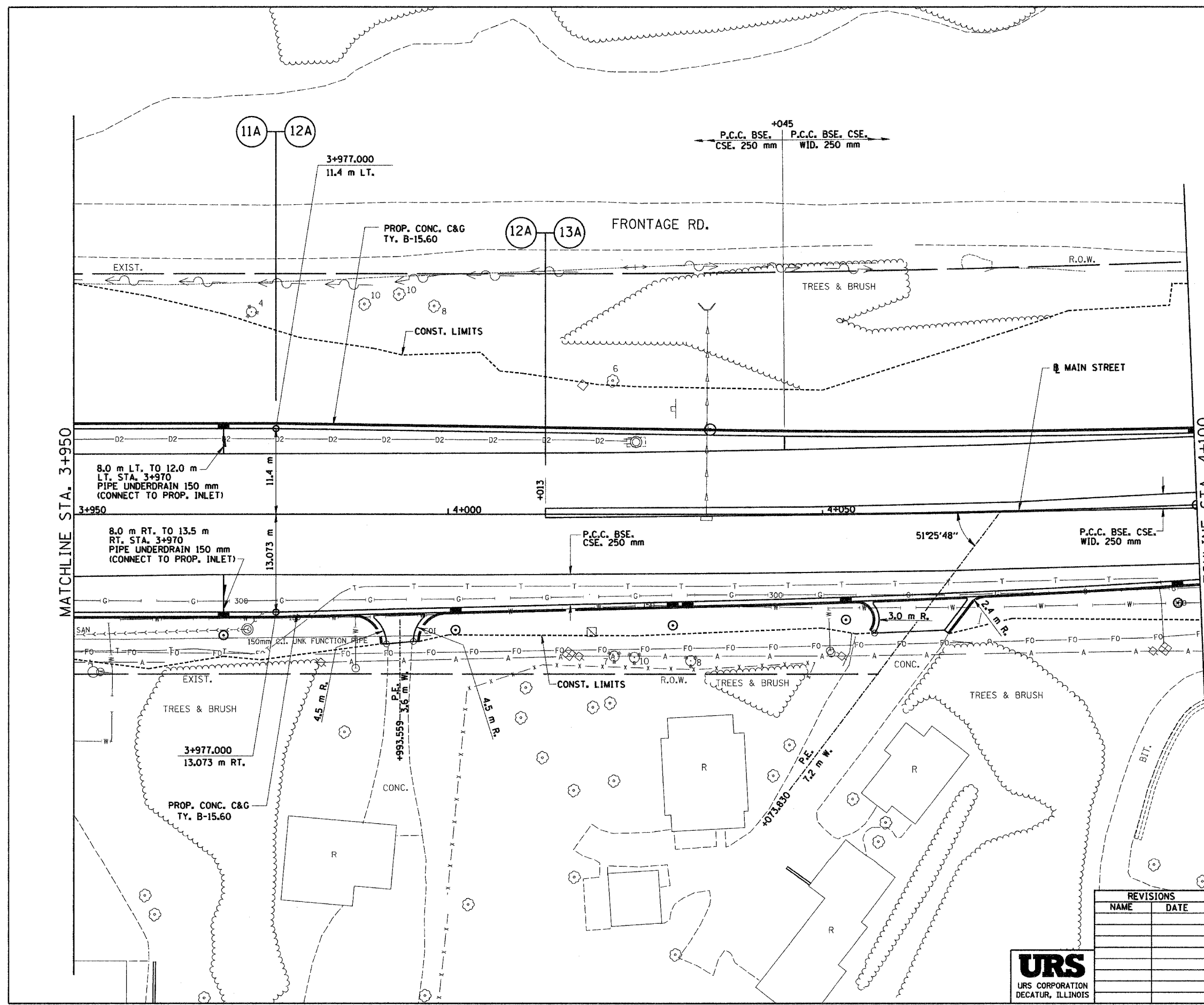
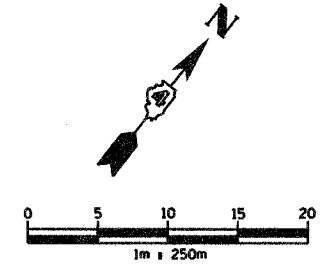


F.A.I. RTE.	SECTION	COUNTY	TOTAL SHEETS	SHEET NO.
74	*	TAZEWELL	1366	242
STA. 3+950.000		TO STA. 4+100.000		
FED. ROAD DIST. NO.		ILLINOIS FED. AID PROJECT		

*90-IDR-29013,14,14-DR-1



REVISIONS	
NAME	DATE

ILLINOIS DEPARTMENT OF TRANSPORTATION
 PROPOSED ROADWAY PLAN
 ILL. 116 - U.S. 150 - MAIN ST.
 STA. 3+950 TO STA. 4+100
 DRAWN BY SRS
 CHECKED BY JJM
 DATE 12-20-04



Phase 2/roadplan/101130-sana.dgn 12/17/2004 9:42:10 AM