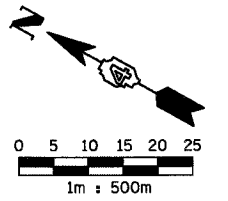
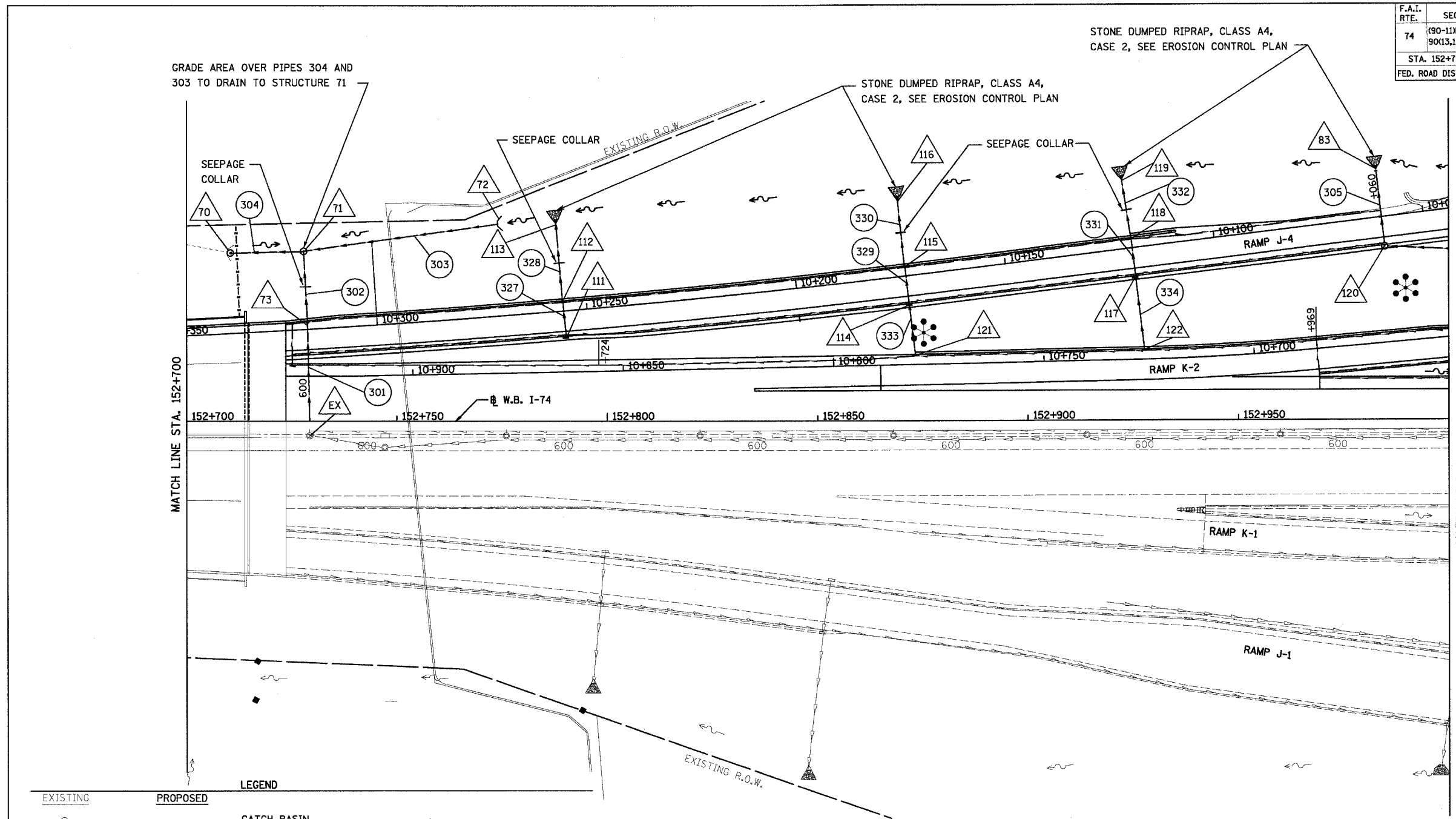


F.A.I. RTE.	SECTION	COUNTY	TOTAL SHEETS	SHEET NO.
74	(90-11R-2; 90(13,14,14-1R-1	TAZEWELL	1366	258
STA. 152+700		TO STA. 153+000		
FED. ROAD DIST. NO. 4		ILLINOIS FED. AID PROJECT		



**LEGEND**

EXISTING	PROPOSED	
○	○	CATCH BASIN
—	—	INLET
⊙	⊙	MANHOLE
◁	◁	CULVERT END SECTION
⌒	⌒	HEADWALL
✱	✱	SAG
↔	↔	SUMMIT
→	→	DITCH
~	~	DITCH FLOW
—	—	PIPE UNDERDRAIN
—	—	STORM SEWER
---	---	CULVERT LINE
△	△	STRUCTURE NUMBER
①	①	STORM SEWER PIPE NUMBER
+638	+638	UNDERDRAIN OUTLET
⊙	⊙	HIGH MAST LIGHTING (SEE LIGHTING PLANS)

**NOTES:**  
 1. FOR UNDERDRAIN INFORMATION SEE SCHEDULE OF QUANTITIES  
 2. WATER ELEVATION 136.180 BORING NO. RJ4-2 STATION 10+421 OFFSET 18M RT

**PROPOSED DRAINAGE SHEET 2 OF 5**

REVISIONS	
NAME	DATE

ILLINOIS DEPARTMENT OF TRANSPORTATION  
 F.A.I. ROUTE 74 (I-74)  
**DRAINAGE AND UTILITY PLAN**  
 STA. 152+700 TO STA. 153+000 W.B. I-74

DRAWN BY RTG  
 CHECKED BY RTG

DATE 12-20-2004

