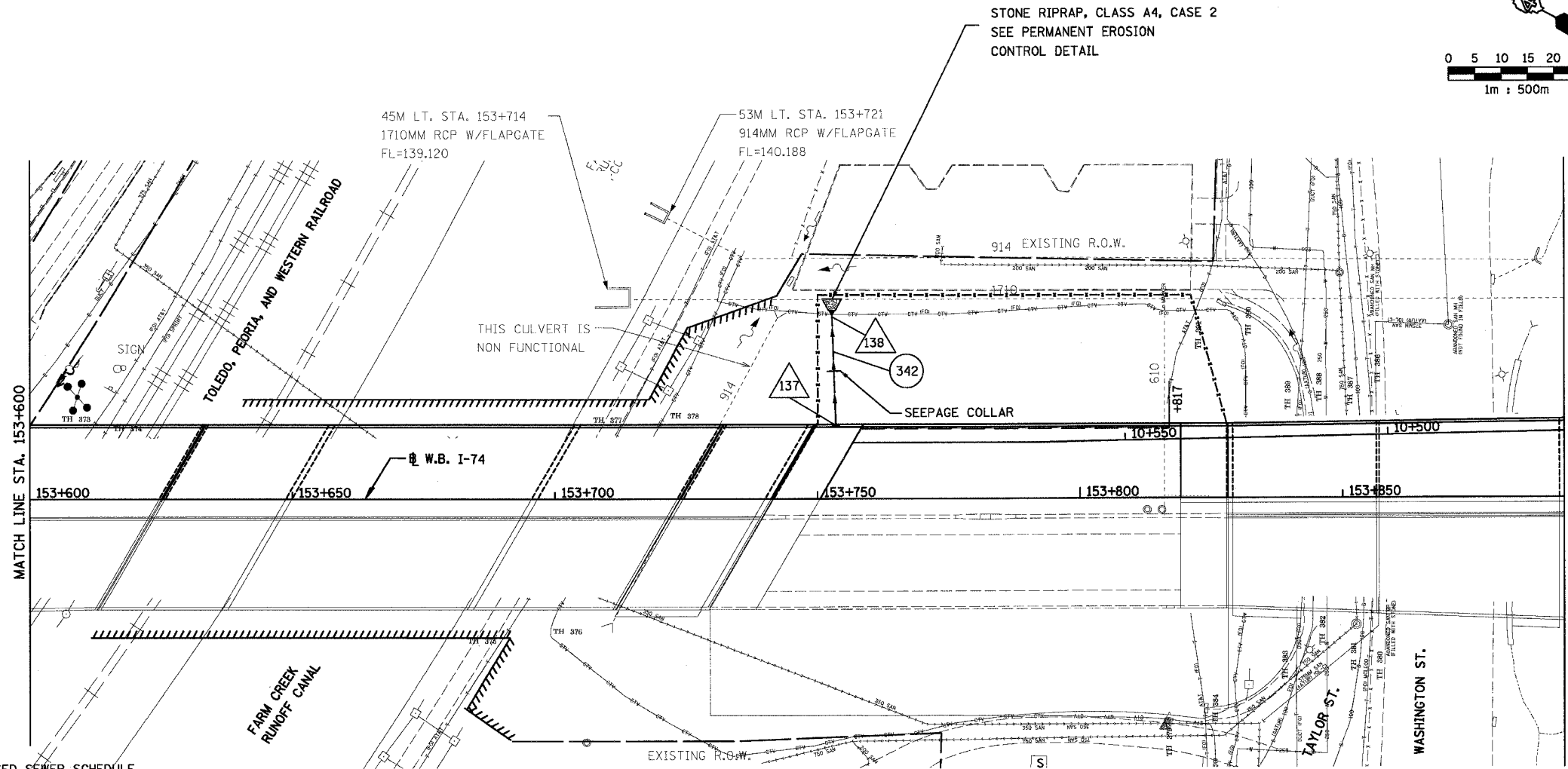
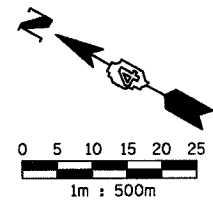


F.A.I. RTE.	SECTION	COUNTY	TOTAL SHEETS	SHEET NO.
74	190-11R-2; 90(13,14,14-1R-1	TAZEWELL	1366	267
STA. 153+600		TO STA. 153+892.180		
FED. ROAD DIST. NO. 4		ILLINOIS FED. AID PROJECT		



PROPOSED SEWER SCHEDULE

PIPE NO.	342
U/S-D/S	137 - 138
LENGTH (m)	23.5
SIZE (mm)	300
TYPE/CLASS	PIPE DRAIN
T.B. (m ³)	1
REMARKS	1 S.C.

S.C. = SEEPAGE COLLAR

DRAINAGE STRUCTURE SCHEDULE

STRUCTURE NO.	137	138
STATION	153+754	153+754
OFFSET	13.8 LT	34.9 LT
TYPE	BRIDGE APPROACH	METAL END SECTION
F & G	TYPE D	-
RIM EL.	153.042	-
INV N.	-	-
INV SE.	-	-
INV NE.	152.432	-
INV NW.	-	-
INV SW.	-	142.087
STANDARD	609006	542401
REMARKS		

LEGEND

EXISTING	PROPOSED	DESCRIPTION
○	○	CATCH BASIN
	-	INLET
⊙	⊙	MANHOLE
△	△	CULVERT END SECTION
))	HEADWALL
~	~	SAG
↔	↔	SUMMIT
→	→	DITCH
~>	~>	DITCH FLOW
— —	— —	PIPE UNDERDRAIN
— —	— —	STORM SEWER
---	---	CULVERT LINE
△	△	STRUCTURE NUMBER
①	①	STORM SEWER PIPE NUMBER
+638	+638	UNDERDRAIN OUTLET
*	*	HIGH MAST LIGHTING (SEE LIGHTING PLANS)

NOTE: FOR UNDERDRAIN INFORMATION SEE SCHEDULE OF QUANTITIES

PROPOSED DRAINAGE SHEET 5 OF 5

REVISIONS

NAME	DATE

ILLINOIS DEPARTMENT OF TRANSPORTATION
F.A.I. ROUTE 74 (I-74)
DRAINAGE AND UTILITY PLAN
STA 153+600 TO STA 153+892.180 E.B. I-74



DATE 12-20-2004
DRAWN BY RTG
CHECKED BY RTG