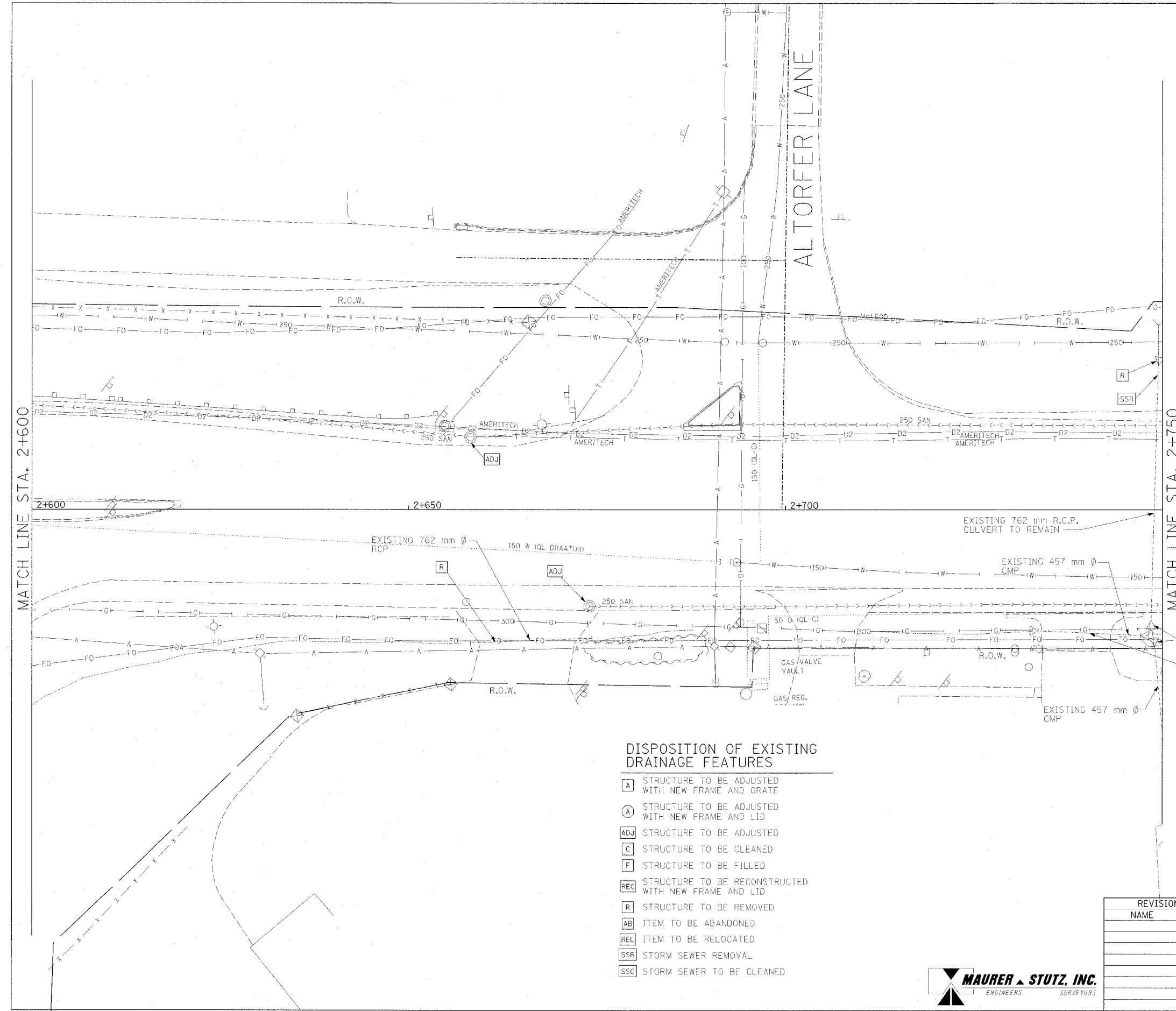
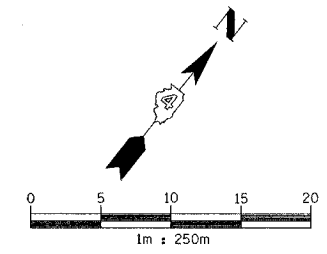


F.A.I. RTE.	SECTION	COUNTY	TOTAL SHEETS	SHEET NO.
74	*	TAZEWELL	136	276
STA. 2+600,000		TO STA. 2+750,000		
FED. ROAD DIST. NO. 4 ILLINOIS FED. AID PROJECT				
* (90-111R-2;90113,14,14-11R-1				



**EXISTING DRAINAGE AND UTILITY LEGEND**

	OVERHEAD ELECTRIC
	STORM SEWER
	SANITARY SEWER
	CULVERT PIPE
	TRENCH DRAIN
	UNDERGROUND TELEPHONE
	UNDERGROUND FIBER OPTIC
	UNDERGROUND COMMUNICATIONS DUCT
	UNDERGROUND WATER MAIN
	UNDERGROUND GAS MAIN
	HEADWALL
	INLET
	CONC END SECTION
	UTILITY MANHOLE
	ELECTRIC/TELEPHONE SPLICE BOX
	TRAFFIC SIGNAL HANDHOLE
	POWER POLE
	TELEPHONE POLE
	HIGH MAST LIGHT
	ABOVE GROUND TRANSFORMER
	WATER VALVE OR UTIL. BOX
	FIRE HYDRANT
	RAILROAD SWITCH
	RAILROAD SIGNAL
	FIBER OPTIC JUNCTION BOX

**DISPOSITION OF EXISTING DRAINAGE FEATURES**

- A** STRUCTURE TO BE ADJUSTED WITH NEW FRAME AND GRATE
- A** STRUCTURE TO BE ADJUSTED WITH NEW FRAME AND LID
- ADJ** STRUCTURE TO BE ADJUSTED
- C** STRUCTURE TO BE CLEANED
- F** STRUCTURE TO BE FILLED
- REC** STRUCTURE TO BE RECONSTRUCTED WITH NEW FRAME AND LID
- R** STRUCTURE TO BE REMOVED
- AB** ITEM TO BE ABANDONED
- REL** ITEM TO BE RELOCATED
- SSR** STORM SEWER REMOVAL
- SSC** STORM SEWER TO BE CLEANED

REVISIONS	
NAME	DATE

EXISTING CONDITIONS

ILLINOIS DEPARTMENT OF TRANSPORTATION

**DRAINAGE AND UTILITY PLAN**

**MAIN STREET**

STA 2+600 TO 2+750

DATE 12/20/04

DRAWN BY JAM  
CHECKED BY MJS

