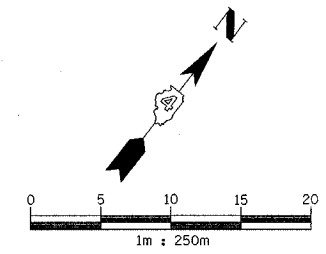
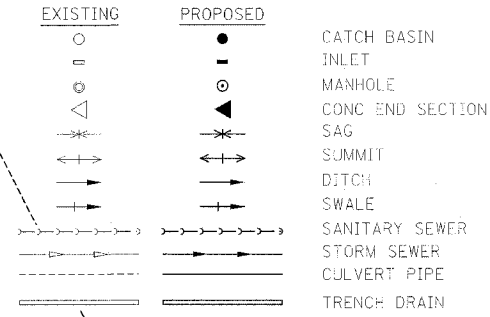


F.A.I. RTE.	SECTION	COUNTY	TOTAL SHEETS	SHEET NO.
74		TAZEWELL	1366	277
STA. 2+600.000		TO STA. 2+750.000		
FED. ROAD DIST. NO. 4		ILLINOIS FED. AID PROJECT		
• (90-111)R-2-90(13,14,14-1)R-1				

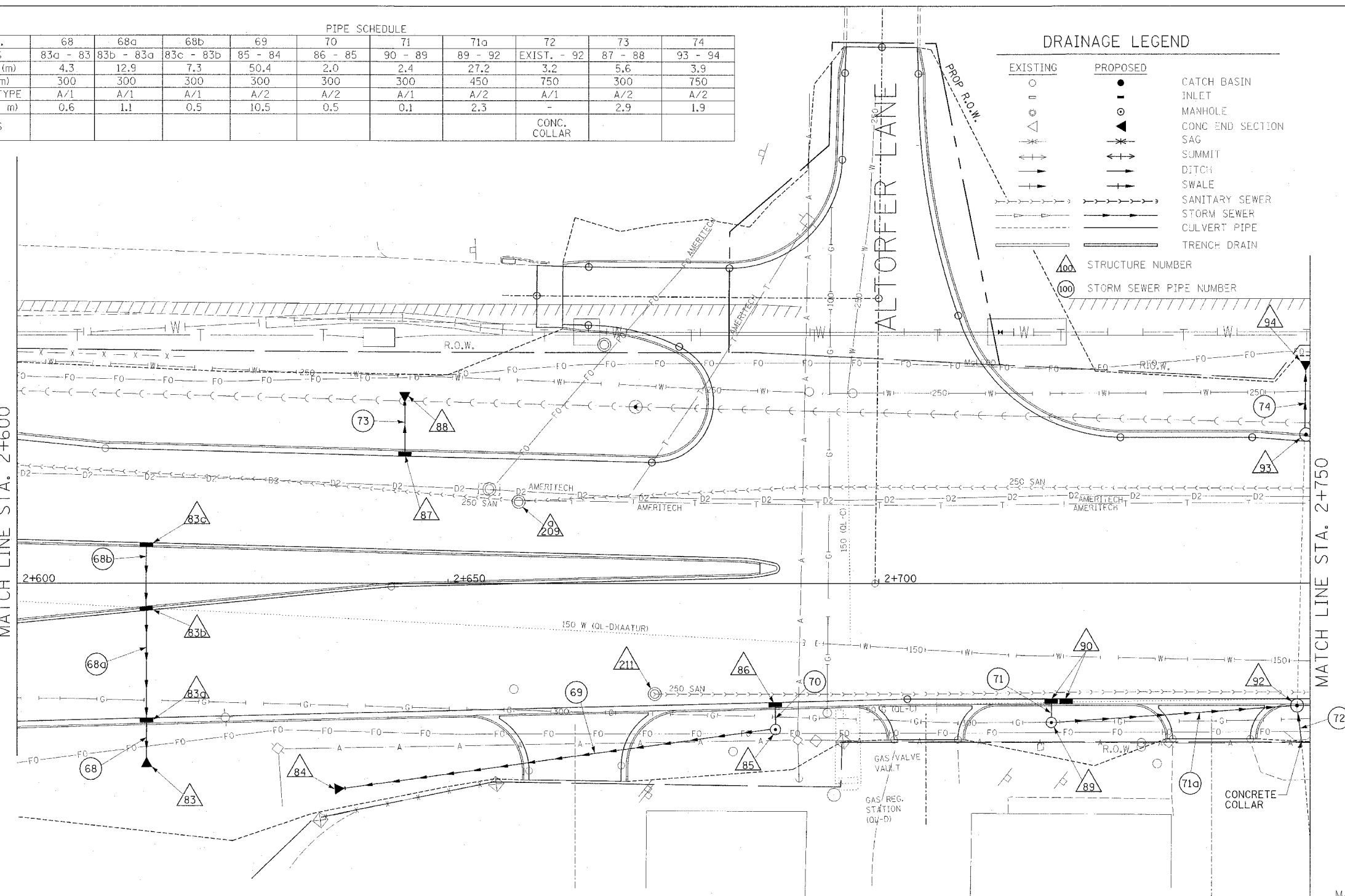
PIPE NO.	68	68a	68b	69	PIPE SCHEDULE				71a	72	73	74
U/S-D/S	83a - 83	83b - 83a	83c - 83b	85 - 84	86 - 85	90 - 89	89 - 92	EXIST. - 92	87 - 88	93 - 94		
LENGTH (m)	4.3	12.9	7.3	50.4	2.0	2.4	27.2	3.2	5.6	3.9		
SIZE (mm)	300	300	300	300	300	300	450	750	300	750		
CLASS/TYP	A/1	A/1	A/1	A/2	A/2	A/1	A/2	A/1	A/2	A/2		
T.B. (cu m)	0.6	1.1	0.5	10.5	0.5	0.1	2.3	-	2.9	1.9		
REMARKS								CONC. COLLAR				

DRAINAGE LEGEND



MATCH LINE STA. 2+600

MATCH LINE STA. 2+750



STRUCTURE SCHEDULE

STRUCTURE NO.	83	83a	83b	83c	84	85	86	87	88	89	90	92	93	94
STATION	2+615.000	2+615.000	2+615.000	2+615.000	2+638.000	2+688.000	2+688.000	2+645.000	2+720.000	2+721.739	2+748.560	2+749.400	2+749.500	
OFFSET	20.770 R	15.493 R	3.135 R	4.708 L	19.500 R	16.780 R	13.683 R	14.766 L	23.000 L	16.000 R	13.300 R	13.300 R	13.300 R	16.490 L
TYPE	300mm PRC FLARED	INL G-1 SPECIAL	INL G-1 SPECIAL	INL G-1 SPECIAL	300mm PRC FLARED	MH TY A 1.2m	INL G-1 SPE	INL G-1 SPE	300mm PRC FLARED	MH TY A 1.2m	INL G-1 DOUBLE SPECIAL	INL MH G-1 SPE 1.5m	INL MH G-1 SPE 1.5m	750mm PRC FLARED
F & G	END SECTION	DIAGONAL	DIAGONAL	DIAGONAL	END SECTION	TY 1 CL	DIAGONAL	DIAGONAL	END SECTION	TY 1 CL	DIAGONAL	DIAGONAL	DIAGONAL	END SECTION
CONTROL EL.	-	144.432	144.693	144.661	-	145.150	144.839	144.605	-	144.900	144.785	144.785	144.653	144.568
INV NW.	-	143.630	144.000	-	-	143.830	-	141.000	-	143.880	-	-	-	142.210
INV SE.	143.066	143.200	143.890	144.060	-	-	143.840	-	-	143.900	-	143.440	142.210	-
INV NE.	-	-	-	-	-	-	-	-	-	143.730	-	-	-	-
INV SW.	-	-	-	-	143.200	143.680	-	-	-	-	143.910	143.590	-	-
INV N.	-	-	-	-	-	-	-	-	-	-	-	-	-	-
INV S.	-	-	-	-	-	-	-	-	-	-	-	-	-	-
INV E.	-	-	-	-	-	-	-	-	-	-	-	-	-	-
INV W.	-	-	-	-	-	-	-	-	-	-	-	-	-	-
REMARKS	-	-	-	-	-	-	-	-	-	-	-	BUILD OVER EXIST PIPE	BUILD OVER EXIST PIPE	-

MANHOLES TO BE ADJUSTED

STRUCTURE NO.	211	209a
STATION	2+673.988	2+658.190
OFFSET	12.700 R	9.489 L
EXISTING RIM ELEVATION	144.606	144.606
PROPOSED RIM ELEVATION	144.823	144.829
REMARKS	NOTE 1	NOTE 1

NOTE 1: FOR INFORMATION ONLY

REVISIONS	
NAME	DATE

PROPOSED IMPROVEMENT  
 ILLINOIS DEPARTMENT OF TRANSPORTATION  
 DRAINAGE AND UTILITY PLAN  
 MAIN STREET  
 STA 2+600 TO 2+750  
 DRAWN BY JAM  
 CHECKED BY MJS  
 DATE 12/20/04

