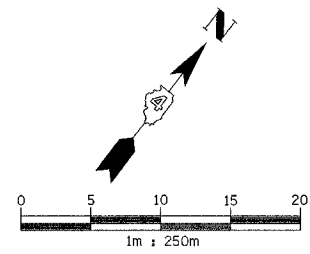
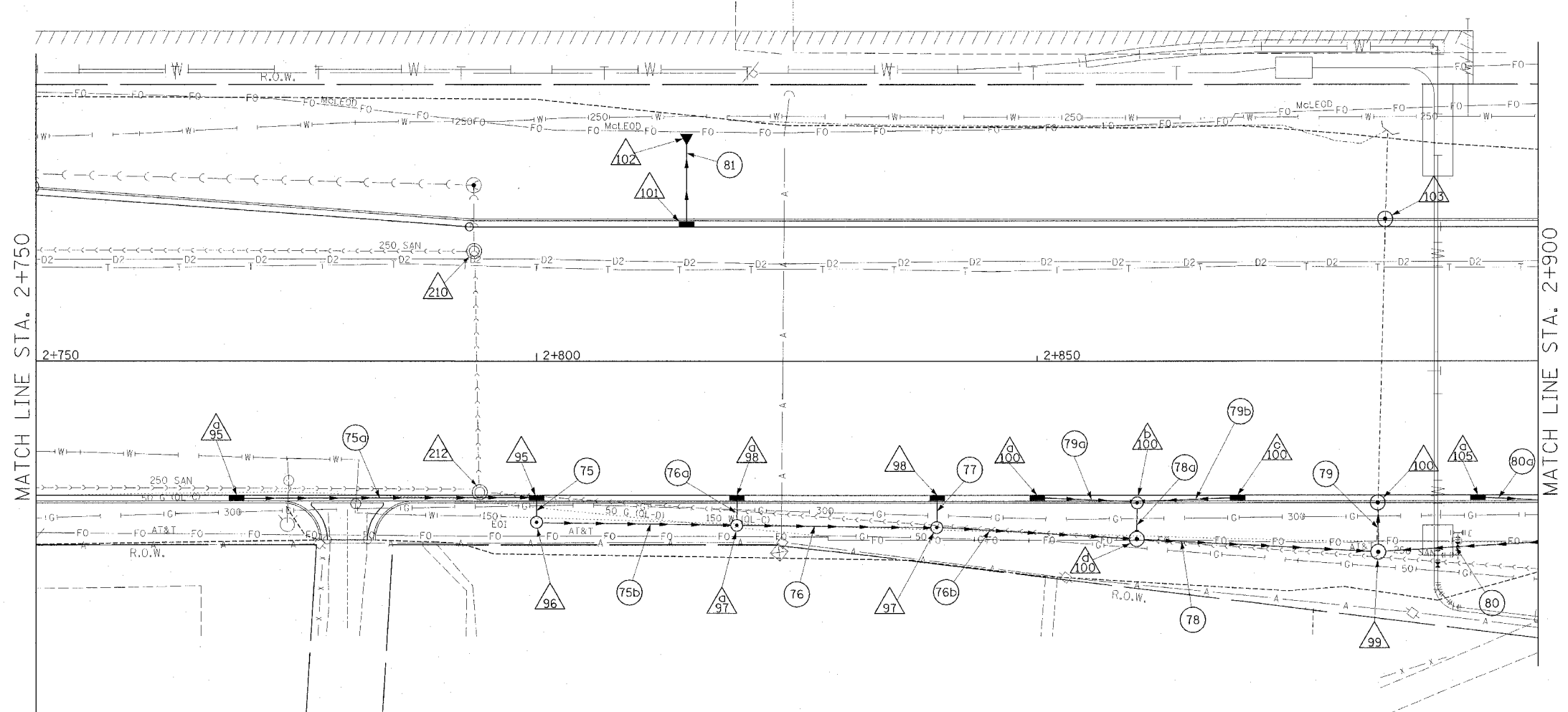


F.A.I. RTE.	SECTION	COUNTY	TOTAL SHEETS	SHEET NO.
T4		TAZEWELL	1366	279
STA. 2+750.000		TO STA. 2+900.000		
FED. ROAD DIST. NO. 4 ILLINOIS FED. AID PROJECT				
• (90-11R-2)90(13,14,14-1)R-1				



STRUCTURE NO.	95	95a	96	97	97a	98	98a	99	100	100a	100b	100c	100d	101	102	103	105a
STATION	2+800.000	2+770.000	2+800.000	2+840.000	2+820.000	2+840.000	2+820.000	2+884.000	2+884.050	2+850.000	2+860.000	2+870.000	2+860.000	2+815.000	2+815.000	2+884.750	2+894.000
OFFSET	13.300 R	13.300 R	16.000 R	16.500 R	16.311 R	13.300 R	13.300 R	19.000 R	13.300 R	13.300 R	13.300 R	13.300 R	17.690 R	13.300 L	21.385 L	13.300 L	13.300 R
TYPE	INL G-1 SPE	INL G-1 SPE	MH TY A 1.2m	MH TY A 1.2m	MH TY A 1.2m	INL G-1 SPE	INL G-1 SPE	MH TY A 1.5m	INL MH G-1 SPE 1.5m	INL G-1 SPE	INL MH G-1 SPE 1.2m	INL G-1 SPE	MH TY A 1.5m	INL G-1 SPE	300mm PRC FLARED	INL MH G-1 SPE 1.5m	INL G-1 SPE
F & G	DIAGONAL	DIAGONAL	TY 1 CL	TY 1 CL	TY 1 CL	DIAGONAL	DIAGONAL	TY 1 CL	DIAGONAL	DIAGONAL	DIAGONAL	DIAGONAL	TY 1 CL	DIAGONAL	END SECTION	DIAGONAL	DIAGONAL
CONTROL EL.	144.409	144.551	145.200	144.500	144.500	144.247	144.343	144.300	144.036	144.194	144.149	144.104	144.500	144.359	-	144.031	143.986
INV NW.	-	-	143.360	143.220	143.260	-	-	142.660	142.278	-	-	-	143.030	140.300	140.200	139.995	-
INV SE.	143.380	-	-	-	-	143.260	143.380	-	142.278	-	-	-	143.110	-	-	139.995	-
INV NE.	-	143.680	143.360	143.070	143.110	-	-	142.660	-	143.360	-	-	143.260	-	-	-	143.200
INV SW.	143.380	-	-	143.070	143.260	-	-	142.660	-	-	143.260	143.360	143.030	-	-	-	-
INV N.	-	-	-	-	-	-	-	-	-	-	-	-	-	-	-	-	-
INV S.	-	-	-	-	-	-	-	-	-	-	-	-	-	-	-	-	-
INV E.	-	-	-	-	-	-	-	-	-	-	-	-	-	-	-	-	-
INV W.	-	-	-	-	-	-	-	-	-	-	-	-	-	-	-	-	-
REMARKS	-	-	-	-	-	-	-	-	BUILD OVER EXIST PIPE	-	-	-	-	-	-	BUILD OVER EXIST PIPE	-



PIPE NO.	75	75a	75b	76	76a	76b	77	78	78a	79	79a	79b	80	80a	81
U/S-D/S	95 - 96	95a - 95	96 - 97a	97a - 97	98a - 97a	97 - 100d	98 - 97	100d - 99	100b - 100d	99 - 100	100a - 100b	100c - 100b	105d - 99	105a - 105b	101 - 102
LENGTH (m)	2.5	27.0	23.0	20.0	2.8	20.0	3.0	24.0	3.6	5.5	10.0	10.0	18.9	9.0	7.4
SIZE (mm)	300	300	300	450	300	450	300	600	450	600	300	300	600	300	300
CLASS/TYPE	A/2	A/1	A/2	A/1	A/1	A/2	A/1	A/2	A/2	A/2	A/1	A/1	A/1	A/1	A/3
T.B. (cu m)	0.6	5.4	-	-	0.5	-	0.5	-	0.6	0	2.5	2.1	-	1.3	3.3
REMARKS															

STRUCTURE NO.	210	212
STATION	2+793.775	2+794.324
OFFSET	10.912 L	12.987 R
EXISTING RIM ELEVATION	144.463	144.393
PROPOSED RIM ELEVATION	144.403	144.436
REMARKS	NOTE 1	NOTE 1

NOTE 1: FOR INFORMATION ONLY

PROPOSED IMPROVEMENT

ILLINOIS DEPARTMENT OF TRANSPORTATION
 DRAINAGE AND UTILITY PLAN
 MAIN STREET
 STA 2+750 TO 2+900

REVISIONS	
NAME	DATE

DATE 12/20/04
 DRAWN BY JAM
 CHECKED BY MJS

