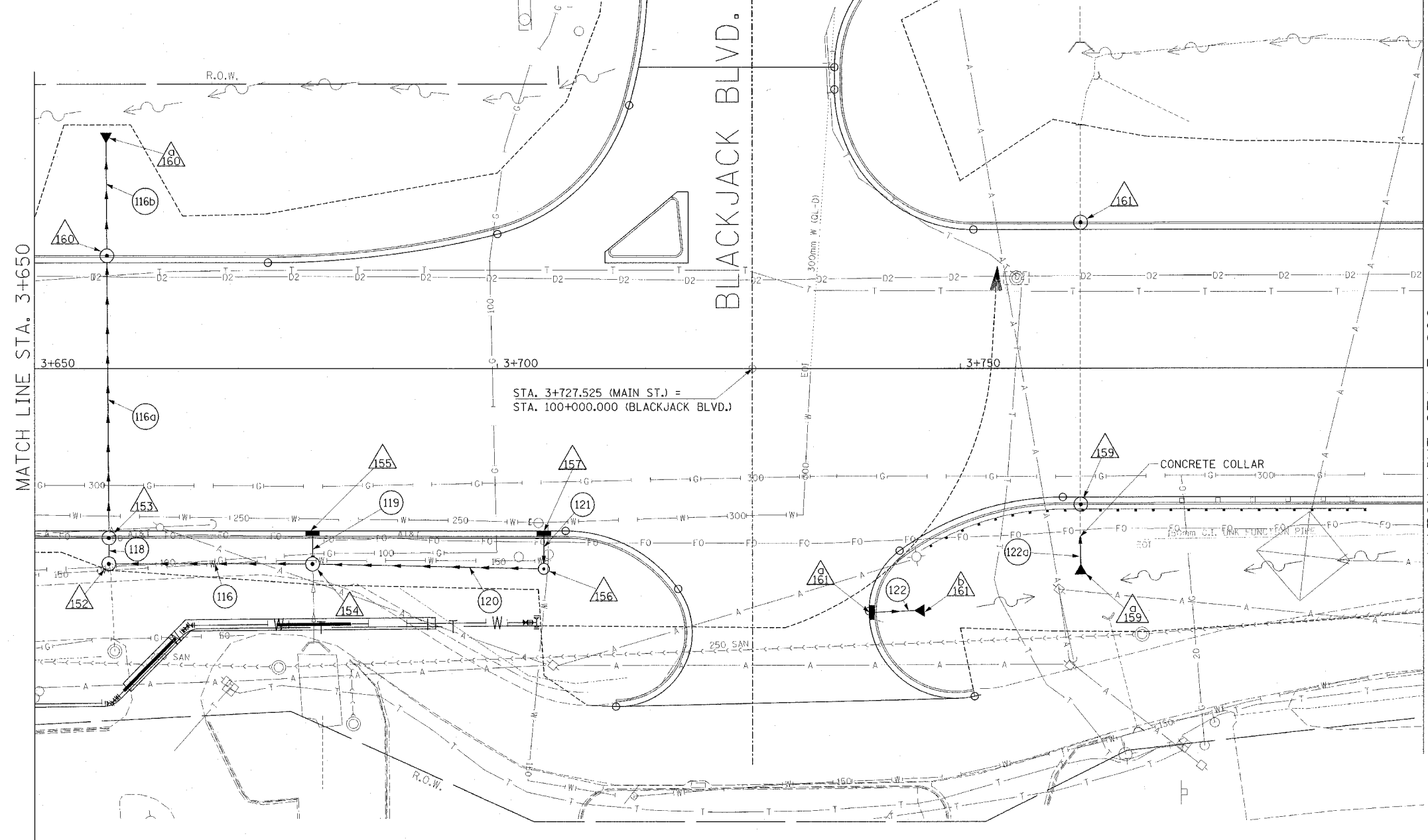
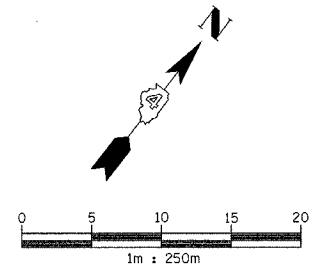


STRUCTURE SCHEDULE													
STRUCTURE NO.	152	153	154	155	156	157	159	159a	160	160a	161	161a	161b
STATION	3+658.000	3+658.000	3+680.000	3+680.000	3+705.000	3+705.000	3+763.000	3+763.000	3+657.820	3+658.000	3+763.000	3+740.125	3+745.000
OFFSET	21.000 R	17.450 R	21.000 R	17.450 R	21.500 R	17.450 R	13.850 R	21.000 R	11.350 L	24.127 L	14.950 L	26.200 R	26.000 R
TYPE	MH TY A 1.5m	INL MH G-1 SPE 1.5m	MH TY A 1.5m	INL G-1 SPE	MH TY A 1.2m	INL G-1 SPE	INL MH G-1 SPE 1.5m	750mm PRC FLARED END SECTION	INL MH G-1 SPE 1.5m	600mm PRC FLARED END SECTION	INL MH G-1 SPE 1.5m	INL G-1 SPE	300mm PRC FLARED END SECTION
F & G	TY 1 CL	DIAGONAL	TY 1 CL	DIAGONAL	TY 1 CL	DIAGONAL	DIAGONAL	DIAGONAL	DIAGONAL	DIAGONAL	DIAGONAL	DIAGONAL	DIAGONAL
CONTROL EL.	143.200	142.856	143.500	143.091	143.500	143.342	143.980	-	142.992	139.300	143.966	143.465	-
INV NW.	141.260	141.240	141.670	-	142.300	-	141.521	-	139.530	-	138.786	-	-
INV SE.	142.149	141.240	141.556	141.700	-	-	141.521	141.910	140.950	-	138.786	-	-
INV NE.	141.260	-	141.670	-	-	-	-	-	-	-	-	142.400	142.350
INV SW.	-	-	141.370	-	142.300	-	-	-	-	-	-	-	-
INV N.	-	-	-	-	-	-	-	-	-	-	-	-	-
INV S.	-	-	-	-	-	-	-	-	-	-	-	-	-
INV E.	-	-	-	-	-	-	-	-	-	-	-	-	-
INV W.	-	-	-	-	-	-	-	-	-	-	-	-	-
REMARKS	-	-	-	-	-	-	BUILD OVER EXIST PIPE	-	-	-	BUILD OVER EXIST PIPE	-	-

F.A.I. RTE.	SECTION	COUNTY	TOTAL SHEETS	SHEET NO.
74	*	TAZEWELL	1366	291
STA. 3+650.000		TO STA. 3+800.000		
FED. ROAD DIST. NO. 4 ILLINOIS FED. AID PROJECT				
* (90-11R-2)9013,14,14-1R-1				



**DRAINAGE LEGEND**

EXISTING	PROPOSED	
○	●	CATCH BASIN
○	○	INLET
○	○	MANHOLE
△	▲	CONC END SECTION
~	~	SAG
↑	↑	SUMMIT
→	→	DITCH
→	→	SWALE
→	→	SANITARY SEWER
→	→	STORM SEWER
→	→	CULVERT PIPE
→	→	TRENCH DRAIN
△		STRUCTURE NUMBER
○		STORM SEWER PIPE NUMBER

PIPE SCHEDULE									
PIPE NO.	116	116a	116b	118	119	120	121	122	122a
U/S-D/S	154 - 152	153 - 160	160 - 160a	152 - 153	155 - 154	156 - 154	157 - 156	161a - 161b	159a - EXIST
LENGTH (m)	22.0	29.3	9.5	2.4	3.3	25.0	3.8	4.6	1.4
SIZE (mm)	600	600	600	600	300	300	300	300	750
CLASS/TYPE	A/2	A/2	A/2	A/2	A/2	A/2	A/1	A/2	A/2
T.B. (cu m)	-	34.3	2.9	-	1.1	-	0.5	0.5	-
REMARKS									CONC. COLLAR

REVISIONS	
NAME	DATE



**PROPOSED IMPROVEMENT**

ILLINOIS DEPARTMENT OF TRANSPORTATION

**DRAINAGE AND UTILITY PLAN**

**MAIN STREET**

STA 3+650 TO 3+800

DATE: 12/20/04

DRAWN BY: JAM  
CHECKED BY: MJS