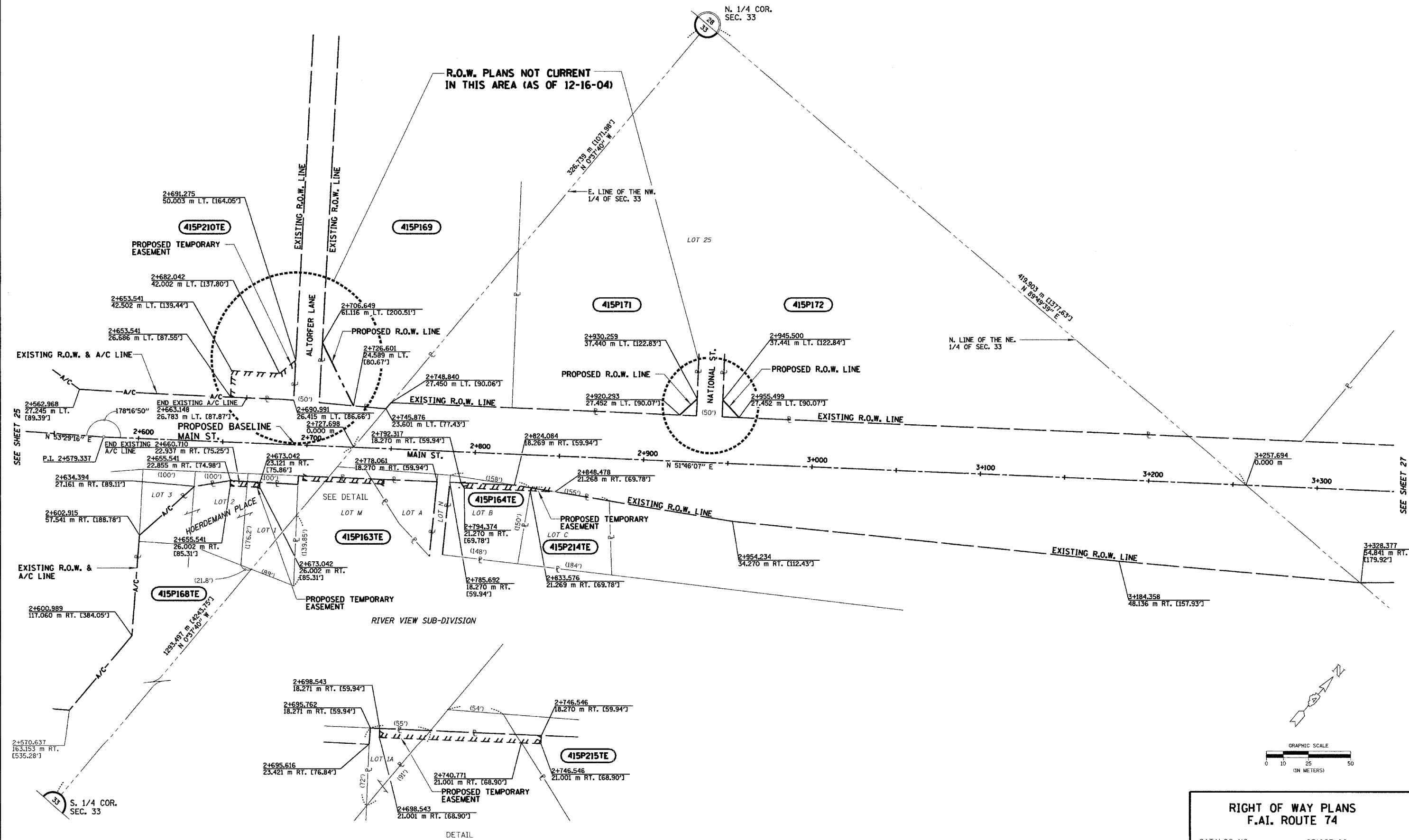


# TOWNSHIP 26 NORTH, RANGE 4 WEST, 3rd P.M.

Total Sheet	303
Sheet No.	1366

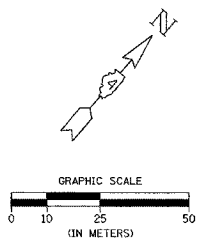


R.O.W. PLANS NOT CURRENT IN THIS AREA (AS OF 12-16-04)

N. 1/4 COR. SEC. 33

SEE SHEET 25

SEE SHEET 27



<b>RIGHT OF WAY PLANS F.A.I. ROUTE 74</b>	
CATALOG NO.	031087-00
SECTION	(72-8)R-1,72(9,9-1)R
STATION	2+550 TO 3+300
JOB. NO.	R-94-015-98 COUNTY TAZEWELL
SCALE	1 : 1000 SHEET 26 OF

NOTES:  
 SURVEYED IN METRIC, DIMENSIONS SHOWN IN ENGLISH HAVE BEEN CONVERTED (1 METER = 3.28083333') METRIC DIMENSIONS AND AREAS SHALL CONTROL.  
 ( ) ENGLISH EQUIVALENT  
 ( ) RECORD DATA

NOTE: PROJECT DATUM IS NAD83 ILLINOIS STATE PLANE COORDINATES, WEST ZONE. THE PROJECT COMBINATION FACTOR IS 0.999941679. ALL LAND ACQUISITION DOCUMENTS WERE PROJECTED TO "GROUND" COORDINATES. FINAL STAKED ALIGNMENTS WERE PROJECTED TO "GROUND" COORDINATES. ALL CONSTRUCTION DOCUMENTS WERE DEVELOPED USING "GRID" COORDINATES.

DETAIL SCALE 1 : 500