

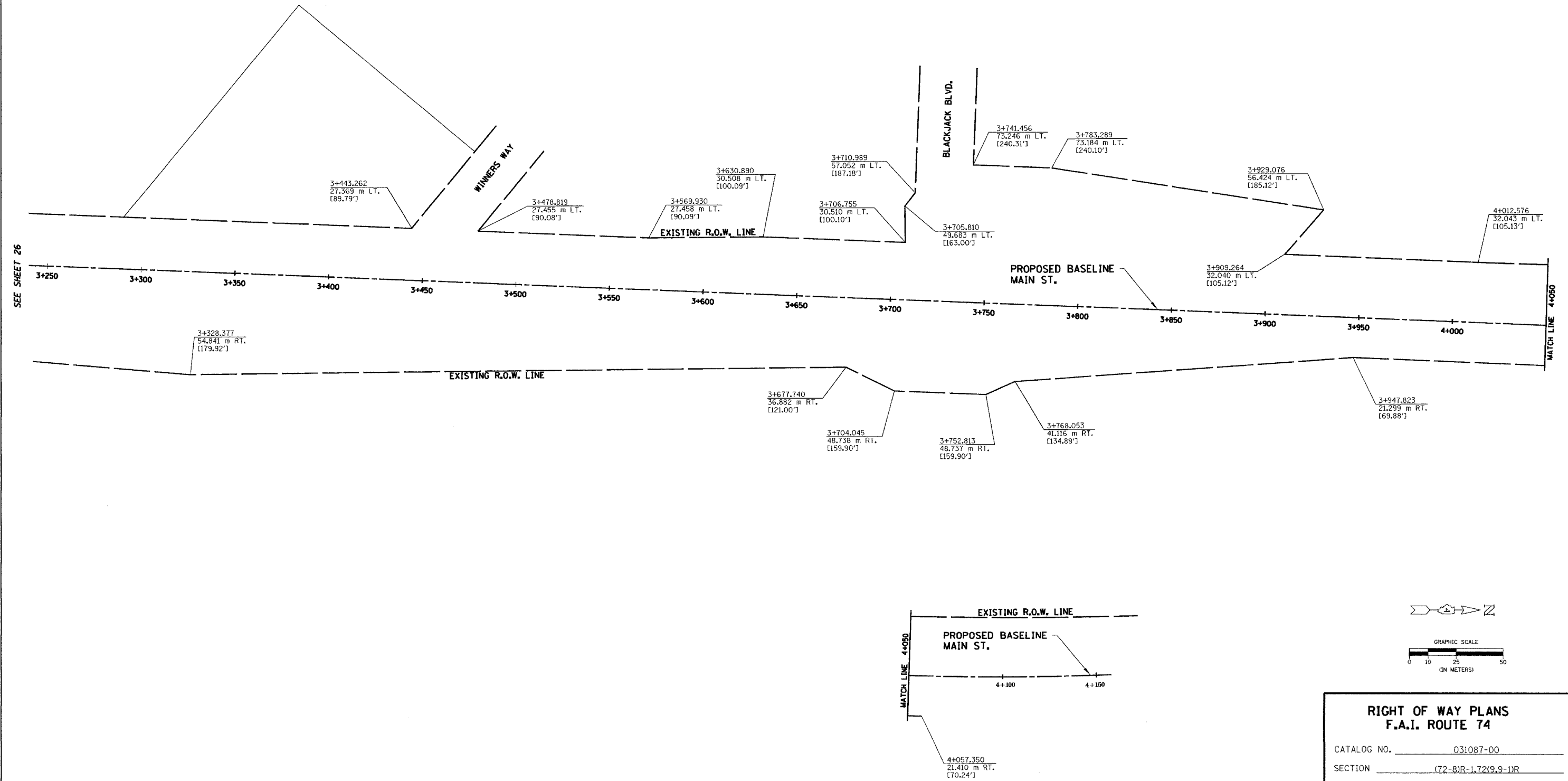
TOWNSHIP 26 NORTH, RANGE 4 WEST, 3rd P.M.

Total Sheets	Sheet No.
1366	304

NOTES:
 SURVEYED IN METRIC, DIMENSIONS SHOWN IN ENGLISH HAVE BEEN CONVERTED (1 METER = 3.28083333') METRIC DIMENSIONS AND AREAS SHALL CONTROL.
 () ENGLISH EQUIVALENT
 () RECORD DATA

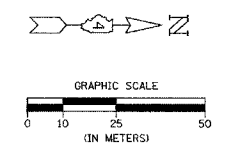
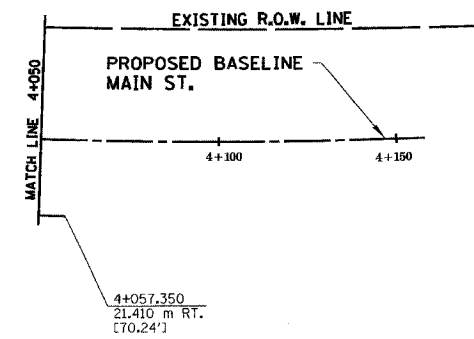
NOTE: PROJECT DATUM IS NAD83 ILLINOIS STATE PLANE COORDINATES, WEST ZONE. THE PROJECT COMBINATION FACTOR IS 0.999941679. ALL LAND ACQUISITION DOCUMENTS WERE PROJECTED TO "GROUND" COORDINATES. FINAL STAKED ALIGNMENTS WERE PROJECTED TO "GROUND" COORDINATES. ALL CONSTRUCTION DOCUMENTS WERE DEVELOPED USING "GRID" COORDINATES.

NOTE: STATION OFFSETS FROM PROPOSED BASELINE OF MAIN ST.



SEE SHEET 26

MATCH LINE 4+050



RIGHT OF WAY PLANS	
F.A.I. ROUTE 74	
CATALOG NO.	031087-00
SECTION	(72-8)R-1.72(9,9-1)R
STATION	3+250 TO 4+150
JOB. NO.	R-94-015-98 COUNTY TAZEWELL
SCALE	1 : 1000 SHEET 27 OF -