

F.A.I. RTE.	SECTION	COUNTY	TOTAL SHEETS	SHEET NO.
74	*	TAZEWELL	1366	316
STA.		TO STA.		
FED. ROAD DIST. NO. 4		ILLINOIS FED. AID PROJECT		

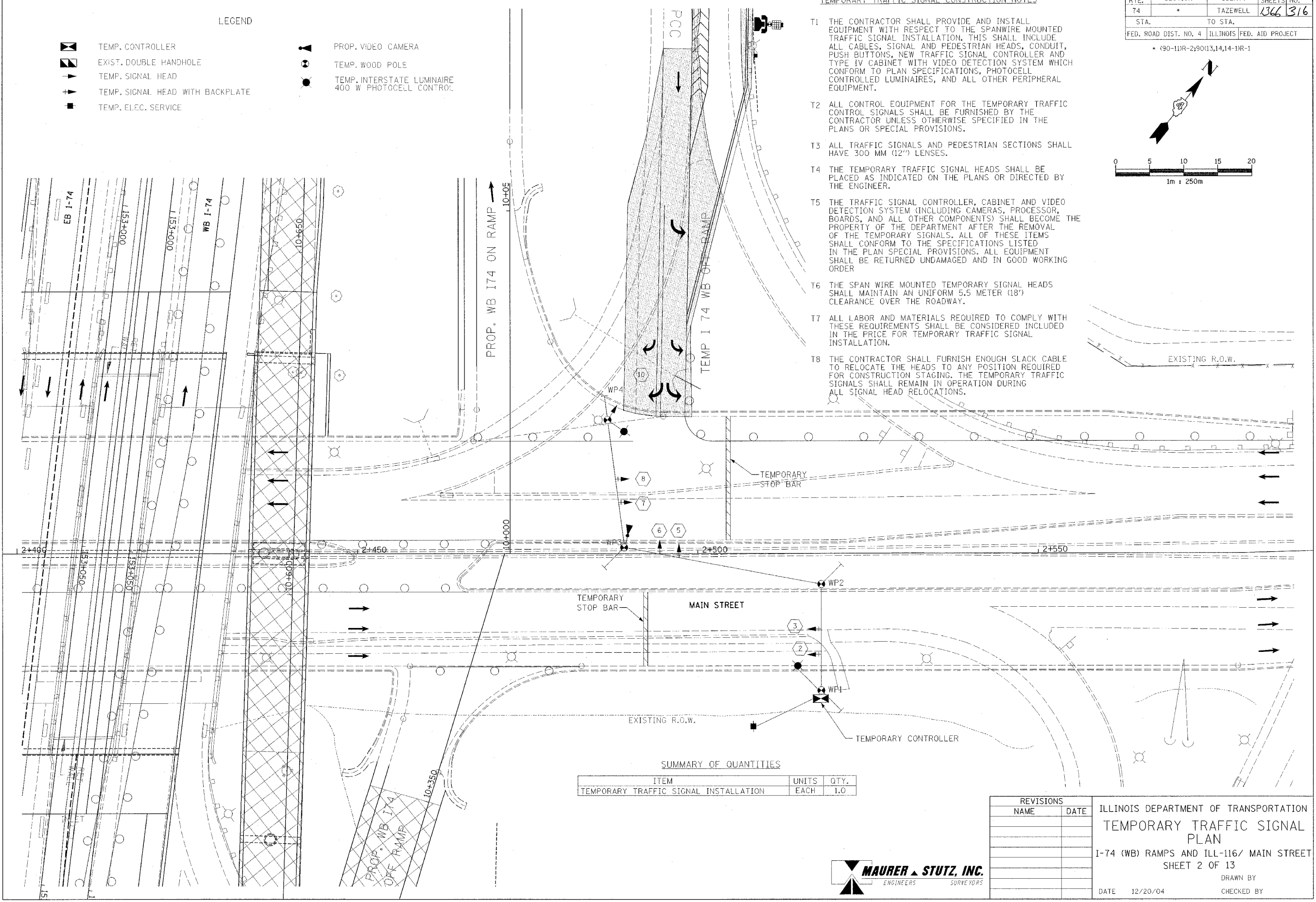
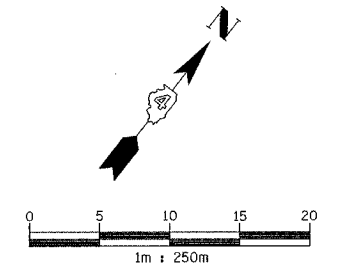
\* (90-111R-2;9013,14,14-1R-1

LEGEND

-  TEMP. CONTROLLER
-  EXIST. DOUBLE HANDHOLE
-  TEMP. SIGNAL HEAD
-  TEMP. SIGNAL HEAD WITH BACKPLATE
-  TEMP. ELEC. SERVICE
-  PROP. VIDEO CAMERA
-  TEMP. WOOD POLE
-  TEMP. INTERSTATE LUMINAIRE 400 W PHOTOCELL CONTROL

TEMPORARY TRAFFIC SIGNAL CONSTRUCTION NOTES

- T1 THE CONTRACTOR SHALL PROVIDE AND INSTALL EQUIPMENT WITH RESPECT TO THE SPANWIRE MOUNTED TRAFFIC SIGNAL INSTALLATION. THIS SHALL INCLUDE ALL CABLES, SIGNAL AND PEDESTRIAN HEADS, CONDUIT, PUSH BUTTONS, NEW TRAFFIC SIGNAL CONTROLLER AND TYPE IV CABINET WITH VIDEO DETECTION SYSTEM WHICH CONFORM TO PLAN SPECIFICATIONS, PHOTOCELL CONTROLLED LUMINAIRES, AND ALL OTHER PERIPHERAL EQUIPMENT.
- T2 ALL CONTROL EQUIPMENT FOR THE TEMPORARY TRAFFIC CONTROL SIGNALS SHALL BE FURNISHED BY THE CONTRACTOR UNLESS OTHERWISE SPECIFIED IN THE PLANS OR SPECIAL PROVISIONS.
- T3 ALL TRAFFIC SIGNALS AND PEDESTRIAN SECTIONS SHALL HAVE 300 MM (12") LENSES.
- T4 THE TEMPORARY TRAFFIC SIGNAL HEADS SHALL BE PLACED AS INDICATED ON THE PLANS OR DIRECTED BY THE ENGINEER.
- T5 THE TRAFFIC SIGNAL CONTROLLER, CABINET AND VIDEO DETECTION SYSTEM (INCLUDING CAMERAS, PROCESSOR, BOARDS, AND ALL OTHER COMPONENTS) SHALL BECOME THE PROPERTY OF THE DEPARTMENT AFTER THE REMOVAL OF THE TEMPORARY SIGNALS. ALL OF THESE ITEMS SHALL CONFORM TO THE SPECIFICATIONS LISTED IN THE PLAN SPECIAL PROVISIONS. ALL EQUIPMENT SHALL BE RETURNED UNDAMAGED AND IN GOOD WORKING ORDER.
- T6 THE SPAN WIRE MOUNTED TEMPORARY SIGNAL HEADS SHALL MAINTAIN AN UNIFORM 5.5 METER (18') CLEARANCE OVER THE ROADWAY.
- T7 ALL LABOR AND MATERIALS REQUIRED TO COMPLY WITH THESE REQUIREMENTS SHALL BE CONSIDERED INCLUDED IN THE PRICE FOR TEMPORARY TRAFFIC SIGNAL INSTALLATION.
- T8 THE CONTRACTOR SHALL FURNISH ENOUGH SLACK CABLE TO RELOCATE THE HEADS TO ANY POSITION REQUIRED FOR CONSTRUCTION STAGING. THE TEMPORARY TRAFFIC SIGNALS SHALL REMAIN IN OPERATION DURING ALL SIGNAL HEAD RELOCATIONS.



SUMMARY OF QUANTITIES

ITEM	UNITS	QTY.
TEMPORARY TRAFFIC SIGNAL INSTALLATION	EACH	1.0

REVISIONS	
NAME	DATE

ILLINOIS DEPARTMENT OF TRANSPORTATION  
**TEMPORARY TRAFFIC SIGNAL PLAN**  
 I-74 (WB) RAMPS AND ILL-116/ MAIN STREET  
 SHEET 2 OF 13  
 DRAWN BY  
 DATE 12/20/04 CHECKED BY

