

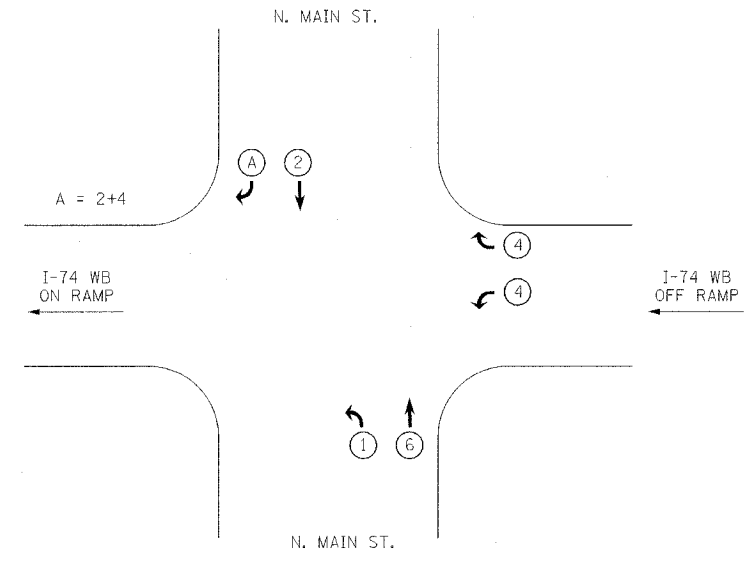
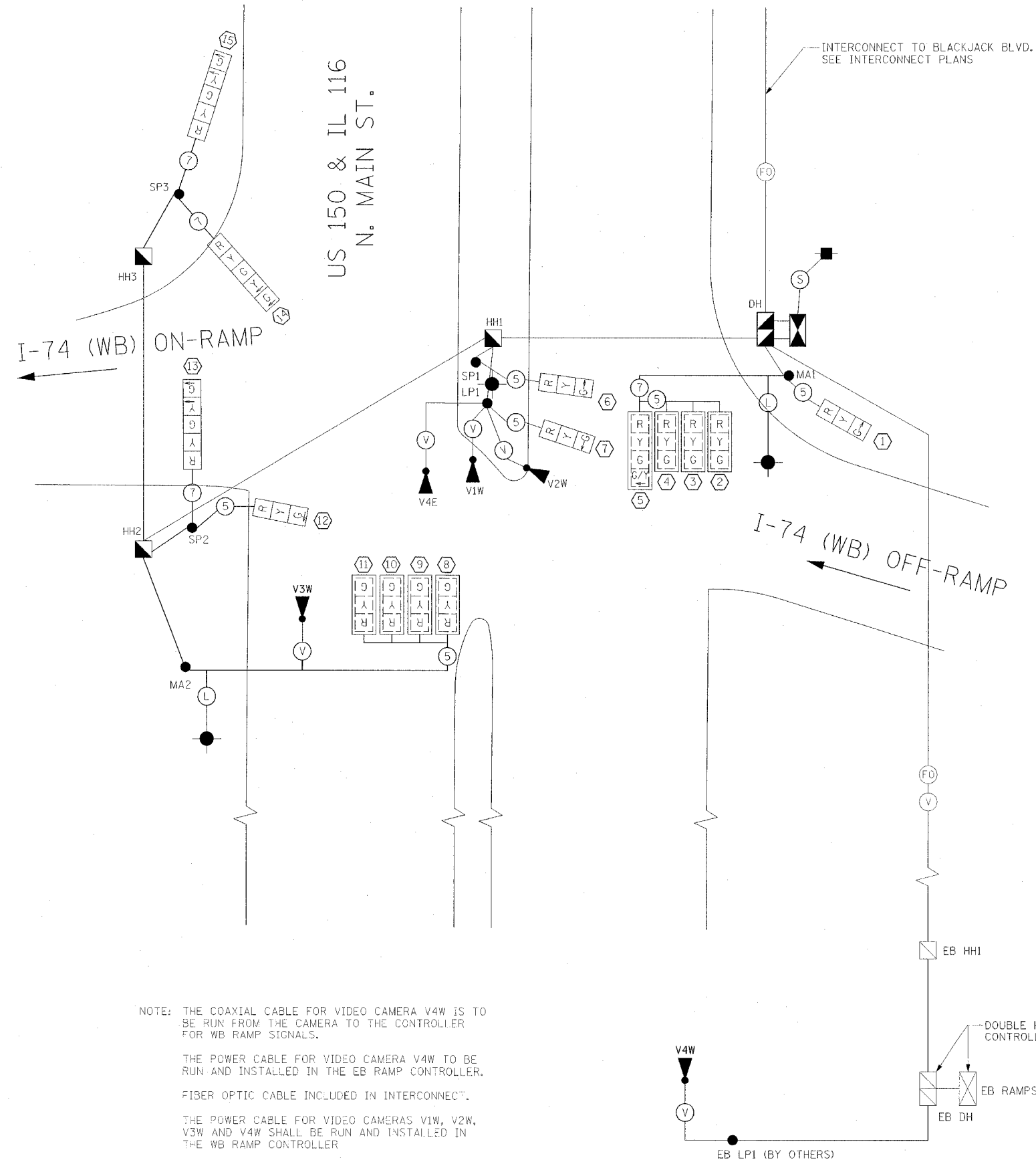
F.A.I. RTE.	SECTION	COUNTY	TOTAL SHEETS	SHEET NO.
74	*	TAZEWELL	1366	319
STA.	TO STA.			
FED. ROAD DIST. NO. 4 ILLINOIS FED. AID PROJECT				

**CONTROLLER SEQUENCE**

N. MAIN ST. AND WB I-74 RAMPS

CONTROLLER SPECIFIED: FULL ACTUATED CONTROLLER (NEMA TS2, TY2) EAGLE TYPE IV CABINET

• (90-11)R-2(90)13,14,14-1R-1



PHASE DESIGNATION DIAGRAM

ITEM	LOCATION	TOTAL QUANTITY
IF, 3 SEC, BM	1,6,7,12	4
IF, 3 SEC, MAM	2,3,4,8,9,10,11	7
IF, 5 SEC, BM	13,14,15	3
IF, 4 SEC, MAM	5	1
BACKPLATES, 4 SEC HEADS	5	1
BACKPLATES, 3 SEC HEADS	2,3,4,8,9,10,11	7

LEGEND

- CONTROLLER
- HANDHOLE
- DOUBLE HANDHOLE
- PROP. LUMINAIRE
- LEFT TURN GREEN
- LEFT TURN YELLOW
- DUAL MODE LED TURN ARROW
- TRAFFIC SIGNAL
- TRAFFIC SIGNAL W/BACK PLATE
- PROP. SERVICE INSTALLATION
- PROP. VIDEO CAMERA
- CONDUIT PUSHED
- CONDUIT IN TRENCH
- PROP. CAMERA VIDEO SIGNAL CABLE \*
- NO. OF CONDUCTORS
- FIBER OPTIC CABLE-(INCLUDE ON INTERCONNECT PLANS)
- PROP. ELECTRIC CABLE, 2-1/2 NO.10 XLP/USE \*\*
- PROP. ELECTRIC CABLE, 3-1/2 NO.6 XLP/USE

\* DENOTES CABLE SHALL BE INCLUDED IN THE PAY ITEM, VIDEO VEHICLE DETECTION SYSTEM.  
 \*\* DENOTES CABLE DOWN POLE SHALL BE INCLUDED IN THE PAY ITEM "LUMINAIRE AS PER ARTICLE 821 IN THE STANDARD SPECIFICATIONS FOR ROAD AND BRIDGE CONSTRUCTION."

NOTE: THE COAXIAL CABLE FOR VIDEO CAMERA V4W IS TO BE RUN FROM THE CAMERA TO THE CONTROLLER FOR WB RAMP SIGNALS.  
 THE POWER CABLE FOR VIDEO CAMERA V4W TO BE RUN AND INSTALLED IN THE EB RAMP CONTROLLER.  
 FIBER OPTIC CABLE INCLUDED IN INTERCONNECT.  
 THE POWER CABLE FOR VIDEO CAMERAS V1W, V2W, V3W AND V4W SHALL BE RUN AND INSTALLED IN THE WB RAMP CONTROLLER

REVISIONS		ILLINOIS DEPARTMENT OF TRANSPORTATION PROPOSED TRAFFIC SIGNAL CABLE PLAN I-74 (WB) RAMPS AND IL-116/MAIN STREET SHEET 5 OF 13
NAME	DATE	
		DATE 12/20/04 DRAWN BY SAM CHECKED BY CTH

