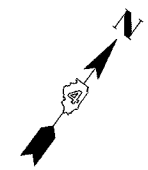
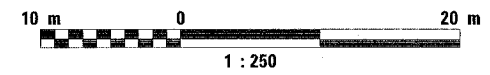


F.A.I. RTE.	SECTION	COUNTY	TOTAL SHEETS	SHEET NO.
74	*	TAZEWELL	1366	323
STA.		TO STA.		
FED. ROAD DIST. NO. 4		ILLINOIS FED. AID PROJECT		
* (90-11R-2;9013,14,14-1R-1				

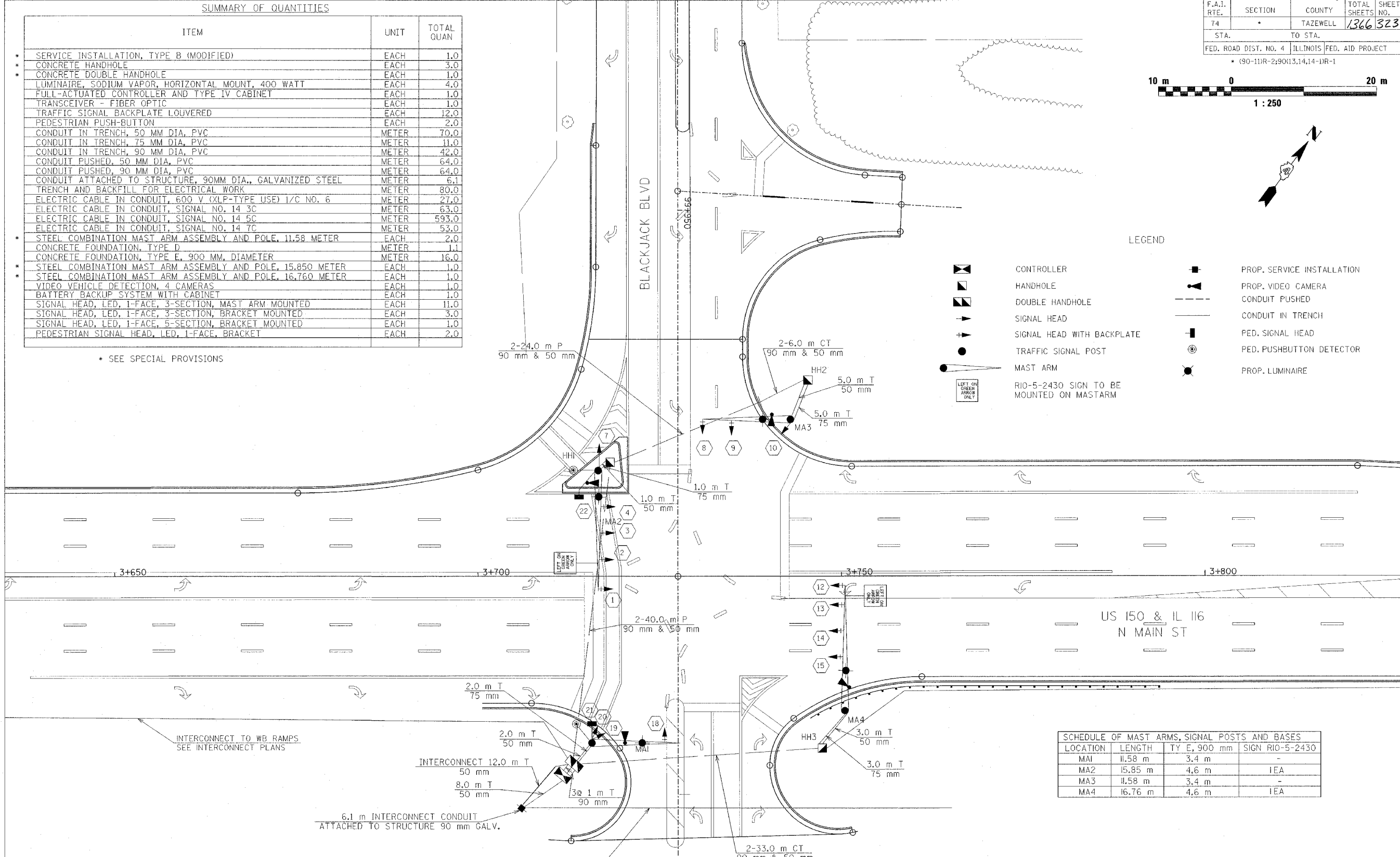


ITEM	UNIT	TOTAL QUAN
SERVICE INSTALLATION, TYPE B (MODIFIED)	EACH	1.0
CONCRETE HANDHOLE	EACH	3.0
CONCRETE DOUBLE HANDHOLE	EACH	1.0
LUMINAIRE, SODIUM VAPOR, HORIZONTAL MOUNT, 400 WATT	EACH	4.0
FULL-ACTUATED CONTROLLER AND TYPE IV CABINET	EACH	1.0
TRANSCEIVER - FIBER OPTIC	EACH	1.0
TRAFFIC SIGNAL BACKPLATE LOUVERED	EACH	12.0
PEDESTRIAN PUSH-BUTTON	EACH	2.0
CONDUIT IN TRENCH, 50 MM DIA, PVC	METER	70.0
CONDUIT IN TRENCH, 75 MM DIA, PVC	METER	11.0
CONDUIT IN TRENCH, 90 MM DIA, PVC	METER	42.0
CONDUIT PUSHED, 50 MM DIA, PVC	METER	64.0
CONDUIT PUSHED, 90 MM DIA, PVC	METER	64.0
CONDUIT ATTACHED TO STRUCTURE, 90MM DIA., GALVANIZED STEEL	METER	6.1
TRENCH AND BACKFILL FOR ELECTRICAL WORK	METER	80.0
ELECTRIC CABLE IN CONDUIT, 600 V (XLP-TYPE USE) 1/C NO. 6	METER	27.0
ELECTRIC CABLE IN CONDUIT, SIGNAL NO. 14 3C	METER	63.0
ELECTRIC CABLE IN CONDUIT, SIGNAL NO. 14 5C	METER	593.0
ELECTRIC CABLE IN CONDUIT, SIGNAL NO. 14 7C	METER	53.0
STEEL COMBINATION MAST ARM ASSEMBLY AND POLE, 11.58 METER	EACH	2.0
CONCRETE FOUNDATION, TYPE D	METER	1.1
CONCRETE FOUNDATION, TYPE E, 900 MM, DIAMETER	METER	16.0
STEEL COMBINATION MAST ARM ASSEMBLY AND POLE, 15.85 METER	EACH	1.0
STEEL COMBINATION MAST ARM ASSEMBLY AND POLE, 16.76 METER	EACH	1.0
VIDEO VEHICLE DETECTION, 4 CAMERAS	EACH	1.0
BATTERY BACKUP SYSTEM WITH CABINET	EACH	1.0
SIGNAL HEAD, LED, 1-FACE, 3-SECTION, MAST ARM MOUNTED	EACH	11.0
SIGNAL HEAD, LED, 1-FACE, 3-SECTION, BRACKET MOUNTED	EACH	3.0
SIGNAL HEAD, LED, 1-FACE, 5-SECTION, BRACKET MOUNTED	EACH	1.0
PEDESTRIAN SIGNAL HEAD, LED, 1-FACE, BRACKET	EACH	2.0

* SEE SPECIAL PROVISIONS

LEGEND

- ◻ CONTROLLER
- ◻ HANDHOLE
- ◻ DOUBLE HANDHOLE
- ➔ SIGNAL HEAD
- ➔+ SIGNAL HEAD WITH BACKPLATE
- TRAFFIC SIGNAL POST
- MAST ARM
- ◻ (with sign) RIO-5-2430 SIGN TO BE MOUNTED ON MASTARM
- ◻ (with arrow) PROP. SERVICE INSTALLATION
- ◻ (with camera) PROP. VIDEO CAMERA
- CONDUIT PUSHED
- CONDUIT IN TRENCH
- ◻ (with arrow) PED. SIGNAL HEAD
- ◻ (with circle) PED. PUSHBUTTON DETECTOR
- (with circle) PROP. LUMINAIRE



LOCATION	LENGTH	TY E, 900 mm	SIGN RIO-5-2430
MA1	11.58 m	3.4 m	-
MA2	15.85 m	4.6 m	IEA
MA3	11.58 m	3.4 m	-
MA4	16.76 m	4.6 m	IEA

REVISIONS	
NAME	DATE

ILLINOIS DEPARTMENT OF TRANSPORTATION
PROPOSED TRAFFIC SIGNALS
 IL-116/MAIN STREET AND BLACKJACK BLVD.
 SHEET 9 OF 13
 DRAWN BY SAM
 CHECKED BY CTH
 DATE 12/20/04

