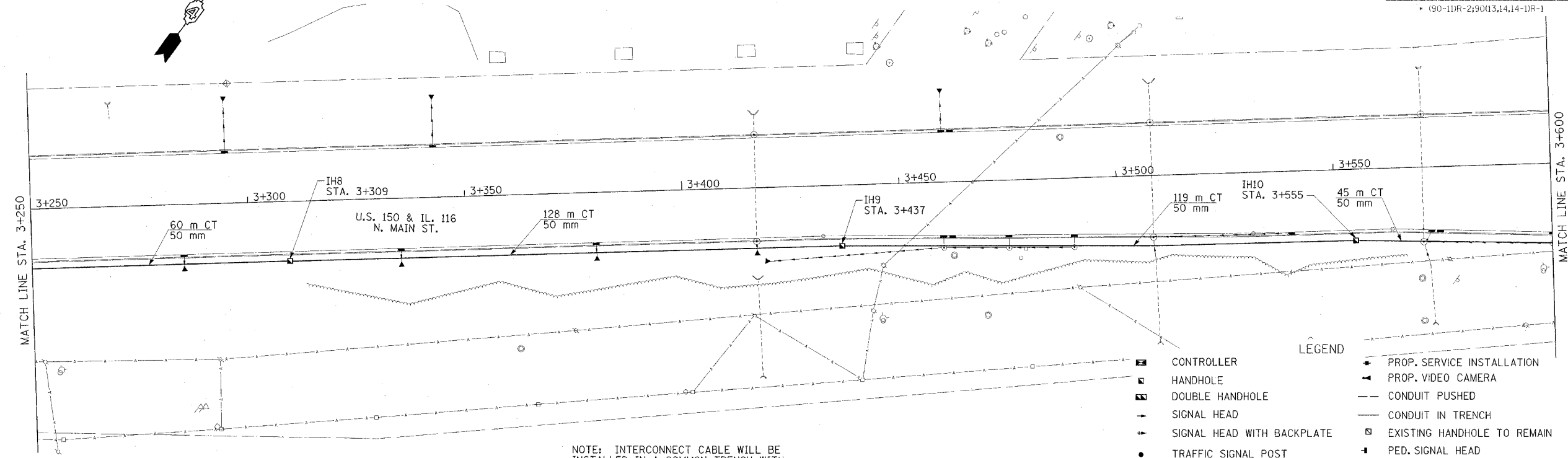
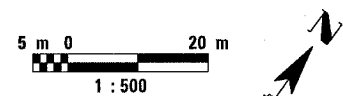


F.A.I. RTE.	SECTION	COUNTY	TOTAL SHEETS	SHEET NO.
74	*	TAZEWELL	1366	327
STA. 3+250		TO STA. 3+950		
FED. ROAD DIST. NO. 4 ILLINOIS FED. AID PROJECT				
* (90-11R-2;9013,14,14-11R-1)				

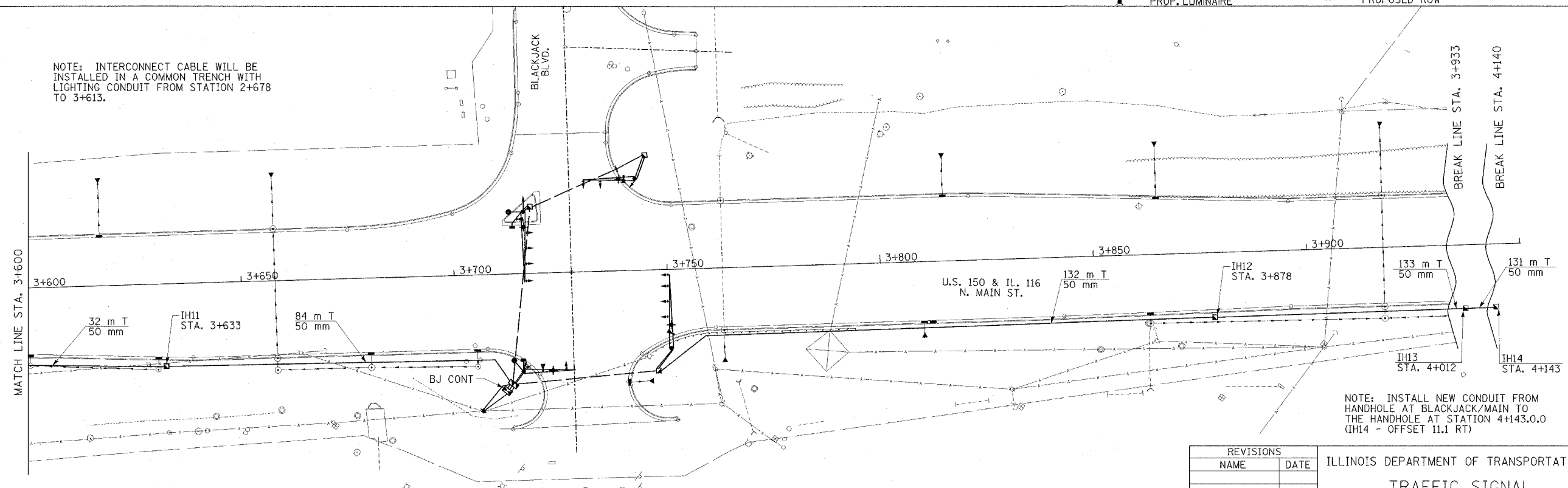


NOTE: INTERCONNECT CABLE WILL BE INSTALLED IN A COMMON TRENCH WITH LIGHTING CONDUIT FROM STATION 2+678 TO 3+613.

**LEGEND**

■	CONTROLLER	▲	PROP. SERVICE INSTALLATION
□	HANDHOLE	▲	PROP. VIDEO CAMERA
▣	DOUBLE HANDHOLE	---	CONDUIT PUSHED
+	SIGNAL HEAD	---	CONDUIT IN TRENCH
+	SIGNAL HEAD WITH BACKPLATE	□	EXISTING HANDHOLE TO REMAIN
●	TRAFFIC SIGNAL POST	+	PED. SIGNAL HEAD
⊥	MAST ARM	●	PED. PUSHBUTTON DETECTOR
■	ILLUMINATED SIGN	---	EXISTING ROW
×	PROP. LUMINAIRE	---	PROPOSED ROW

NOTE: INTERCONNECT CABLE WILL BE INSTALLED IN A COMMON TRENCH WITH LIGHTING CONDUIT FROM STATION 2+678 TO 3+613.



NOTE: INSTALL NEW CONDUIT FROM HANDHOLE AT BLACKJACK/MAIN TO THE HANDHOLE AT STATION 4+143.0.0 (IH14 - OFFSET 11.1 RT)

**SUMMARY OF QUANTITIES THIS PAGE**

CONCRETE HANDHOLE IH8, IH9, IH10, IH11, IH12, IH13, IH14	EACH	7
CONDUIT IN TRENCH 50 mm	METER	1229
TRENCH BACKFILL FOR ELECTRICAL WORK	METER	864
FIBER OPTIC CABLE NO. 62.5/125 MM12 & SM 12	METER	509

QUANTITIES INCLUDED WITH TRAFFIC SIGNALS

NOTE: INSTALL NEW CONDUIT AND FIBER OPTIC CABLE FROM WB DOUBLE HANDHOLE TO THE CONTROLLER AT BLACKJACK/MAIN.



**REVISIONS**

NAME	DATE

ILLINOIS DEPARTMENT OF TRANSPORTATION  
**TRAFFIC SIGNAL INTERCONNECT PLAN**  
 SHEET 13 OF 13  
 DATE 12/20/04  
 DRAWN BY SAM  
 CHECKED BY CTH