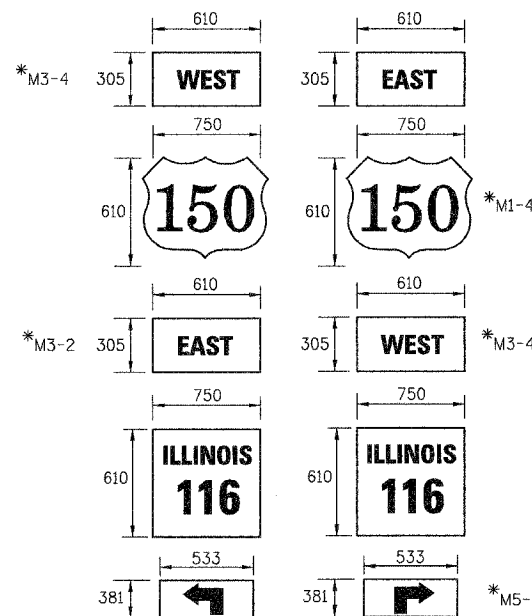


F.A.I. RTE.	SECTION	COUNTY	TOTAL SHEETS	SHEET NO.
74	*	TAZEWELL	1366	346
FED. ROAD DIST. NO.	ILLINOIS	FED. AID PROJECT		

*190-IDR-2;90(13, 14, 14-IDR-1



17 COMPOSITE TEMPORARY SIGN OVERLAY
 EB I-74 (STAGE 3A)
 STA. 152+537

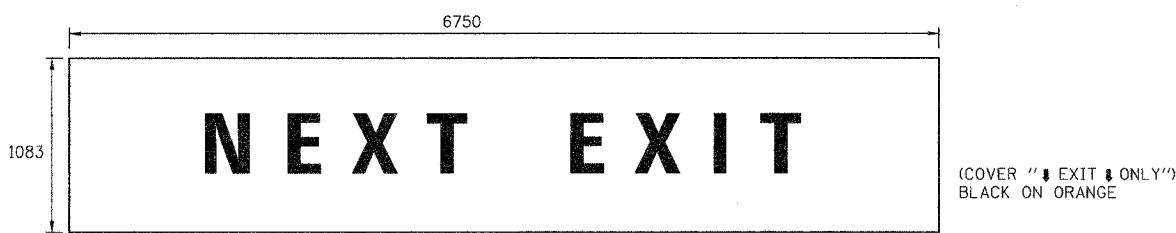
18 COMPOSITE TEMPORARY SIGN OVERLAY
 EB I-74 (STAGE 3A)
 STA. 152+537

19 COMPOSITE TEMPORARY SIGN OVERLAY
 EB I-74 (STAGE 3A)
 STA. 152+819

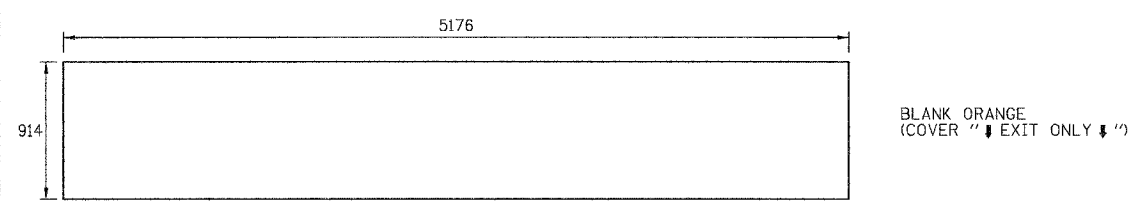
20 COMPOSITE TEMPORARY SIGN OVERLAY
 WB I-74 (STAGE 3B)
 STA. 153+190

21 COMPOSITE TEMPORARY SIGN OVERLAY
 EB I-74 (STAGE 3A)
 STA. 153+606

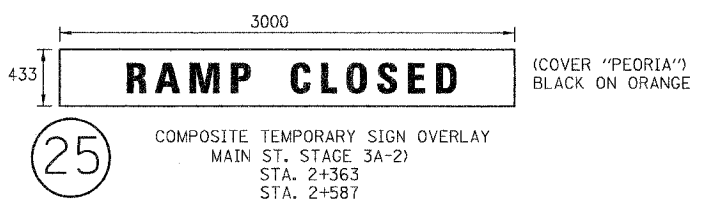
16 TEMPORARY SIGN PANEL ASSEMBLY
 WB I-74 (STAGE 3B)
 STA. 152+963



23 COMPOSITE TEMPORARY SIGN OVERLAY
 WB I-74 (STAGE 3A)
 STA. 152+446



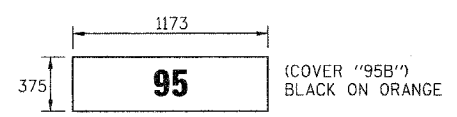
22 COMPOSITE TEMPORARY SIGN OVERLAY
 WB I-74 (STAGE 3A)
 STA. 152+244



25 COMPOSITE TEMPORARY SIGN OVERLAY
 MAIN ST. STAGE 3A-2)
 STA. 2+363
 STA. 2+587

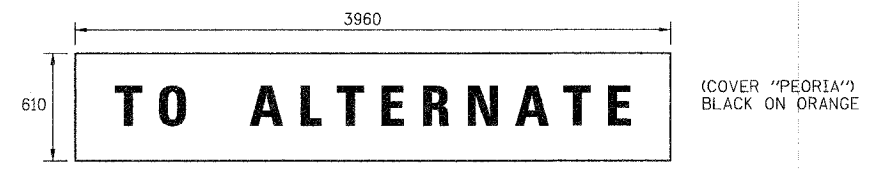


27 TEMPORARY SIGN PANEL ASSEMBLY
 MAIN ST. (STAGE 3A-2)
 STA. 2+464

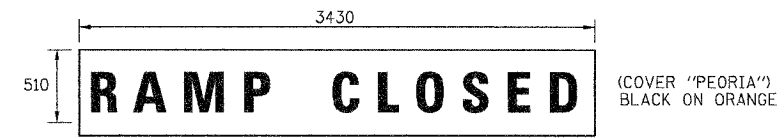


24 COMPOSITE TEMPORARY SIGN OVERLAY
 WB I-74 (STAGE 3A)
 STA. 153+184
 STA. 153+776

26 COMPOSITE TEMPORARY SIGN OVERLAY
 WB I-74 (STAGE 3B)
 STA. 153+165



29 COMPOSITE TEMPORARY SIGN OVERLAY
 WB I-74 (STAGE 3A)
 STA. 153+593



28 COMPOSITE TEMPORARY SIGN OVERLAY
 WB I-74 (STAGE 3A)
 STA. 153+593

T.I.S. SHEET 7 OF 33

REVISIONS		ILLINOIS DEPARTMENT OF TRANSPORTATION
NAME	DATE	
		TEMPORARY GUIDE SIGN DETAILS DRAWN BY MLS CHECKED BY JJM DATE 12-20-04

URS
 URS CORPORATION
 DECATUR, ILLINOIS

* PER MANUAL ON UNIFORM TRAFFIC CONTROL DEVICES