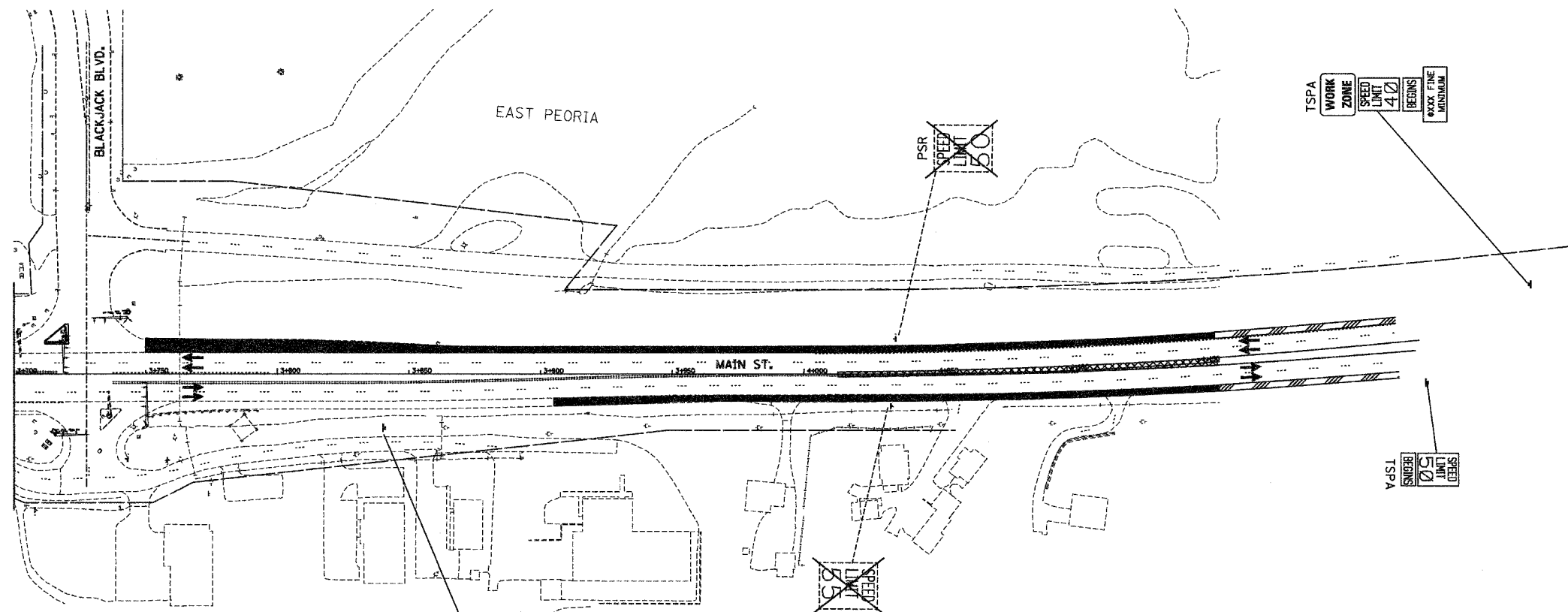
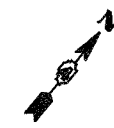
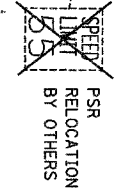
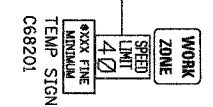


F.A.I. RTE.	SECTION	COUNTY	TOTAL SHEETS	SHEET NO.
74	*	TAZEWELL	1366	350
STA.		TO STA.		
FED. ROAD DIST. NO.		ILLINOIS FED. AID PROJECT		
• (90-11R-2,90113, 14, 14-11R-1				



- LEGEND:
- PERM SIGN, C68197 - PERMANENT SIGN, INSTALLED IN CONTRACT NO. 68197
 - TEMP SIGN, C68193 - EXISTING TEMPORARY SIGN INSTALLED IN CONTRACT 68193
 - RET - RETAIN EXISTING SIGN
 - PSR - REMOVAL IN PERMANENT SIGNING PLANS (TIMING OF REMOVAL INDICATED IN SUB-STAGE BY X'S)
 - RTSPA - REINSTALL TEMPORARY SIGN PANEL ASSEMBLY (INCLUDES REMOVAL)
 - CTSO - COMPOSITE TEMPORARY SIGN OVERLAY (INCLUDES REMOVAL)
 - SPO(S) - SIGN PANEL OVERLAY, SPECIAL (INCLUDES REMOVAL)
 - TSP0 - TEMPORARY SIGN PANEL OVERLAY (INCLUDES REMOVAL)
 - TSPA - TEMPORARY SIGN PANEL ASSEMBLY (INCLUDES REMOVAL)
 - RSPA - REMOVE SIGN PANEL ASSEMBLY
 - RELSPA - RELOCATE SIGN PANEL ASSEMBLY
 - SP - SIGN PANEL, TYPE 1, 2 OR 3 AND ASSEMBLY TYPE A OR B.
 - TC&P(SP) - SIGN INCLUDED IN MOT STANDARD FOR TRAFFIC CONTROL (PAID AS PART OF TRAFFIC CONTROL AND PROTECTION, SPECIAL)
 - TC&P(EX) - SIGN INCLUDED IN MOT STANDARD FOR TRAFFIC CONTROL AND PROTECTION (PAID AS PART OF TRAFFIC CONTROL AND PROTECTION, EXPRESSWAYS)



\$FILE\$
\$TIME\$
\$DATE\$

T.I.S. SHEET 11 OF 33

INFORMATION FOR THIS SHEET WAS PROVIDED BY ALFRED BENESCH & COMPANY



REVISIONS	
NAME	DATE

ILLINOIS DEPARTMENT OF TRANSPORTATION
 CONCEPTUAL TEMPORARY
 INFORMATION SIGNING PLAN
 CONTRACT 68201
 STAGE 3A-1 (PRE-STAGE 3)
 DRAWN BY DJK
 CHECKED BY DPA
 DATE 12-20-04