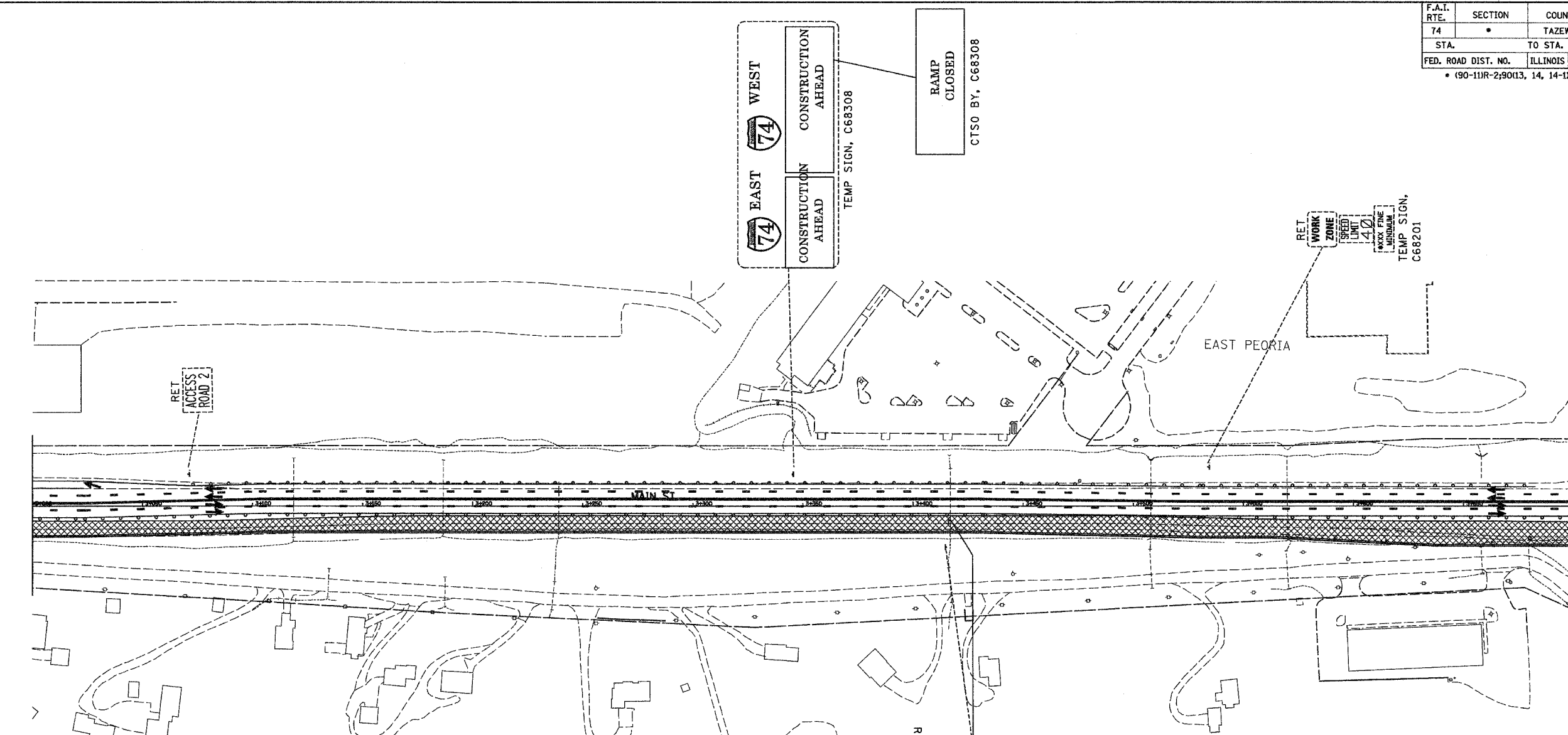
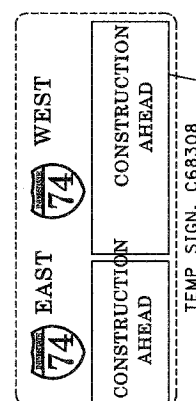
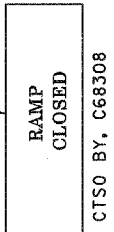
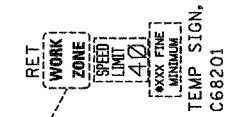
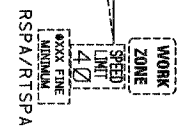


F.A.I. RTE.	SECTION	COUNTY	TOTAL SHEETS	SHEET NO.
74	*	TAZEWELL	1366	356
STA.		TO STA.		
FED. ROAD DIST. NO.		ILLINOIS		FED. AID PROJECT
• (90-111R-2,90113, 14, 14-11R-1				



LEGEND:

- PERM SIGN, C68197 - PERMANENT SIGN, INSTALLED IN CONTRACT NO. 68199
- TEMP SIGN, C68193 - EXISTING TEMPORARY SIGN INSTALLED IN CONTRACT 68195
- RET - RETAIN EXISTING SIGN
- PSR - REMOVAL IN PERMANENT SIGNING PLANS (TIMING OF REMOVAL INDICATED IN SUB-STAGE BY X'S)
- RTSPA - REINSTALL TEMPORARY SIGN PANEL ASSEMBLY (INCLUDES REMOVAL)
- CTS0 - COMPOSITE TEMPORARY SIGN OVERLAY (INCLUDES REMOVAL)
- SPO(S) - SIGN PANEL OVERLAY, SPECIAL (INCLUDES REMOVAL)
- TSP0 - TEMPORARY SIGN PANEL OVERLAY (INCLUDES REMOVAL)
- TSPA - TEMPORARY SIGN PANEL ASSEMBLY (INCLUDES REMOVAL)
- RSPA - REMOVE SIGN PANEL ASSEMBLY
- RELSPA - RELOCATE SIGN PANEL ASSEMBLY
- SP - SIGN PANEL, TYPE 1, 2 OR 3 AND ASSEMBLY TYPE A OR B.
- TC&P(SP) - SIGN INCLUDED IN MOT STANDARD FOR TRAFFIC CONTROL (PAID AS PART OF TRAFFIC CONTROL AND PROTECTION, SPECIAL)
- TC&P(EX) - SIGN INCLUDED IN MOT STANDARD FOR TRAFFIC CONTROL AND PROTECTION (PAID AS PART OF TRAFFIC CONTROL AND PROTECTION, EXPRESSWAYS)



\$FILE\$
\$TIME\$
\$DATE\$

T.I.S. SHEET 17 OF 33



INFORMATION FOR THIS SHEET WAS PROVIDED BY ALFRED BENESCH & COMPANY

ab **alfred benesch & company**
CONSULTING ENGINEERS
205 NORTH MICHIGAN AVENUE, CHICAGO, ILLINOIS 60601

REVISIONS	
NAME	DATE

ILLINOIS DEPARTMENT OF TRANSPORTATION
CONCEPTUAL TEMPORARY
INFORMATION SIGNING PLAN
CONTRACT 68201
STAGE 3A-2

DATE 12-20-04

DRAWN BY DJK
CHECKED BY DPA