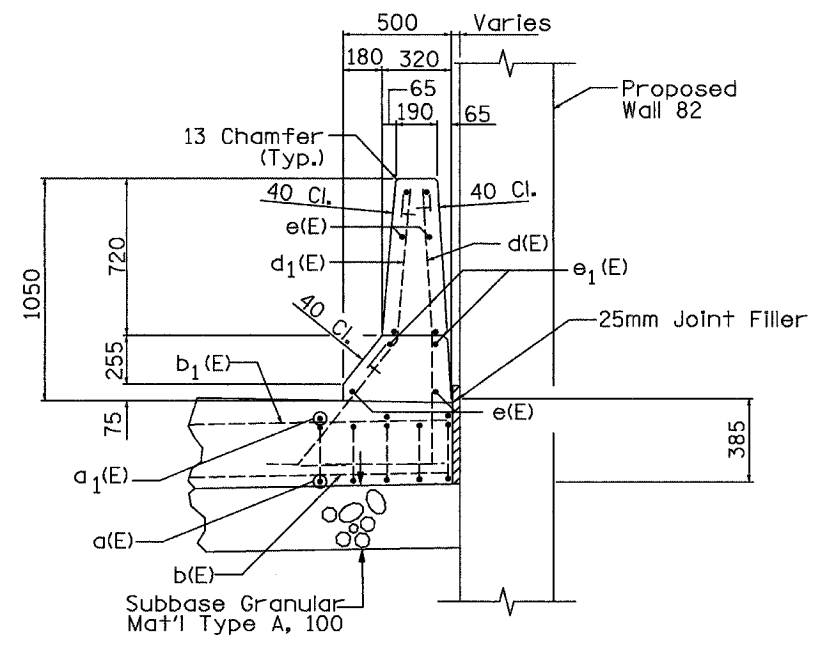
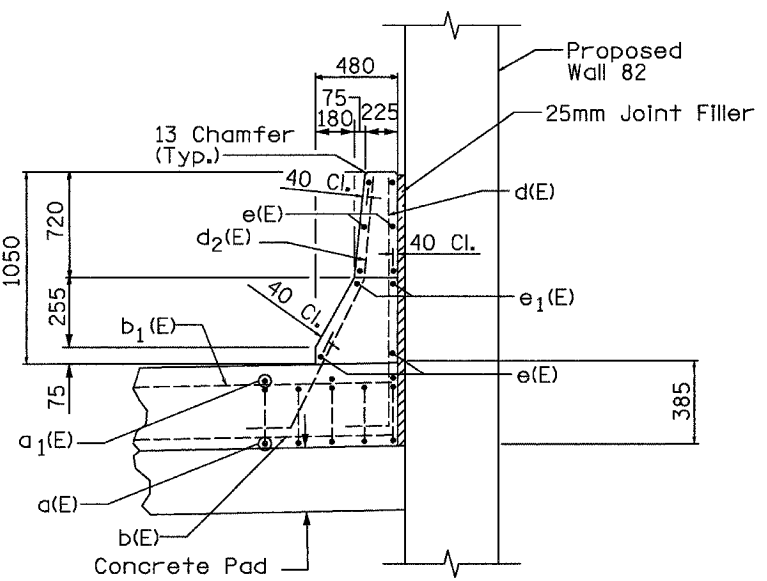


Rd 51 32 21 1002/02/01 .dgn 6865-6011EN Apprevd\_12/28/04

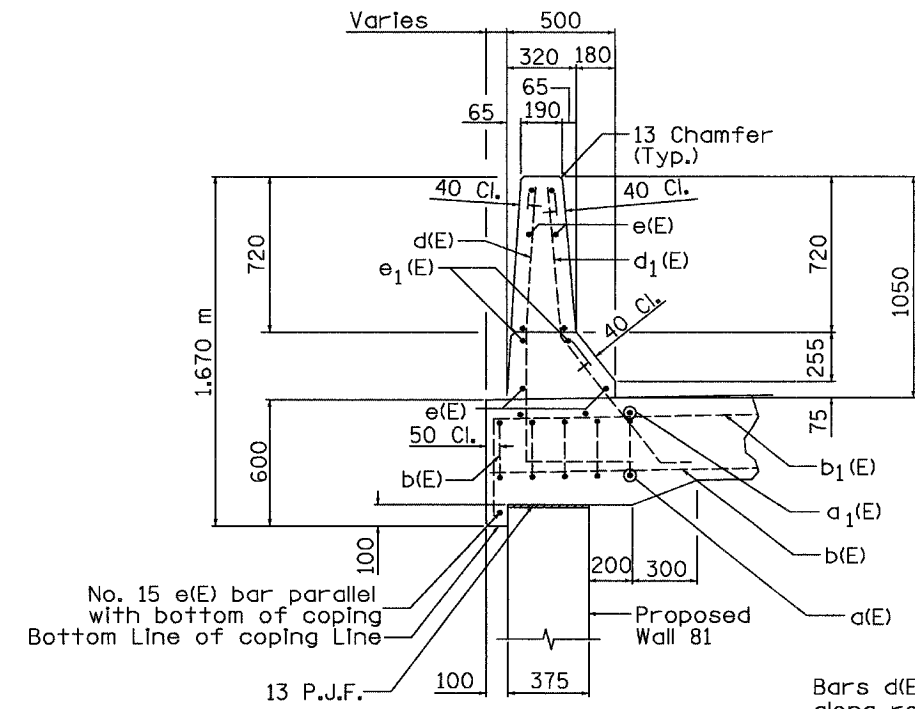
F.A.I. RTE.	SECTION	COUNTY	TOTAL SHEETS	SHEET NO.
74	90-10R-2003,14-1R-1	TAZEWELL	1366	381
STA.		TO STA.		
FED. ROAD DIST. NO. 4		ILLINOIS FED. AID PROJECT		



**SECTION E-E**



**SECTION F-F**



**SECTION G-G**

**MINIMUM BAR LAP**

#15	490
#25	1.010 m

Bars d(E) and d<sub>1</sub>(E) continue south along retaining wall at 300mm & 275mm, respectively as shown in Section G-G.

Bars e(E) and e<sub>1</sub>(E) continue south along retaining wall as shown in Section G-G.

**Notes:**  
 See Sheet 6 of 6 for Slab No. 6 Bill of Material.  
 All bars for parapet bill shall be epoxy coated.

**Note:**  
 All dimensions are in millimeters unless otherwise shown.



REVISIONS	
NAME	DATE

ILLINOIS DEPARTMENT OF TRANSPORTATION  
 BRIDGE APPROACH PAVEMENT  
 DETAILS EAST SLAB, RAMP K-2  
 OVER MAIN ST. (ILL 116)

DATE 12-20-04  
 DRAWN BY TMM  
 CHECKED BY ACW