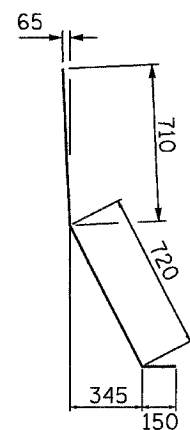


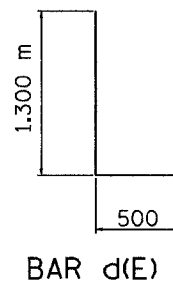
12/20/2004 10:22:21 AM C:\BMS-9011\BMS-9011.dwg

60201

F.A.I. RTE.	SECTION	COUNTY	TOTAL SHEETS	SHEET NO.
74	80-1R-2003(14)-1R-1	TAZEWELL	1366	382
STA.		TO STA.		
FED. ROAD DIST. NO. 4		ILLINOIS FED. AID PROJECT		



BAR d<sub>1</sub>(E)



BAR d(E)

**PARAPET  
BILL OF MATERIAL**  
 (Slab No. 6, West Barrier ONLY)

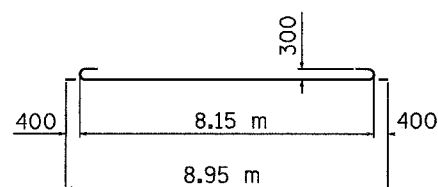
BAR	NO.	SIZE	LENGTH	SHAPE
d(E)	30	15	1.80	┘
d <sub>1</sub> (E)	33	15	1.58	┘
e(E)	8	15	8.90	—
e <sub>1</sub> (E)	2	25	8.90	—
REINFORCEMENT BARS (EPOXY COATED)			kg	350
CONCRETE SUPERSTRUCTURE			m <sup>3</sup>	2.9

Notes:

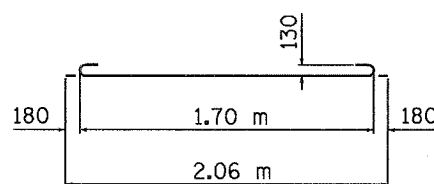
The Bill of Material above is for information ONLY. Cost is included in Approach Pavement (Special).

All bars shall be epoxy coated.

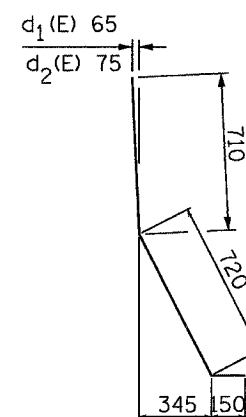
All dimensions are in millimeters unless otherwise shown.



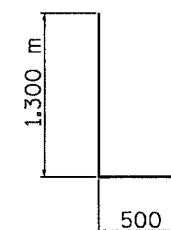
BAR a(E)



BAR a<sub>2</sub>(E)



BARS d<sub>1</sub>(E), d<sub>2</sub>(E)



BAR d(E)

**PARAPET  
BILL OF MATERIAL**  
 (Slab No. 6, East Barrier ONLY)

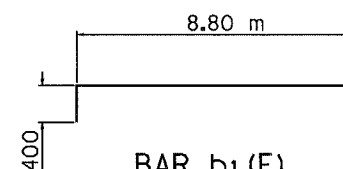
BAR	NO.	SIZE	LENGTH	SHAPE
d(E)	30	15	1.80	┘
d <sub>1</sub> (E)	17	15	1.58	┘
d <sub>2</sub> (E)	16	15	1.58	┘
e(E)	8	15	8.90	—
e <sub>1</sub> (E)	2	25	8.90	—
REINFORCEMENT BARS (EPOXY COATED)			kg	350
CONCRETE SUPERSTRUCTURE			m <sup>3</sup>	2.9

Notes:

Bill of Material for Barrier for East Approach of Ramp K-2 (Slab No. 6) and information only.

All bars shall be epoxy coated.

All dimensions are in millimeters unless otherwise shown.



BAR b<sub>1</sub>(E)

SHEET 6 OF 6

REVISIONS	
NAME	DATE

ILLINOIS DEPARTMENT OF TRANSPORTATION  
 BRIDGE APPROACH PAVEMENT  
 DETAILS EAST SLAB, RAMP K-2  
 OVER MAIN ST. (ILL 116)

**URS**  
 URS CORPORATION  
 ST. LOUIS, MO

DATE 12-20-04  
 DRAWN BY TMM  
 CHECKED BY ACW

DATE: \$DATE\$ TIME: \$TIME\$ HERE \$HERE\$ FILE NAME: \$FILE\$ IS LARGE ENOUGH FOR LONG FILE NAMES