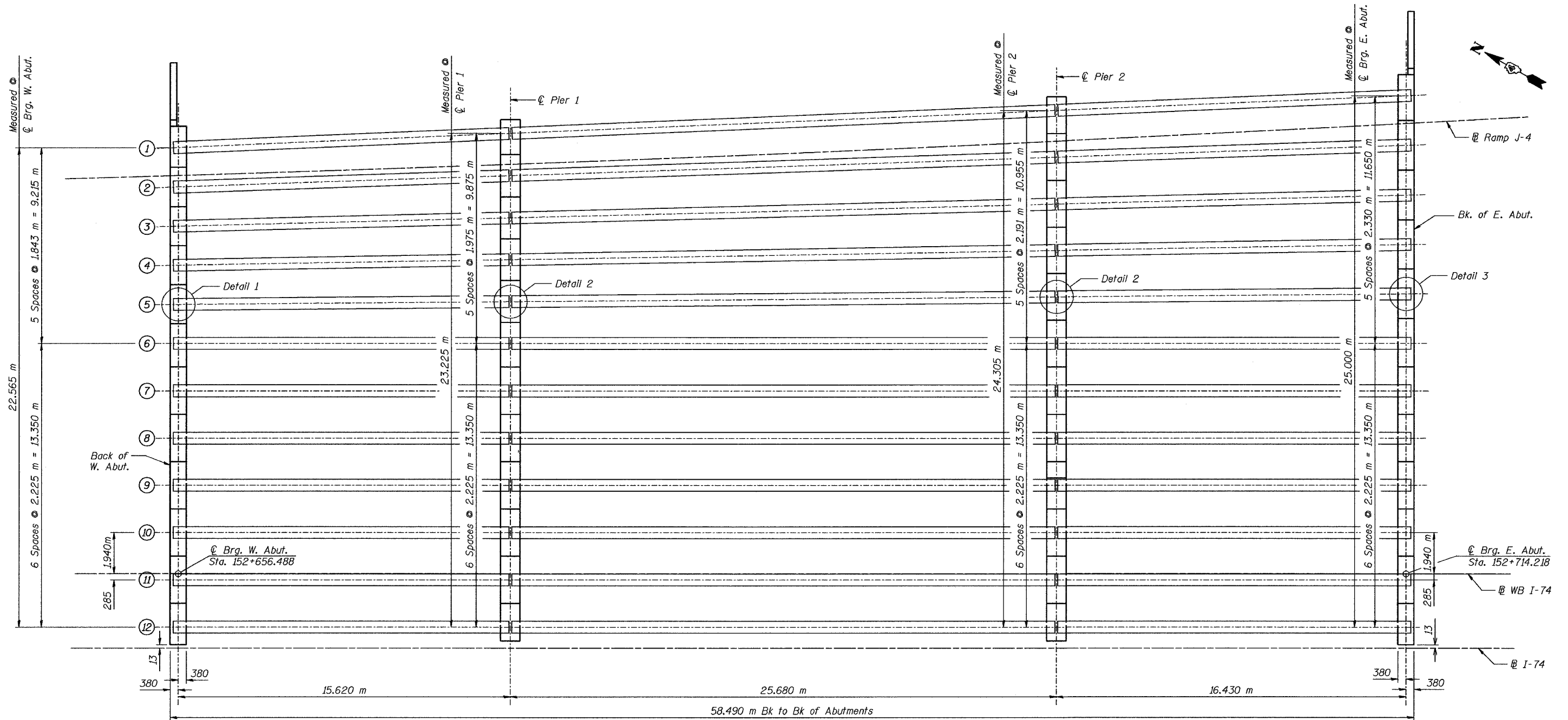
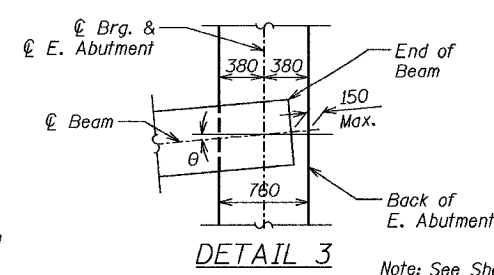
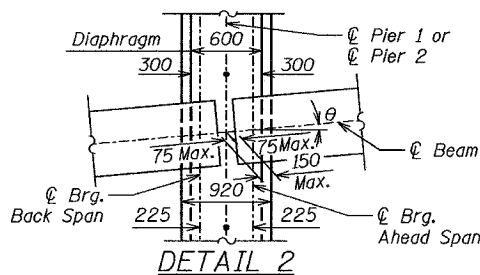
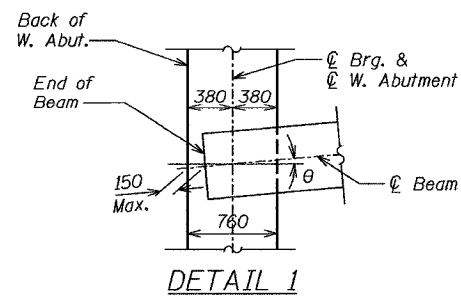


STATE OF ILLINOIS
DEPARTMENT OF TRANSPORTATION

ROUTE NO.	SECTION	COUNTY	TOTAL SHEETS	SHEET NO.
F.A.I. 74	(90-11VB)B	TAZEWELL	1366	401
FED. ROAD DIST. NO. 7		ILLINOIS	FED. AID PROJECT	



FRAMING PLAN



Beam	θ
1	2°24'55"
2	1°55'57"
3	1°26'59"
4	0°58'00"
5	0°29'00"
6-12	0°00'00"

Note: See Sheets #14 & 15 of 33 for Beam Details.
All Stations and elevations are in meters.
All dimensions are in millimeters (mm) except as noted.



Date		FRAMING PLAN		Sheet No.
Designed	JLK	INTERSTATE 74 AND RAMPS J-4 OVER ALTORFER LANE AND TP&W R.R. F.A.I. RTE. 74 SECTION (90-11VB)BR TAZEWELL COUNTY STATION 152+685.353 STRUCTURE NO. 090-0159 (WB)		13 of 33
Drawn	KDK			
Checked	RME			
Approved	DLC			
Date: 7-21-04		URS Job No. 210001243.02		