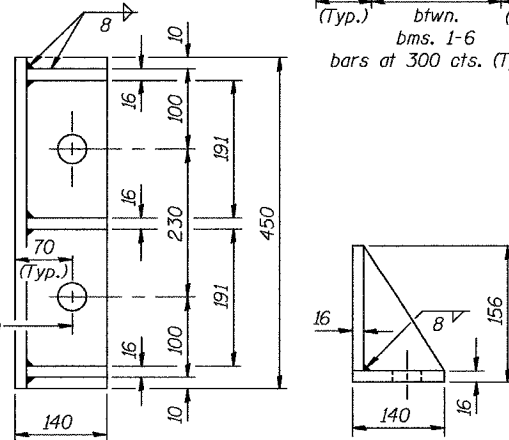
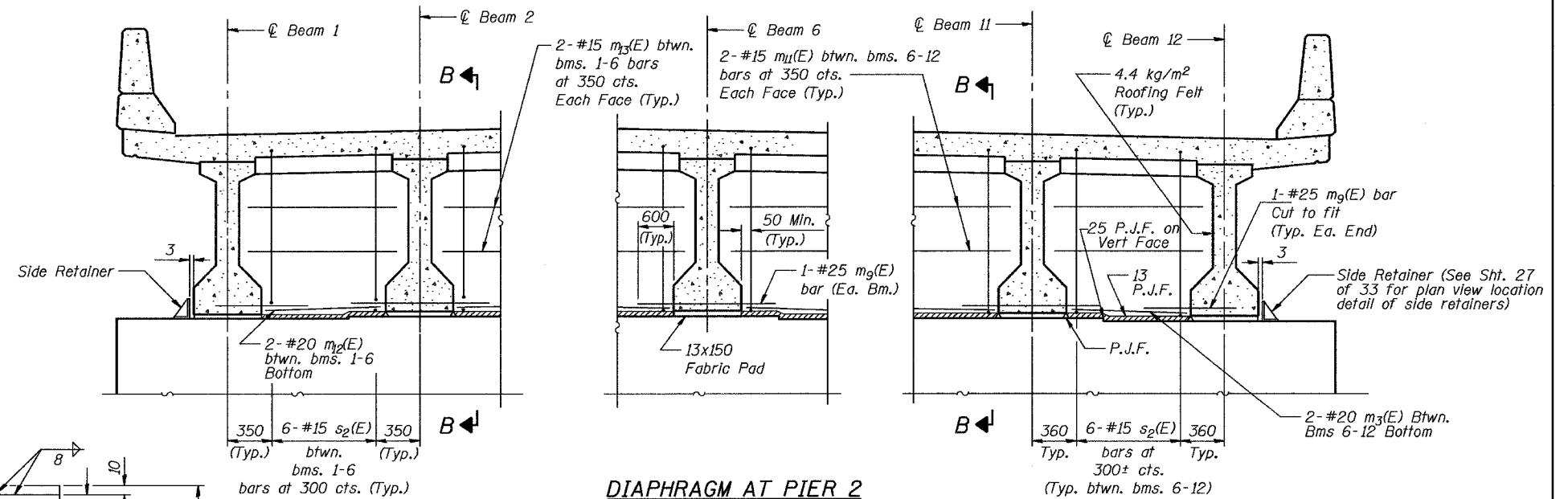
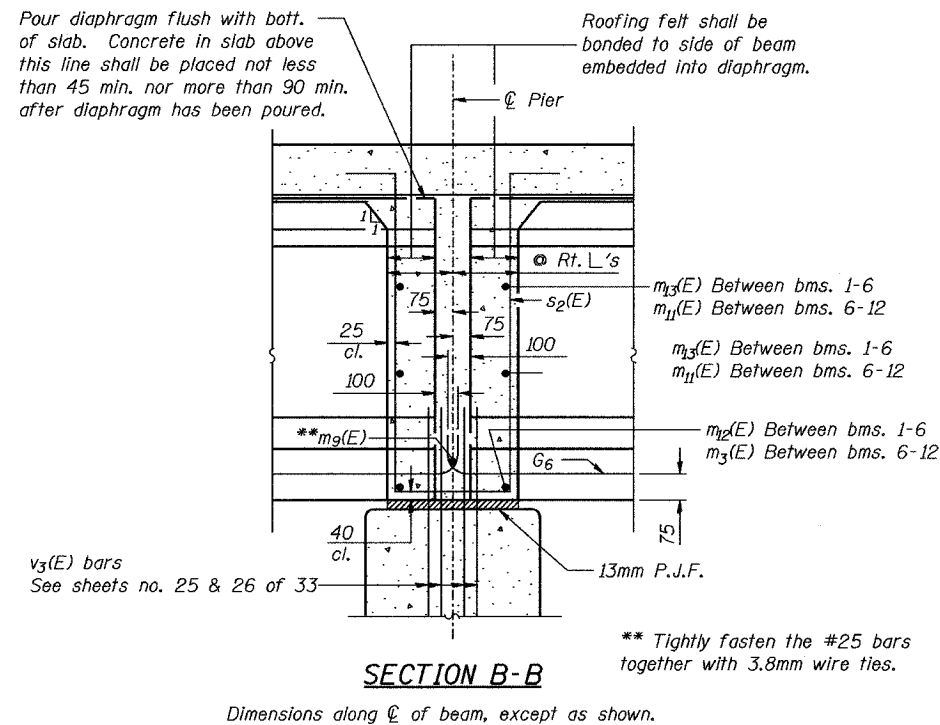
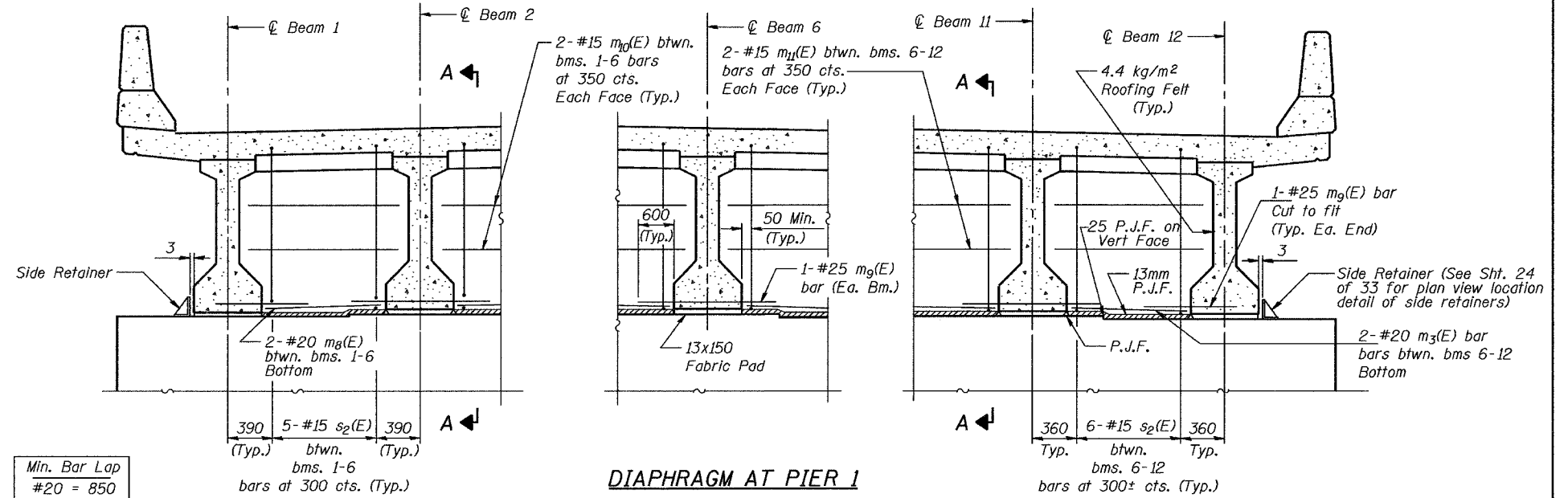
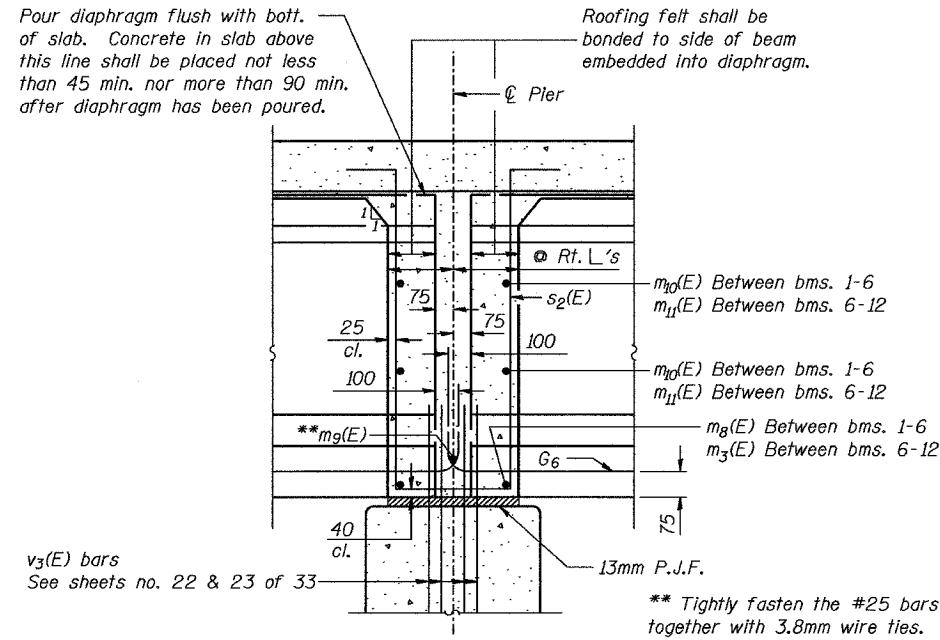


ROUTE NO.	SECTION	COUNTY	TOTAL SHEETS	SHEET NO.
F.A.I. 74	190-11VB1B	TAZEWELL	1366	405
FED. ROAD DIST. NO. 7 ILLINOIS FED. AID PROJECT-				

STATE OF ILLINOIS
DEPARTMENT OF TRANSPORTATION



Equivalent rolled angle with stiffeners will be allowed in lieu of welded plates.

NOTES:

- Reinforcement bars in diaphragm are billed with superstructure on sheet no. 11 of 33.
- Concrete in diaphragm is included with Concrete Superstructure on sheet no. 11 of 33.
- For details of bars $s_2(E)$ see sheet no. 11 of 33.
- The $s_1(E)$ and $s_2(E)$ bars shall be placed parallel to the beams.
- Spacing for these bars shall be at right angles to the beams.
- Cost of 4.4 kg/m roofing felt is included with Concrete Superstructure.
- Cost of Side Retainers is included with Concrete Structures.
- All dimensions are in millimeters (mm) except as noted.

PIER DIAPHRAGM DETAILS				Sheet No.
Date	Designed	JML	INTERSTATE 74 AND RAMPS J-4 OVER ALTORFER LANE AND TP&W R.R. F.A.I. RTE. 74 SECTION (90-11VB)BR TAZEWELL COUNTY STATION 152+685.353 STRUCTURE NO. 090-0159 (WB)	17
Revisions	Drawn	KDK		
	Checked	RME		
	Approved	DLC		
Date: 7-21-04				of 33
URS CORPORATION ST. LOUIS, MO				URS Job No. 2100001243.02