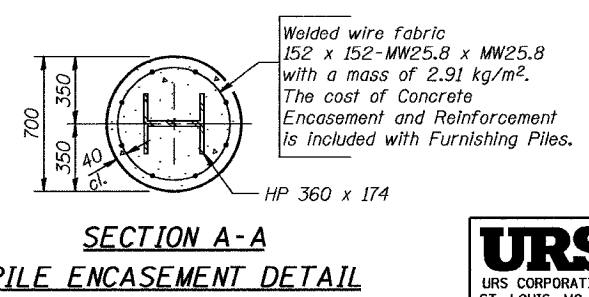
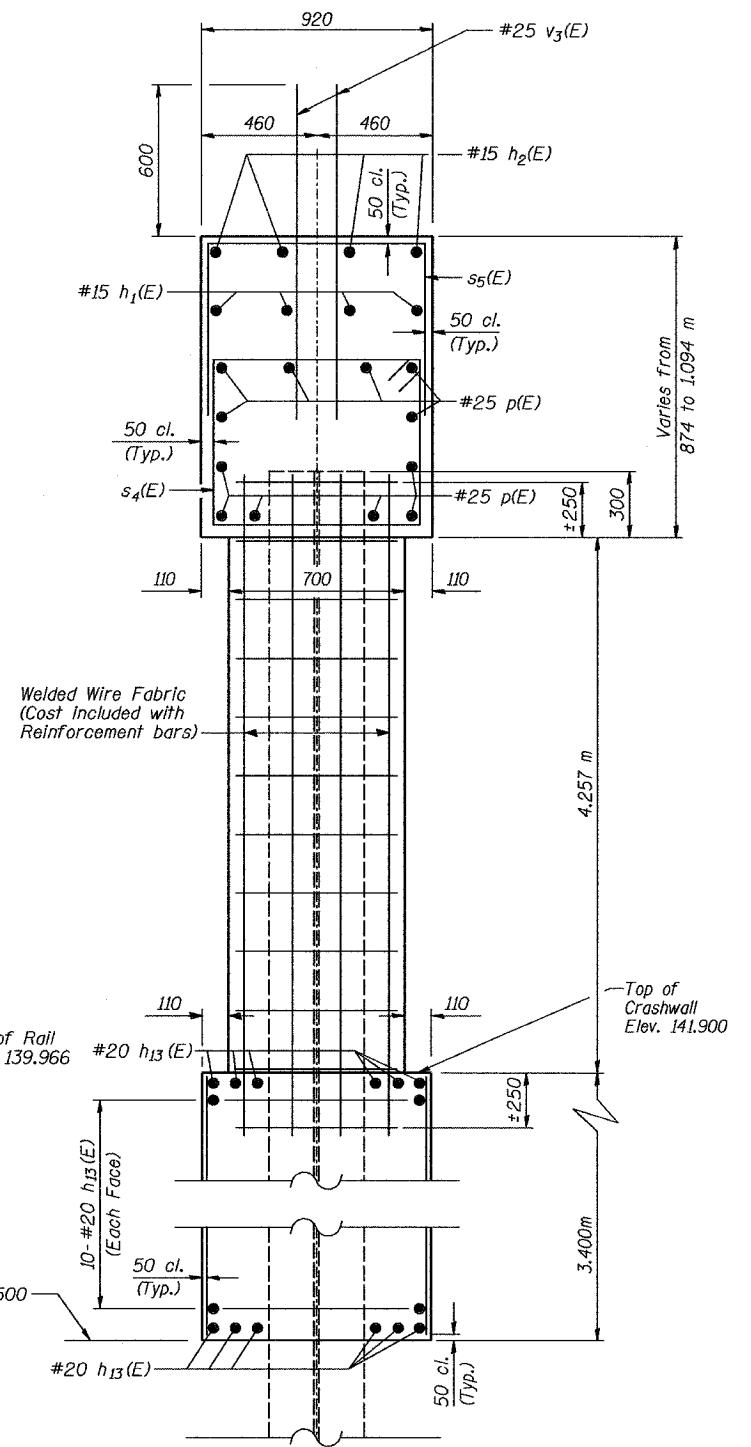
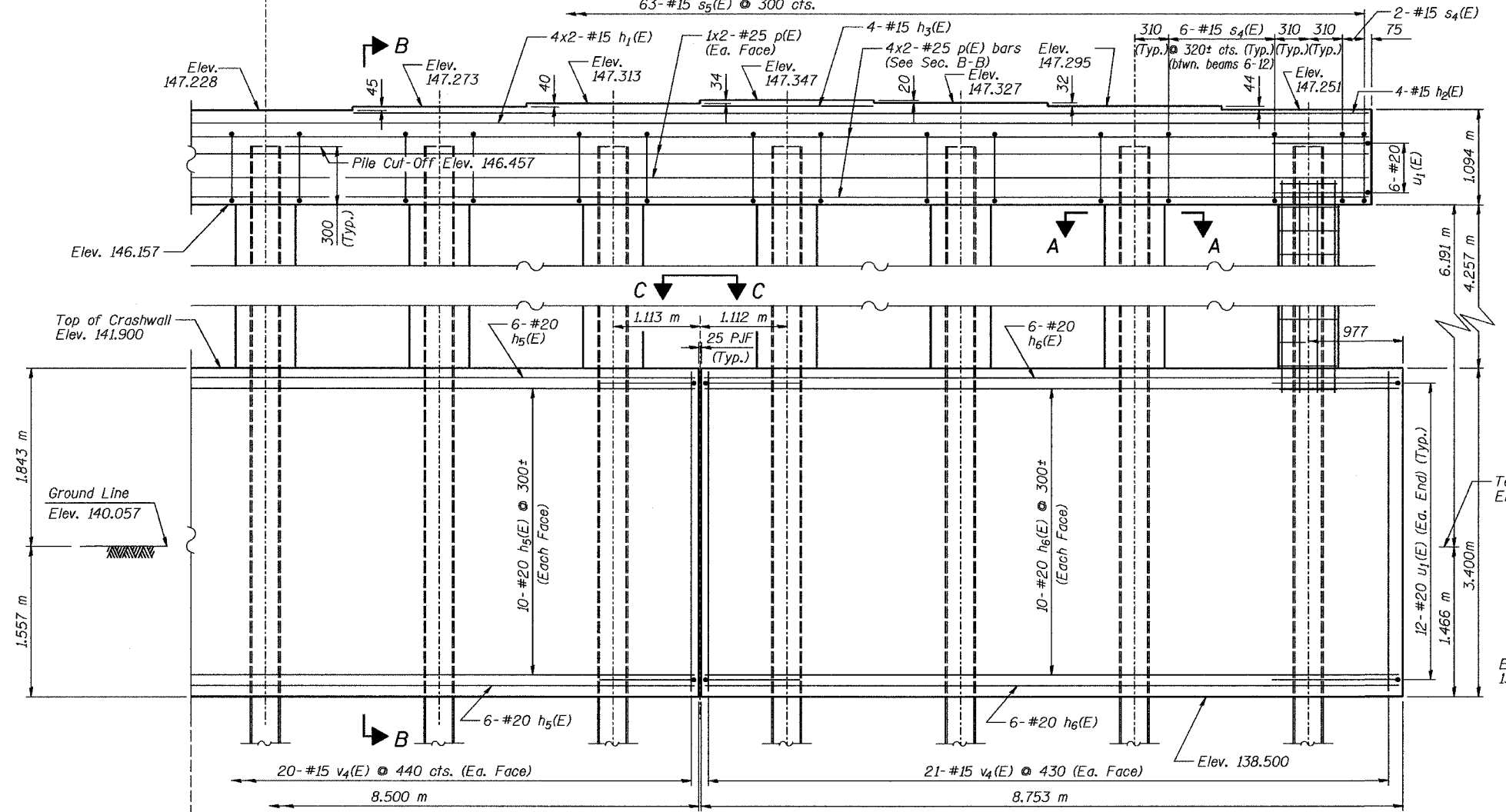
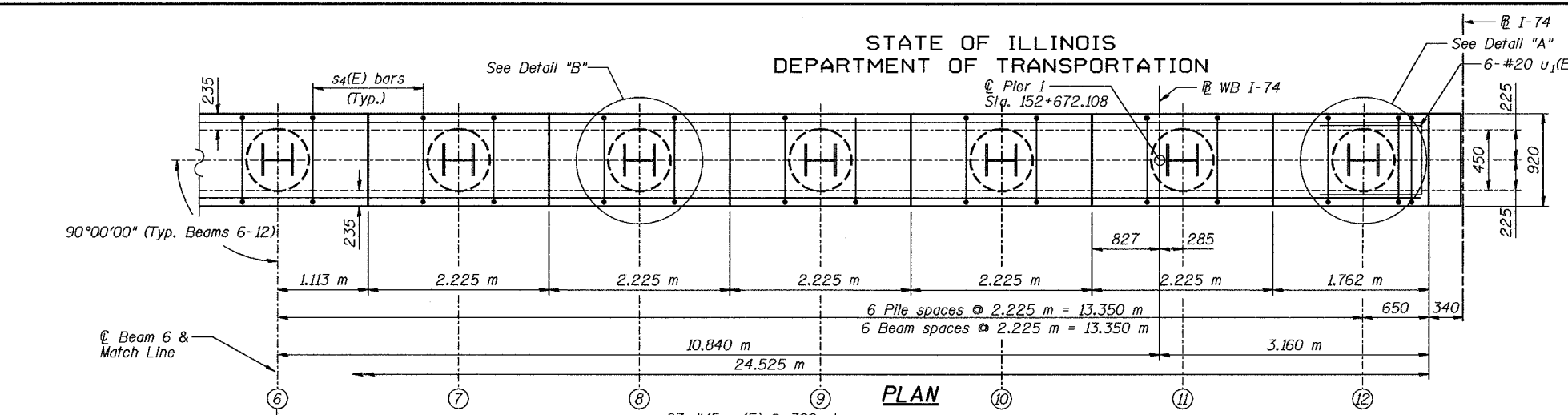


ROUTE NO.	SECTION	COUNTY	TOTAL SHEETS	SHEET NO.
F.A.I. 74	90-11VB	TAZEWELL	1306	411
FED. ROAD DIST. NO. 7		ILLINOIS	FED. AID PROJECT-	

STATE OF ILLINOIS
DEPARTMENT OF TRANSPORTATION



NOTE: See Sheet #24 of 33 for Detail A, Detail B, View C-C, and Bill of Material. All edges shall have standard 20mm chamfers, except as noted. Bars indicated thus 12x4-#15 etc. indicates 12 lines of Bars with 4 lengths per line. See Sheet #24 of 33 for Drainage System details.

Date		Designed JML		PIER 1 INTERSTATE 74 AND RAMPS J-4 OVER ALTORFER LANE AND TP&W R.R. F.A.I. RTE. 74 SECTION (90-11VB)BR TAZEWELL COUNTY STATION 152+685.353 STRUCTURE NO. 090-0159 (WB)	Sheet No. 23 of 33
Revisions		Drawn KDK			
		Checked RME			
		Approved DLC			
		Date: 7-21-04			
URS CORPORATION ST. LOUIS, MO					
URS Job No. 2100001243.02					