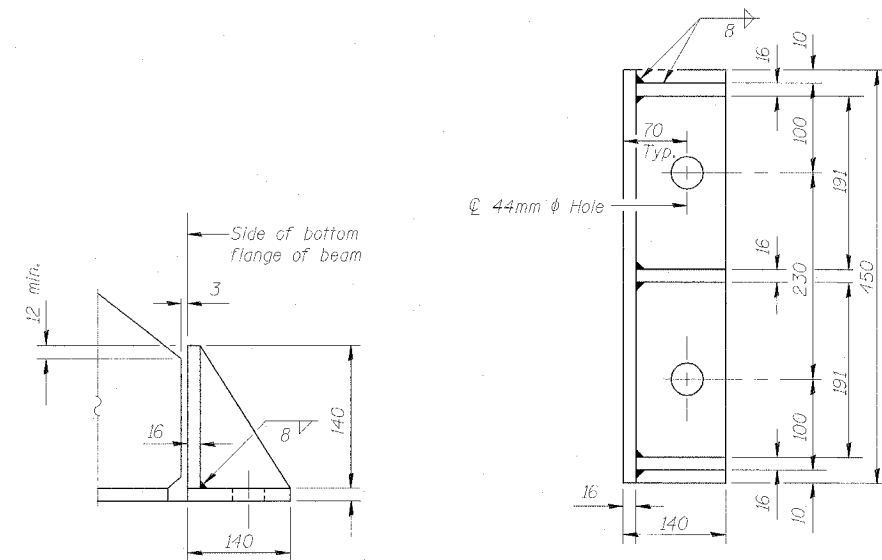


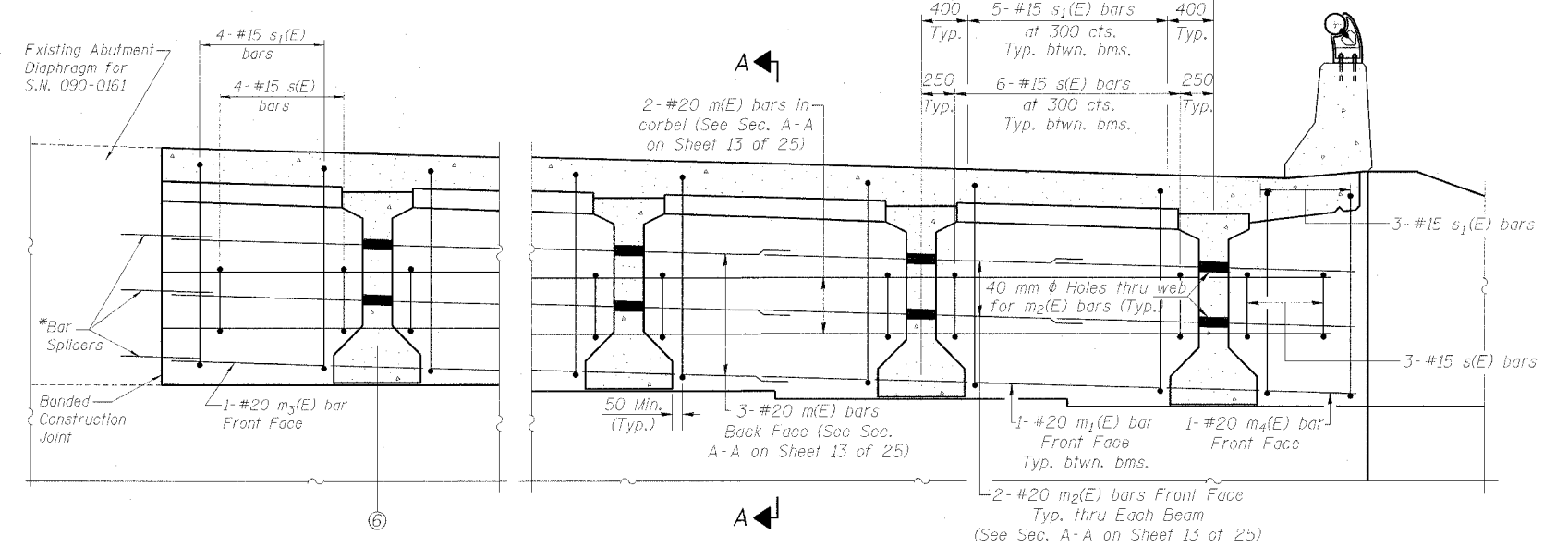
STATE OF ILLINOIS  
DEPARTMENT OF TRANSPORTATION

ROUTE NO.	SECTION	COUNTY	TOTAL SHEETS	SHEET NO.	SHEET NO. 12 25 SHEETS
S. B. I. P.A. 1-74	*	TAZEWELL	1366	434	
FED. ROAD DIST. NO. 7		ILLINOIS	FED. AID PROJECT		

\* (90-11HB)BR



**SIDE RETAINER**  
Equivalent rolled angle with stiffeners will be allowed in lieu of welded plates.

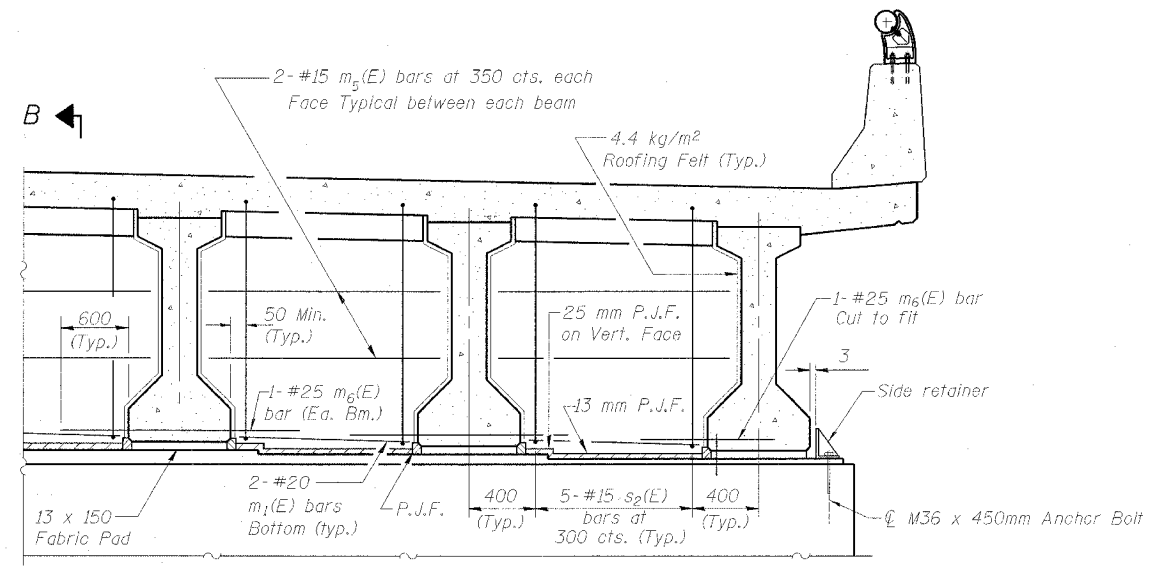


**DIAPHRAGM ELEVATION AT ABUTMENT**

**MIN. BAR. LAP**  
#20 bar = 1.1m

\*IDOT shall supply (from Stage I Construction) the unused portion of the bar splicers to the Contractor with the correct Structure No. and size on them. These formerly unused portions shall be installed by Contractor. Cost is included with "Reinforcement Bars, Epoxy Coated."

- Notes:
- Reinforcement bars in diaphragm are billed with superstructure on sheet 9 of 25.
  - Concrete in diaphragm is included with Concrete Superstructure on sheet 9 of 25.
  - For details of bars s(E) & s1(E) see sheet 9 of 25.
  - The s(E) and s1(E) bars shall be placed parallel to the beams. Spacing for these bars shall be at right angles to the beams.
  - For anchor bolt details see sheet 20 of 25.
  - All dimensions are in millimeters (mm) except as noted.
  - For Sections A-A and B-B see sheet 13 of 25.
  - The side retainer shall be galvanized after shop fabrication according to AASHTO M111 and ASTM A 385. Cost of side retainer and anchor bolts shall be included with "Concrete Structures."
  - Bars indicated thus 20x3-#15 etc. indicates 20 lines of bars with 3 lengths per line.



**DIAPHRAGM AT PIER**  
(Fixed)

Note: Section B-B is shown on Sheet 13 of 25.

DESIGNED	KEF
CHECKED	KEF
DRAWN	DEM
CHECKED	KEF

**DIAPHRAGM DETAILS**  
WB INTERSTATE 74 OVER  
MAIN STREET (IL. RTE. 116)  
F.A.I. ROUTE 74 - SEC. (90-11HB)BR  
TAZEWELL COUNTY  
STATION 153+050.716  
STRUCTURE NO. 090-0160

