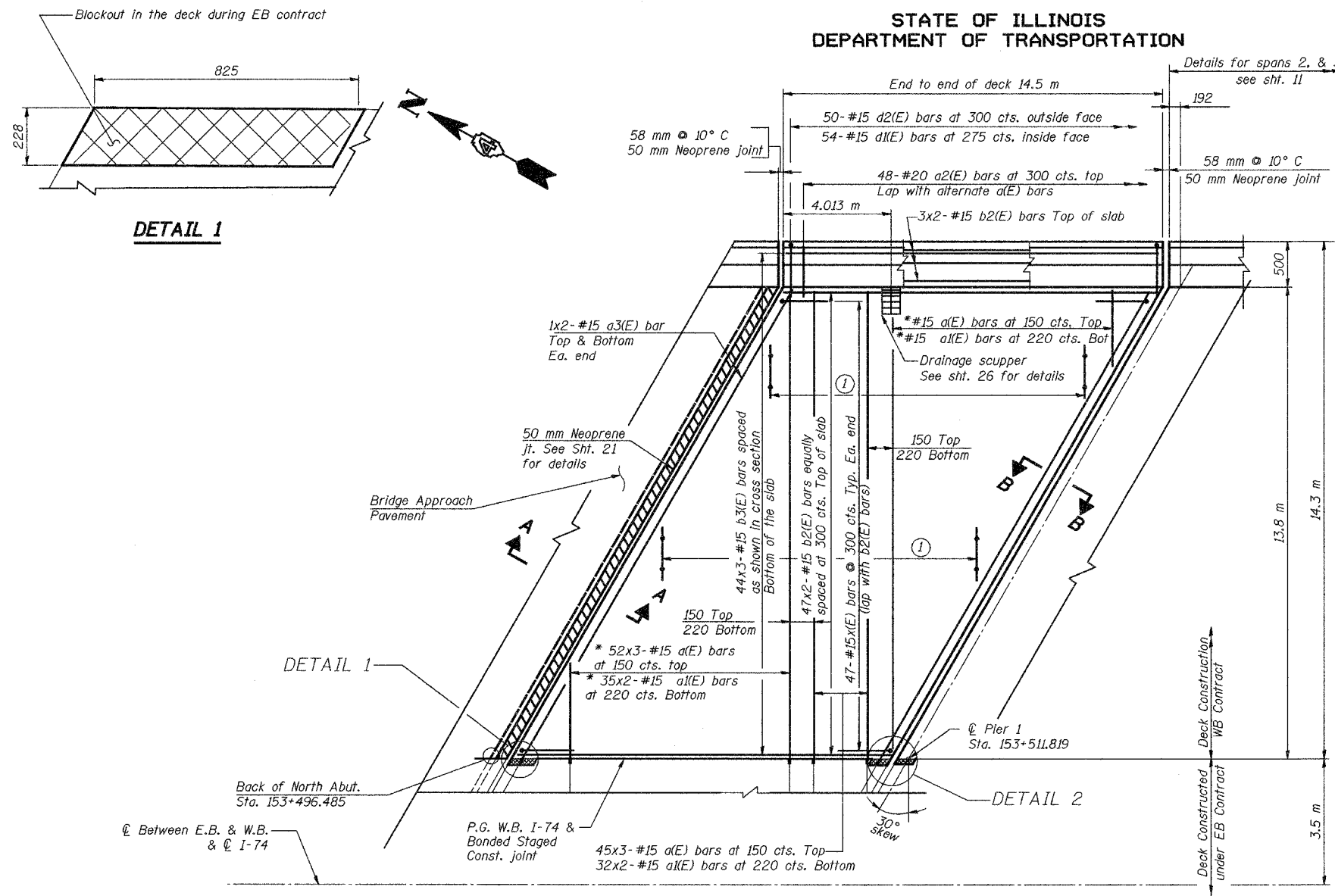


ROUTE NO.	SECTION	COUNTY	TOTAL SHEETS	SHEET NO.
F.A.I. 74	90-13HVB/BY	TAZEWELL	1366	158
FED. ROAD DIST. NO. 7	ILLINOIS	FED. AID PROJECT		

SHEET NO. 10
68 SHEETS

STATE OF ILLINOIS
DEPARTMENT OF TRANSPORTATION



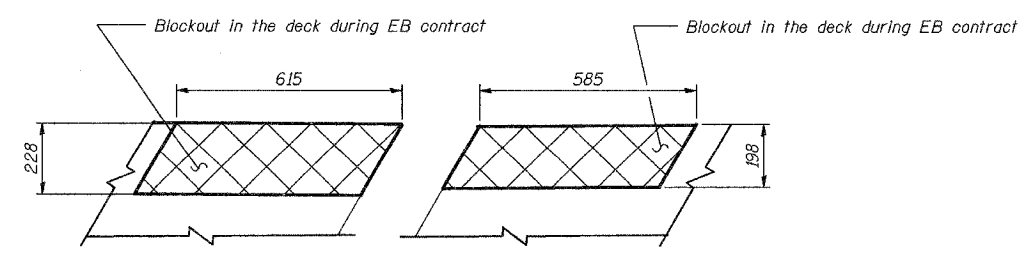
① 49- #15 d15(E) bars @ 300 cts. see cross-section for details

- Notes:
1. Work this sheet with sheet No's 11 through 20.
 2. Reinforcement bars designated (E) shall be Epoxy Coated.
 3. For Neoprene Expansion Joint Details see sheet No. 21.
 4. Cut longitudinal reinforcement bars to clear drainage scupper.
 5. Bars indicated thus "67x4 - #15 etc." indicates 67 lines of bars with 4 lengths per line.
 6. Min. bar lap for a #15 bar shall be 510 mm.
 7. For bill of materials and reinforcement details see sht. 18.
 8. Hatched area to be poured after superstructure forms have been removed. Quantity of Concrete included with Concrete Superstructure.
 9. See sht. 17 for Sections A-A and B-B.
 10. See sht. 17 for reinforcement details around scupper.
 11. The remaining portions of the bar splicers provided for the WB deck under EB contract shall be obtained from the Engineer by the Contractor and shall be incorporated in the WB deck reinforcement.
 12. The Contractor shall pour the deck at skew.

LEGENDS

- Deck blockout area provided during EB contract.
- Hatched area, see note 8.

* Order a(E) and a1(E) bars full length. Cut to fit skew and use remainder of bars in opposite end.



DETAIL 2

S-1-L(>15°) (M) 4-30-99

DECK REINFORCEMENT SPAN 1			Sheet No.
Date	Designed	EV	10
Revisions	Drawn	EV	
	Checked	NPP	
	Approved	NPP	
Prepared By: BRW, Inc. A Division of URS			of 68
1701 Golf Rd., Suite 1000 Rolling Meadows, IL.			BRW Job No. 17049-071