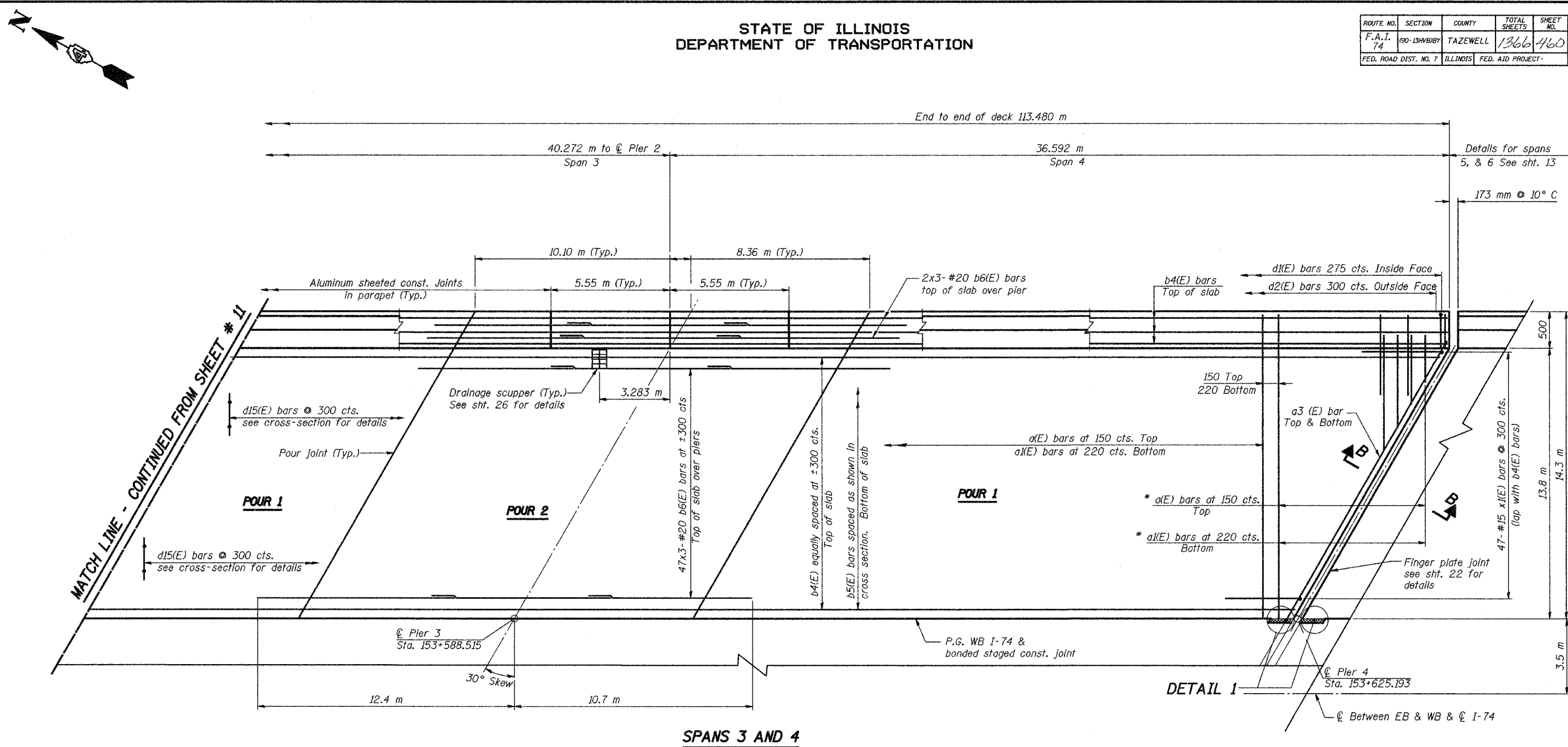


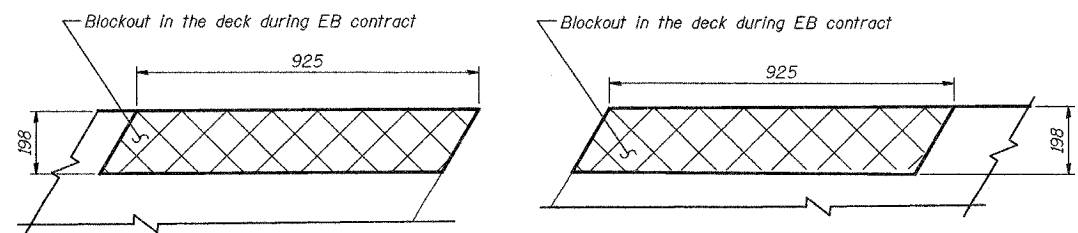
STATE OF ILLINOIS  
DEPARTMENT OF TRANSPORTATION

ROUTE NO.	SECTION	COUNTY	TOTAL SHEETS	SHEET NO.
F.A.I. 74	90-13HVB/BY	TAZEWELL	1366	460
FED. ROAD DIST. NO. 7	ILLINOIS	FED. AID PROJECT-		

SHEET NO. 12  
68 SHEETS



SPANS 3 AND 4



DETAIL 1

LEGEND

Deck blockout area provide during EB contract.

- Notes:
1. Work this sheet with sheets 10, 11 and 13 through 20.
  2. Reinforcement bars designated (E) shall be Epoxy Coated.
  3. For Neoprene Expansion Joint Details see sheet No. 21.
  4. Cut longitudinal reinforcement bars to clear drainage scupper.
  5. Bars indicated thus "60x4 - #15 etc." indicates 60 lines of bars with 4 lengths per line.
  6. Min. bar lap for a #15 bar shall be 510 mm and for #20 bar shall be 790 mm.
  7. For bill of materials and reinforcement details see sht. 18.
  8. For reinforcement details not shown on this sht. see sht. 11.
  9. See sht. 22 for Section B-B.
  10. The remaining portions of the bar splicers provided for the WB deck under EB contract shall be obtained from the Engineer by the Contractor and shall be incorporated in the WB deck reinforcement.
  11. The Contractor shall pour the deck at skew.

\* Order a(E) and a1(E) bars full length. Cut to fit skew and use remainder of bars in opposite end see sht. 11.

DECK REINFORCEMENT SPANS 3 & 4			
Date	Designed	EV	WESTBOUND F.A.I. ROUTE 74 OVER CAMP STREET, FARM CREEK, AND TP&W RR F.A.I. RTE. 74 SECTION (90-13HVB)BY TAZEWELL COUNTY STATION 153+625.193 STRUCTURE NO. 090-0009
Revisions	Drawn	EV	
	Checked	NPP	
	Approved	NPP	
	Prepared By:	BRW, Inc. A Division of URS	
		1701 Golf Rd., Suite 1000 Rolling Meadows, IL.	Sheet No. <b>12</b> of 68 BRW Job No. 17049-071

S-1-L(>15°) (M) 4-30-99  
17049.071/pre\_Final\_plans/174\_eb/deckspan3-4