

STATE OF ILLINOIS
DEPARTMENT OF TRANSPORTATION

ROUTE NO.	SECTION	COUNTY	TOTAL SHEETS	SHEET NO.
F.A.I. 74	190-13HVB/BY	TAZEWELL	1366	463
FED. ROAD DIST. NO. 7 ILLINOIS			FED. AID PROJECT-	

SHEET NO. 21
68 SHEETS

Joint Size	"C" at 10°C	"D" at 10°C
50	50	40 Min.
65	65	45 Min.
100	75	65 Min.

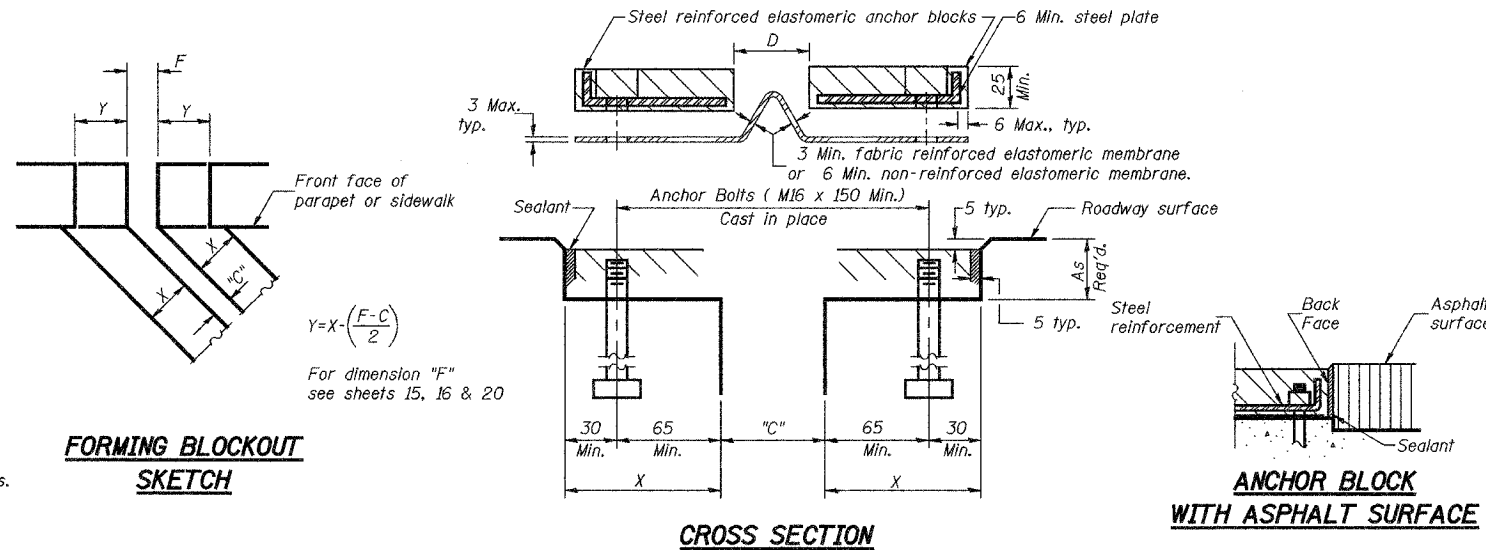
INSTALLATION NOTES

- Install continuous seal in roadway, parapet, curb, and sidewalk.
- Install anchor blocks as indicated.

NOTE A: Maximum spacing of anchor bolts shall be 300 centers.

SKEW LIMITATIONS

The details of the anchor blocks and the elastomeric membrane in the parapet, as shown, are for up to 50° skews. For skews greater than 50°, the anchor blocks and the elastomeric membrane, installed according to dimension "D", might require modifications to insure a minimum clearance of 1/2" from centerline of anchor studs to edge of parapet opening. The anchor blocks and the elastomeric membrane shall also be installed to the top of the parapet with the anchor studs spaced at ±300 cts.

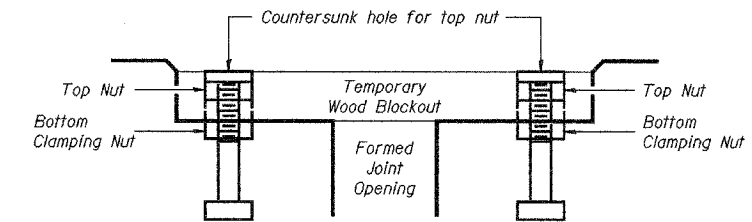
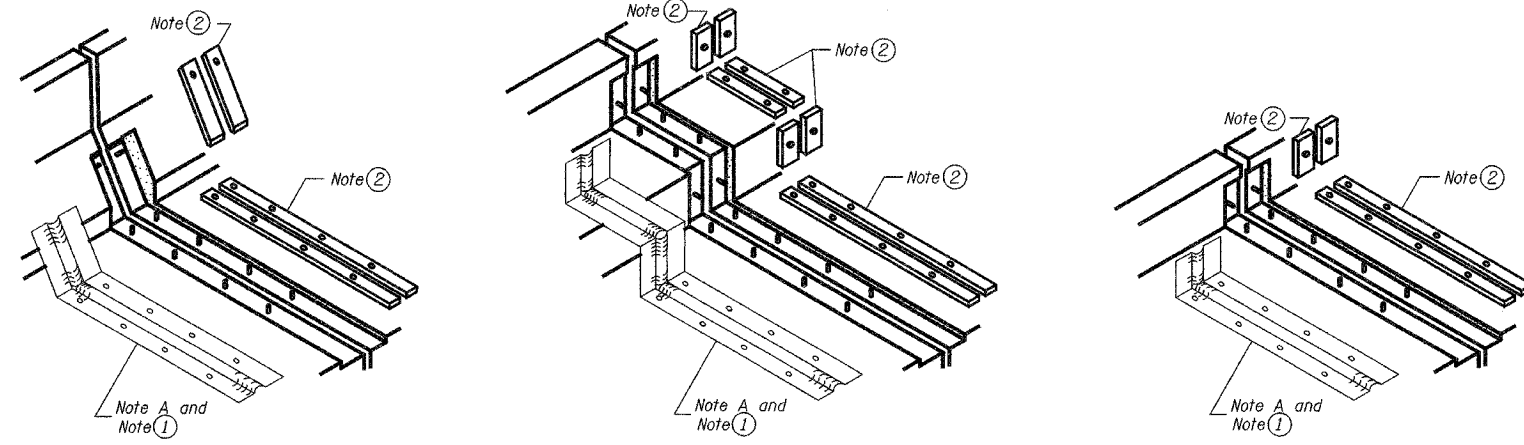


GENERAL NOTES

Continuous Seal Neoprene Expansion Joint shall consist of molded anchor blocks of elastomer and steel, field assembled over continuous lengths of elastomeric membrane.
The elastomeric membrane shall be premolded with a single or a double upward convolution that will have a "memory" to return to its molded position upon joint closure.
The convolution length shall be such that the extended length will not be greater than the manufactured length when the joint is fully expanded in its design range and will not protrude above the anchor blocks when the joint is fully compressed.
Joint openings shall be adjusted according to Article 503.10(c) of the Standard Specifications when the deck is poured at an ambient temperature other than 10° C.
The parapet and roadway membrane shall be made continuous by an approved vulcanizing process. Lapping will not be permitted.

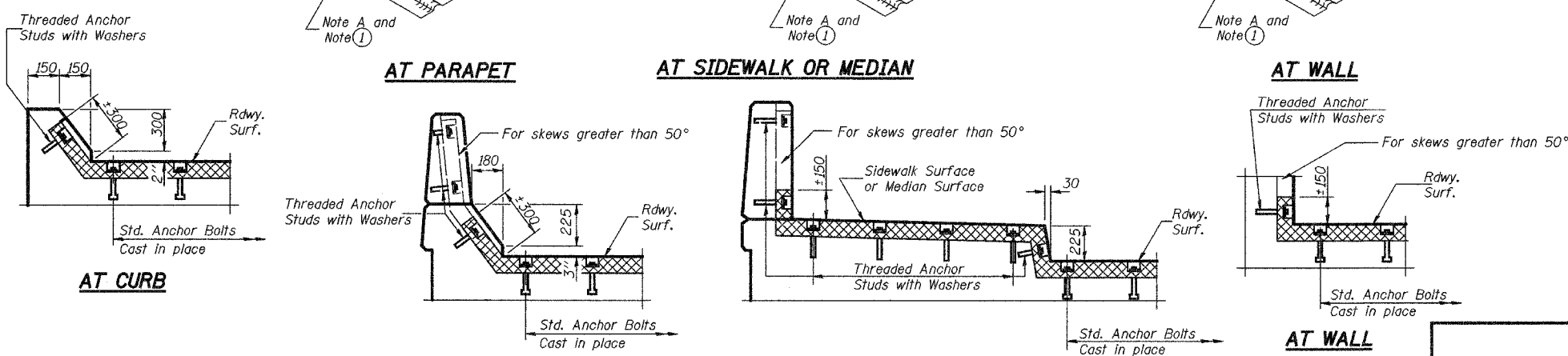
BILL OF MATERIAL

ITEM	UNIT	TOTAL
Neoprene Expansion Joint 50 mm	Meter	80



Note: Stud needs to be threaded lower to allow for use of clamping nut.

Anchor studs should be stainless
RECOMMENDED BLOCKOUT DETAIL



TYPICAL END TREATMENTS

CONTINUOUS SEAL TYPE NEOPRENE EXPANSION JOINTS

NEOPRENE EXPANSION JOINTS			Sheet No.
Date	Designed NPP	WESTBOUND F.A.I. ROUTE 74 OVER CAMP STREET, FARM CREEK, AND TP&W RR F.A.I. RTE. 74 SECTION (90-13HVB)BY TAZEWELL COUNTY STATION 153+625.193 STRUCTURE NO. 090-0009	21
Revisions	Drawn SOI		
	Checked JPB		
	Approved NPP		
Prepared By:	BRW, Inc. A Division of URS	1701 Golf Rd., Suite 1000 Rolling Meadows, IL.	BRW Job No. 17049-071