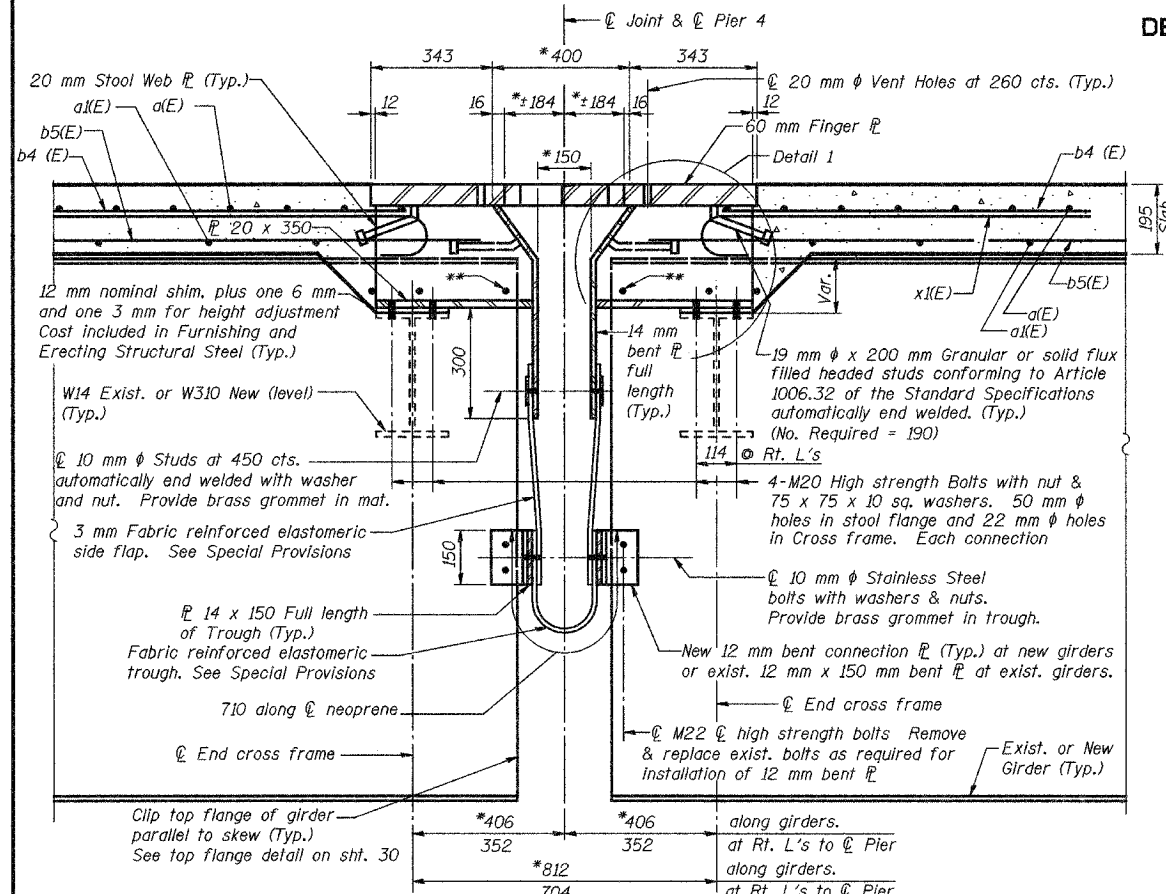


STATE OF ILLINOIS
DEPARTMENT OF TRANSPORTATION

ROUTE NO.	SECTION	COUNTY	TOTAL SHEETS	SHEET NO.
F.A.I. 74	90-13HVB/BY	TAZEWELL	1366	470
FED. ROAD DIST. NO. 7 ILLINOIS			FED. AID PROJECT	

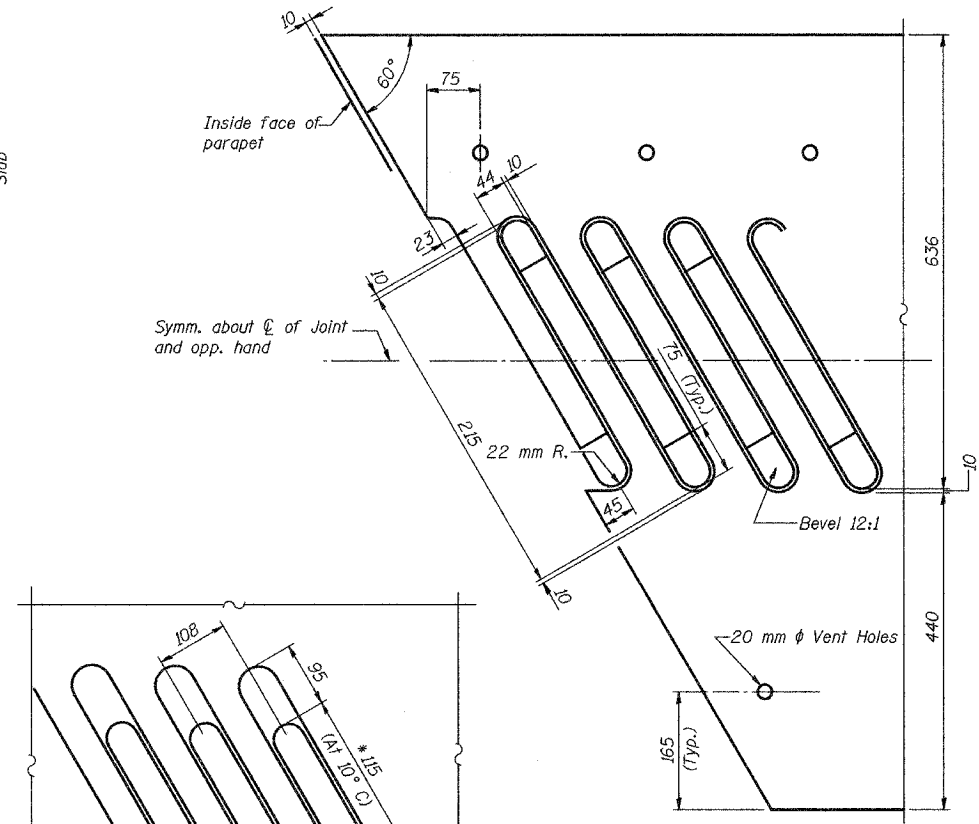
SHEET NO. 22
68 SHEETS



* At 10° C
** Cut bars in field to fit between stools.

SECTION B-B
(Looking North)

Tapered shims shall be added under the stools as required by the Engineer to make a smooth finger plate joint
According to the exist. plans the end of girders and bearing stiffeners are vertical and the diaphragms are level. The Contractor shall verify in the field prior to ordering materials.

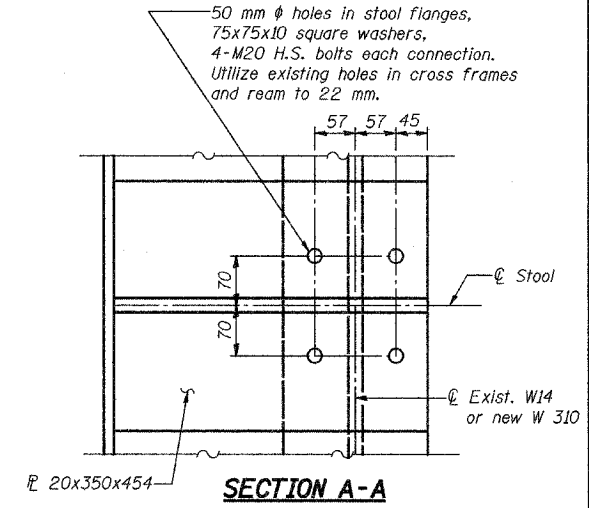


FINGER PLATE CUTTING DIAGRAM

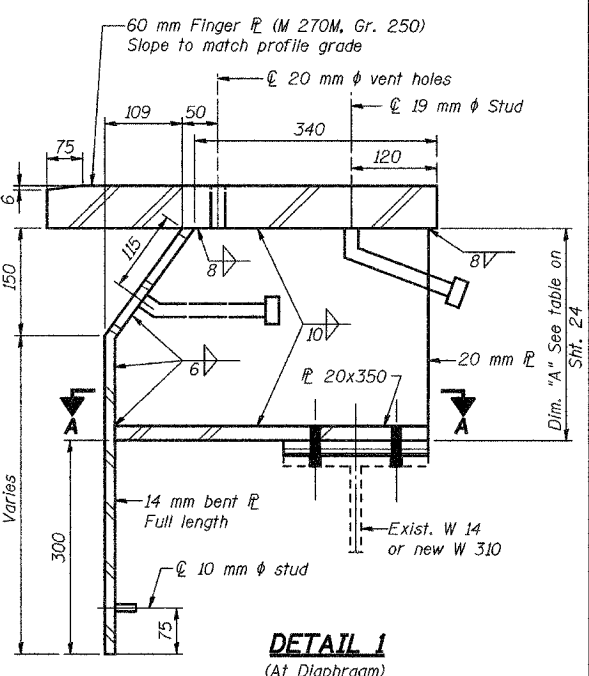
(\bar{L} 60 x 1086 x 15.924 m along skew one required)



FINGER PLATE SPLICE DETAIL

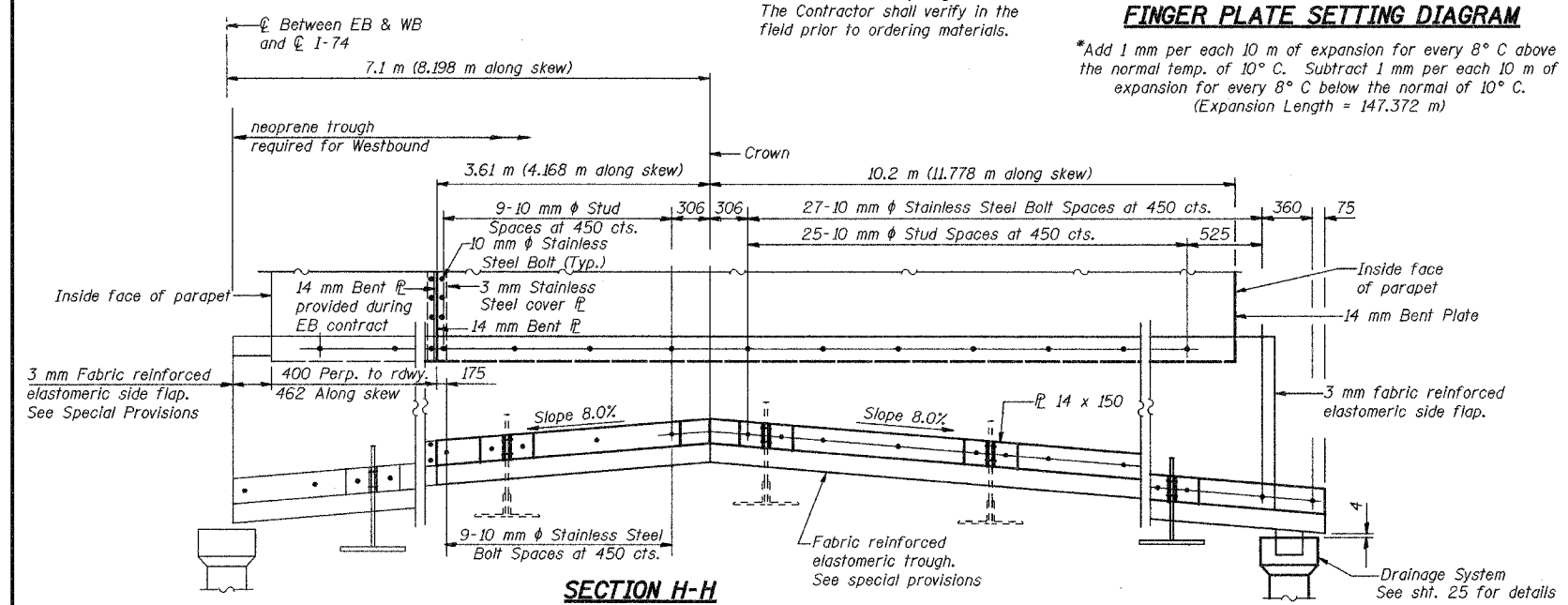


SECTION A-A



DETAIL 1
(At Diaphragm)

- Notes:
1. See shts. 12, 13 and 23 for Section B-B.
 2. See sht. 25 for Detail 1 at Girders.
 3. See sht. 24 for stool spacings.
 4. See sht. 23 for location of Section H-H.



SECTION H-H

FINGER PLATE EXPANSION JOINT DETAILS			
Date	Designed	EV	WESTBOUND F.A.I. ROUTE 74 OVER CAMP STREET, FARM CREEK, AND TP&W RR F.A.I. RTE. 74 SECTION (90-13HVB)BY TAZEWELL COUNTY STATION 153+625.193 STRUCTURE NO. 090-0009
Revisions	Drawn	EV	
	Checked	NPP	
	Approved	NPP	
Prepared By:		BRW, Inc. A Division of URS	1701 Golf Rd., Suite 1000 Rolling Meadows, IL.

Sheet No.
22
of 68
BRW Job No.
17049-071