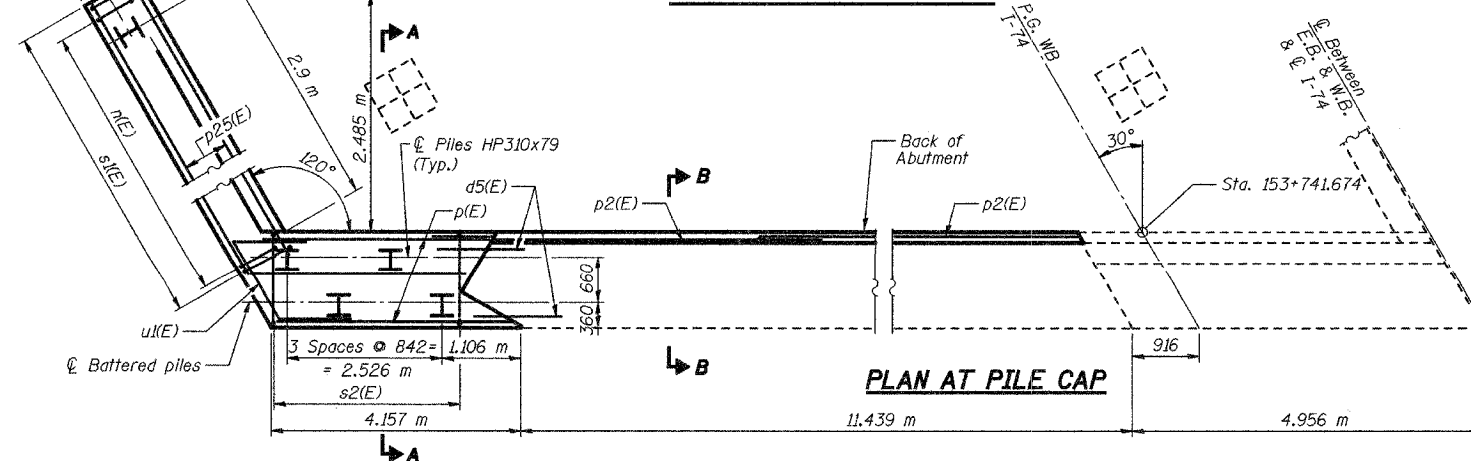
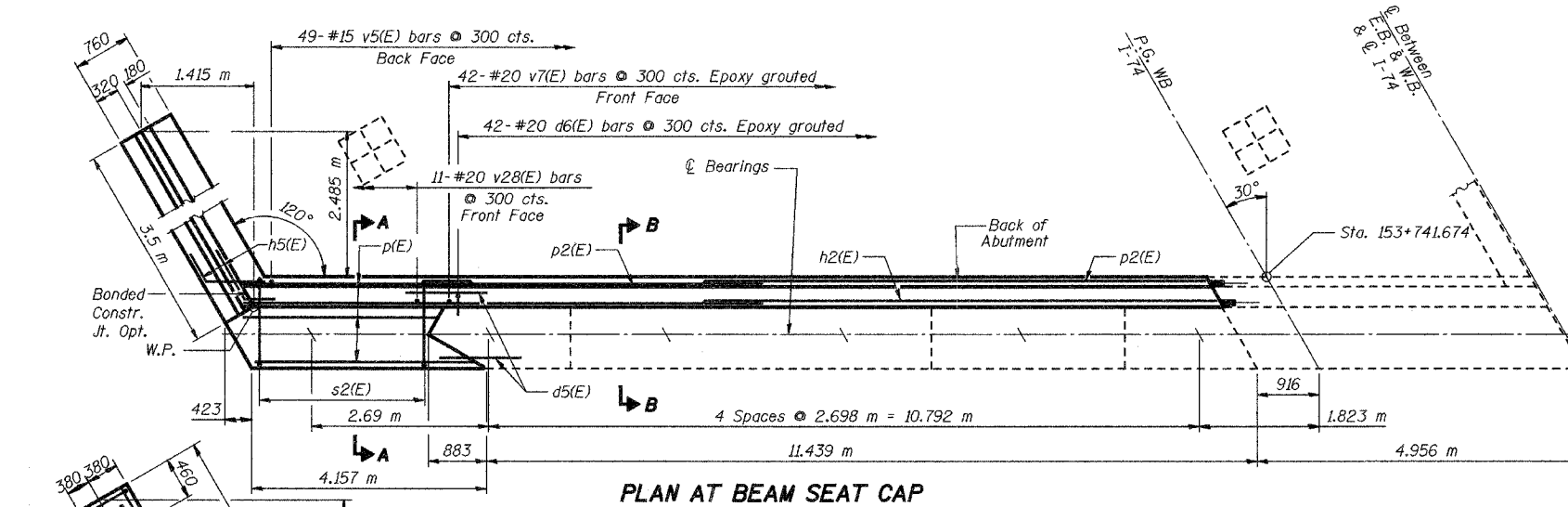
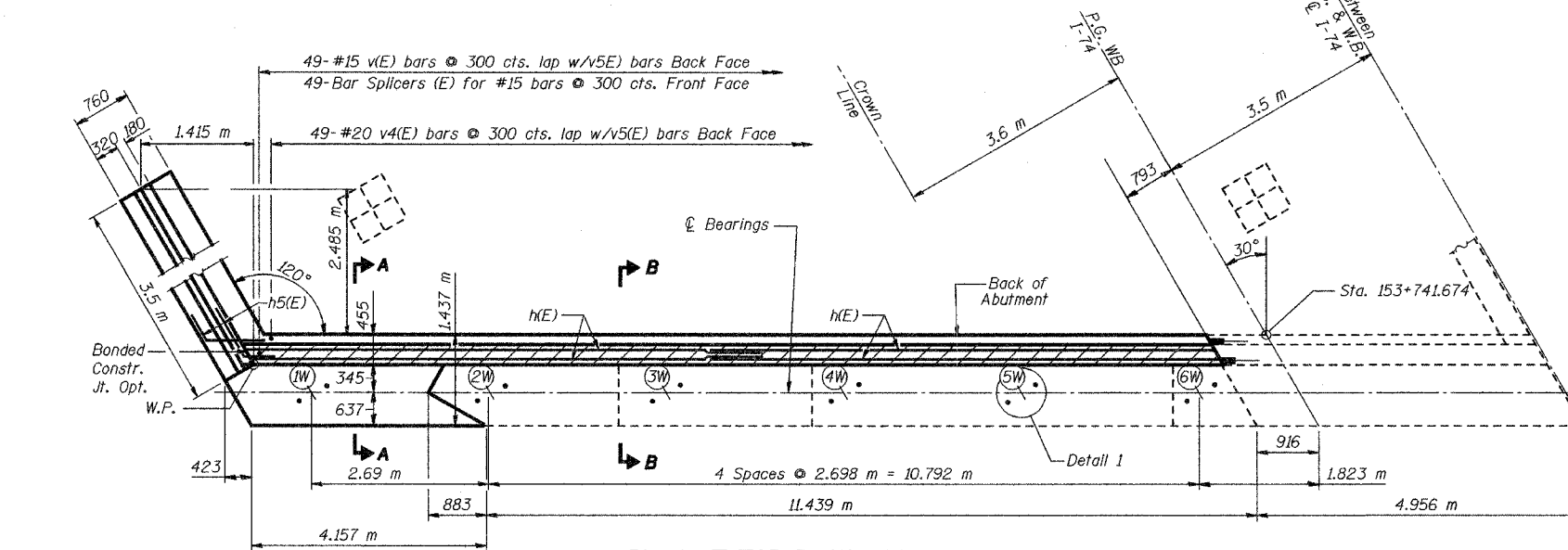


STATE OF ILLINOIS
DEPARTMENT OF TRANSPORTATION

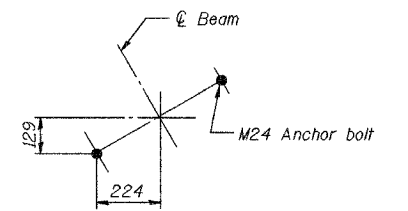
ROUTE NO.	SECTION	COUNTY	TOTAL SHEETS	SHEET NO.
F.A.I. 74	90-13HVB	TAZEWELL	1366	494
FED. ROAD DIST. NO. 7	ILLINOIS	FED. AID PROJECT-		

SHEET NO. 46
68 SHEETS



PILE DATA

Type: Steel HP310x79 Piles
Capacity: Driven to Refusal
Est. Length: 22 m
No. Required: 5 (4+1 Test Pile)
Test pile driven to 95 metric ton



- NOTES:
1. Work this Sheet with Sheets 47 and 48.
 2. See Sheet 47 for Notes.
 3. See Sheet 42 for abutment removal details.
 4. All dimensions are in millimeters (mm) except as noted.
 5. Reinforcement bars designated (E) shall be epoxy coated.

Date		Designed	EV	WESTBOUND F.A.I. ROUTE 74 OVER CAMP STREET, FARM CREEK, AND TP&W RR F.A.I. RTE. 74 SECTION (90-13HVB)BY TAZEWELL COUNTY STATION 153+625.193 STRUCTURE NO. 090-0009	Sheet No. 46 of 68
Revisions		Drawn	EV		
		Checked	NPP		
		Approved	NPP		
Prepared By: BRW, Inc. A Division of URS			1701 Golf Rd., Suite 1000 Rolling Meadows, IL.	BRW Job No. 17049-071	