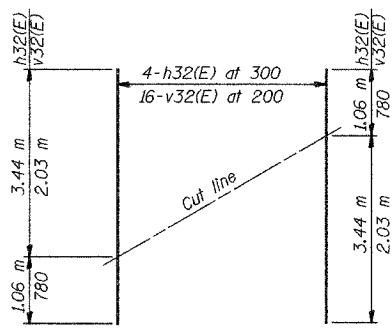
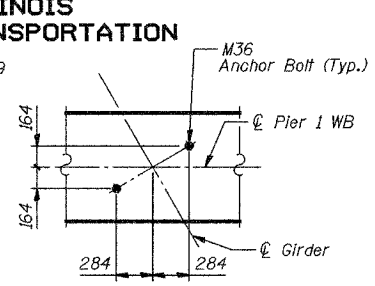
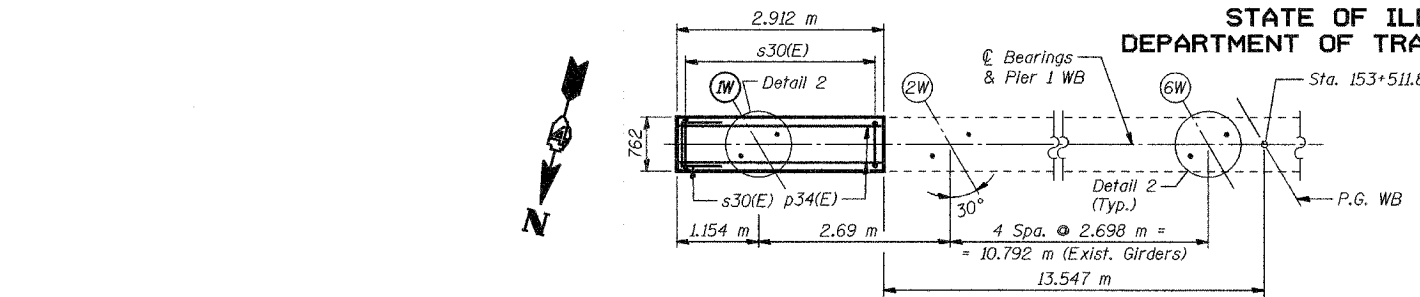


STATE OF ILLINOIS
DEPARTMENT OF TRANSPORTATION

ROUTE NO.	SECTION	COUNTY	TOTAL SHEETS	SHEET NO.
F.A.I. 74	90-13HVB/BY	TAZEWELL	306	500
FED. ROAD DIST. NO. 7		ILLINOIS	FED. AID PROJECT	

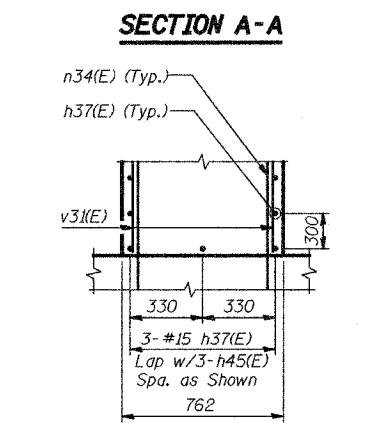
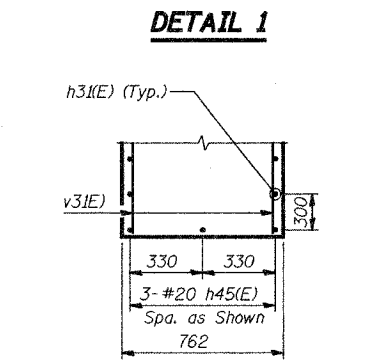
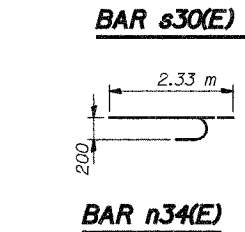
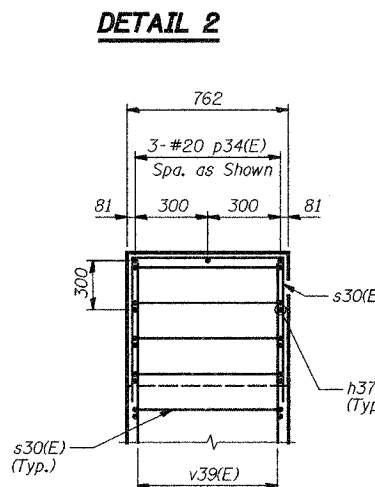
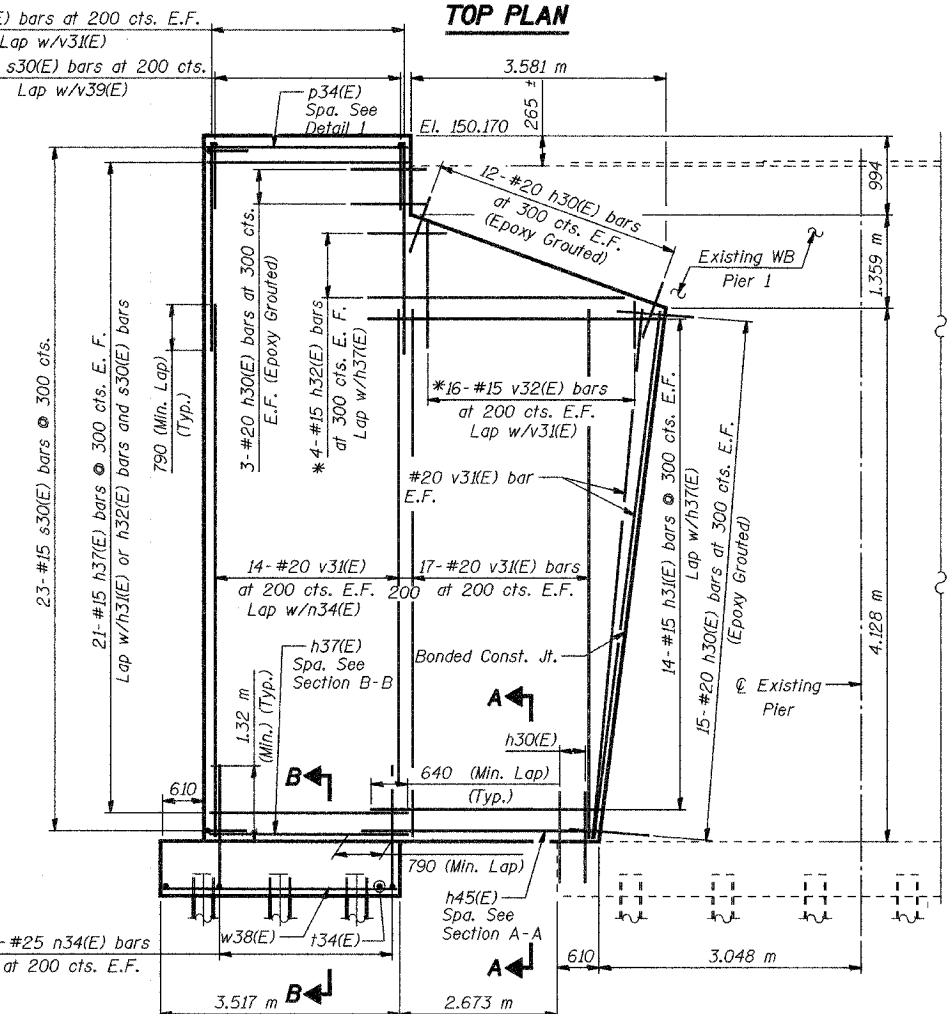
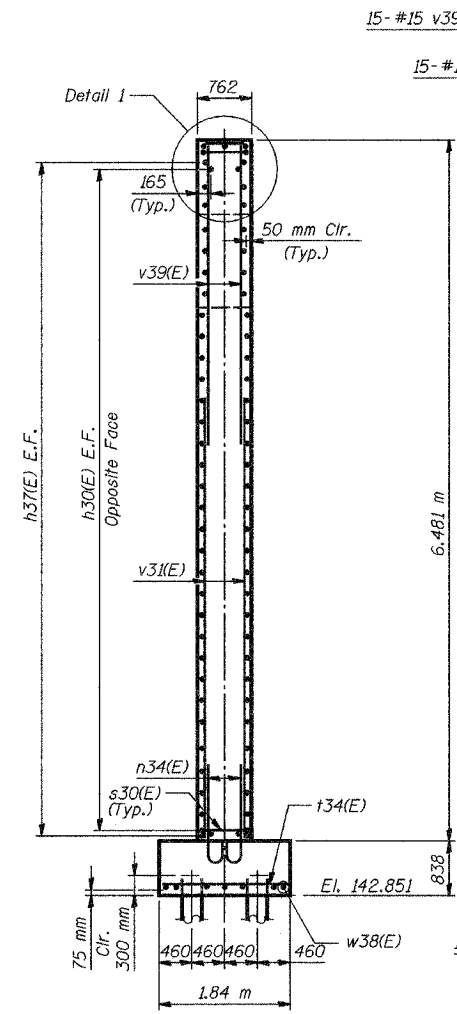
SHEET NO. 52
68 SHEETS



BILL OF MATERIAL

Bar	No.	Size	Length (m)	Shape
h30(E)	66	#20	1.00	—
h31(E)	28	#15	4.3	—
h32(E)	4	#15	4.5	—
h37(E)	45	#15	2.81	—
h45(E)	3	#20	4.1	—
n34(E)	28	#25	2.33	⌋
p34(E)	3	#20	2.81	—
s30(E)	38	#15	1.62	⌋
t34(E)	14	#25	1.74	—
v31(E)	66	#20	4.03	—
v32(E)	16	#15	2.81	—
v39(E)	30	#15	3.2	—
w38(E)	7	#15	3.4	—
Structure Excavation		m ³	22	
Concrete Structures		m ³	28	
Reinforcement Bars, Epoxy Coated		kg	1,960	
Furnishing Steel Piles HP360x108		m	40	
Driving Steel Piles		m	40	
Test Pile Steel HP360x108		Each	1	
Bridge Seat Sealer		m ²	11.9	

FIELD CUTTING DIAGRAM
* Order h32(E) and v32(E) bars full length. Cut to fit and use the remainder of bars in opposite face.

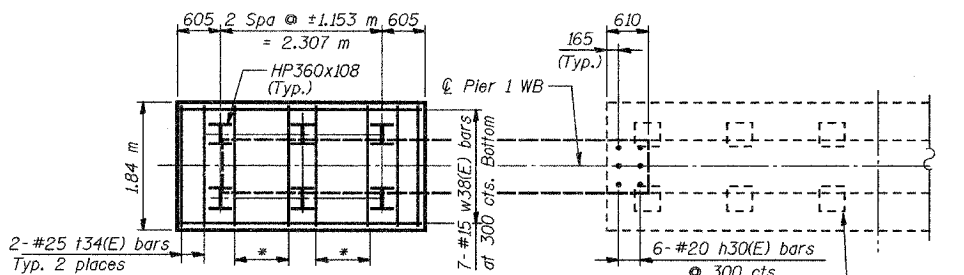


END VIEW

ELEVATION (LOOKING SOUTH)

PILE DATA

Type Steel HP 360x108
Capacity Driven to refusal
Est. Length 8 m
No. Required 6 (5 + 1 Test Pile)
Test pile driven to 131 metric ton



FOOTING PLAN

NOTES:

1. Reinforcement bars designated (E) shall be epoxy coated.
2. Concrete clear cover shall be 50 mm minimum unless noted otherwise.
3. Space Reinforcement in Cap to miss Anchor Bolts.
4. Epoxy Grout Bar h30(E) in minimum 230 mm deep drilled holes.
5. The material and installation shall be in accordance with IDOT Standard Specification Section 584.
6. Bonded Construction Joint at interface between existing concrete and proposed concrete shall be in accordance with Standard Specifications Article 503.09(a)(2).
7. For Anchor Bolt Details, see Sheet 41.
8. All edges shall have standard 20 mm chamfers except as noted.
9. Min. Lap for Bar #15=640 mm, #20=790 mm, #25=1.32 m.
10. Space h30(E) bar to miss existing reinforcement in Pier.
11. All dimensions are in millimeters (mm) except as noted.
12. Clean exist. WB Pier beam seats and apply Bridge Seat Sealer to new and the exist. beam seats.

PIER 1 EXTENSION DETAILS

Date	Designed EV	WESTBOUND F.A.I. ROUTE 74 OVER CAMP STREET, FARM CREEK, AND TP&W RR F.A.I. RTE. 74 SECTION (90-13HVB)BY TAZEWELL COUNTY STATION 153+625.193 STRUCTURE NO. 090-0009	Sheet No.
Revisions	Drawn EV		52
	Checked NPP		of 68
	Approved NPP		BRW Job No.
Prepared By: BRW, Inc. A Division of URS		1701 Golf Rd., Suite 1000 Rolling Meadows, IL.	17049-071