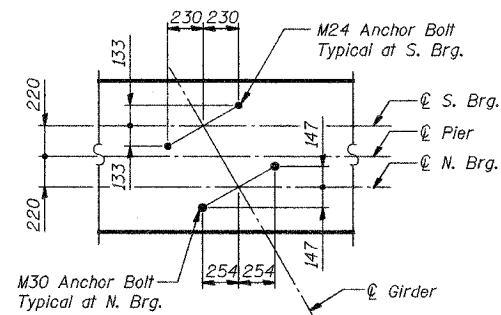


STATE OF ILLINOIS
DEPARTMENT OF TRANSPORTATION

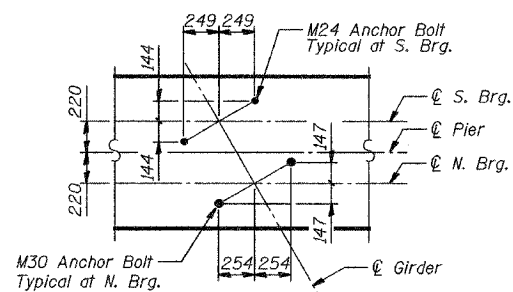
ROUTE NO.	SECTION	COUNTY	TOTAL SHEETS	SHEET NO.
F.A.I. 74	90-13HVB/BY	TAZEWELL	1366	508
FED. ROAD DIST. NO. 7	ILLINOIS	FED. AID PROJECT-		

SHEET NO. 60
68 SHEETS



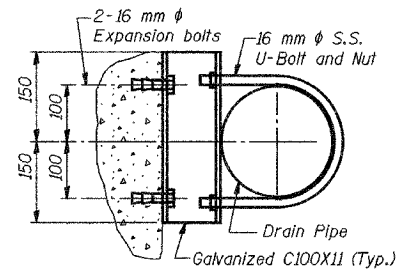
DETAIL 2

(Existing Girders 2W, 3W, 4W, 5W & 6W)

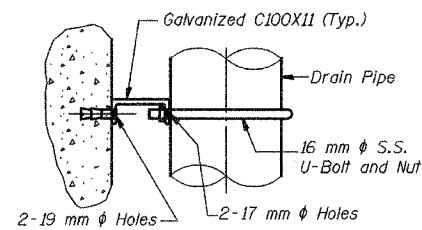


DETAIL 1

(New Girder 1W)

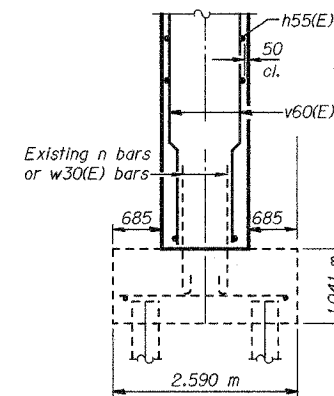


PLAN

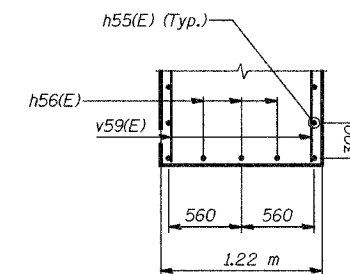


ELEVATION

TYPICAL PIPE SUPPORT DETAILS



SECTION A-A



SECTION B-B

NOTES:

1. Work this Sheet with Sheet 59.
2. See Sheet 59 for locations of Details 1 & 2.
3. Reinforcement bars designated (E) shall be Epoxy Coated.
4. For Anchor Bolt Details, see Sheet 41.
5. All edges shall have standard 20 mm chamfers except as noted.
6. Min. Lap for Bar #15=640 mm, #20=790 mm, #25=1.32 m.
7. All dimensions are in millimeters (mm) except as noted.
8. See sht. 59 for drainage pipe layout.

PIER 4 RECONSTRUCTION DETAILS			
Date	Designed	EV	WESTBOUND F.A.I. ROUTE 74 OVER CAMP STREET, FARM CREEK, AND TP&W RR F.A.I. RTE. 74 SECTION (90-13HVB)BY TAZEWELL COUNTY STATION 153+625.193 STRUCTURE NO. 090-0009
Revisions	Drawn	EV	
	Checked	NPP	
	Approved	NPP	
Prepared By: BRW, Inc. A Division of URS		1701 Golf Rd., Suite 1000 Rolling Meadows, IL.	
			Sheet No. 60 of 68 BRW Job No. 17049-071